

**SKI CLASSICS WORLD
CHAMPIONSHIP XVIII
RULES AND REGULATIONS
ATHLETES & PRO TEAMS**



V 18.0

CONTENT

SEASON XVIII MAP	03
COMPETITIONS	04
AWARDS	05
UPDATES IN ATHLETE AND PRO TEAM RULES	06
ATHLETES AND PRO TEAM RULES SEASON XVIII	07
APPENDIX 1 SEASON XVIII 2026/2027 CALENDAR.....	13
APPENDIX 2 POINTS TABLES	14
APPENDIX 3 SPRINT DIAGRAM	16
APPENDIX 4 PRIZE MONEY DISTRIBUTION.....	17
APPENDIX 5 FLOWER CEREMONY RUNNING ORDER	18
APPENDIX 6 PRO TEAM LICENSE APPLICATION	19
APPENDIX 7 SKI CLASSICS ATHLETE DECLARATION	20
APPENDIX 8 BIB COLORS	21
APPENDIX 9 EVENT CONTACTS.....	22
APPENDIX 10 EVENT PRIZE MONEY.....	23
APPENDIX 11 FINANCIAL DETAILS.....	24
APPENDIX 12 QCI.....	25

SEASON XVIII MAP

SKI CLASSICS 2026/2027

SEASON XVIII



COMPETITIONS



CHAMPION BIB

The yellow Champion bib is worn by the male and female athlete with the most current Champion points before each event. The overall winner is the athlete with most Champion points after the season in each gender. This athlete shall be declared Ski Classics World Champion. Most points collected from a single Ski Classics Challengers event are included.



SPRINT BIB

The green Sprint bib is worn by the male and female athlete with the most current Sprint points before each event. There are 0-2 sprints in the events. The seven fastest men and seven fastest women split times at the sprints will get points. The overall winner is the athlete with most sprint points after the season in each gender.



CLIMB BIB

The squared patterned "Lumberjack" Climb bib is worn by the male and female athlete with the most current Climb points before each event. There are 0-2 Climb checkpoints in the events. The seven fastest men and seven fastest women split times at the climb checkpoint will get points. The overall winner is the athlete with most Climb points after the season in each gender.



YOUTH BIB

The pink Youth bib is worn by the best male and female athlete of age 26 or below. The age of the athlete is determined by the year when the Ski Classics final of the season takes place. Points in the Champion competition are used. The overall winner is the athlete with most points after the season in each gender. Most points collected from a single Ski Classics Challengers event are included.



CUB BIB

The Cub bib is worn by the best athlete of age 23 or below, regardless the gender. The age of the athlete is determined by the year when the Ski Classics final of the season takes place. Points in the Champion competition are used.



VET BIB

The Vet bib is worn by the best athlete of age 40 or older, regardless the gender. The age of the athlete is determined by the year when the Ski Classics final of the season takes place. Points in the Champion competition are used.



GRAND CLASSICS

The Grand Classics events are Marcialonga, Jizerská 50, Vasaloppet and Birkebeinerrennet. The athlete that wins all four events in one season completes a Grand Slam.



PRO TEAM COMPETITION

The Pro Team competition is determined by the total amount of Pro Team points. Pro Team points are distributed at each Ski Classics World Championship event based on; the Pro Team's collected Champion points from the Pro Team's best two male athletes and best two female athletes, the total Sprint and Climb points collected by the team, 50% Champion points of the best Youth athlete in the team and the 50% Champion points of the best athlete from an emerging country (QCI). If **Premium Sprint points** are distributed at events, those points are added on top of the Pro Team points of the day.

AWARDS



SKIER OF THE DAY

During each event (except PTT), Ski Classics app users vote for the Skier of the Day, one male and one female who showed the most outstanding effort during the race. The awards are presented at the flower ceremony.



SKI CLASSICS RANKING

SC Ranking points are handed out in all Ski Classics events. Ranking points are based on the race time difference between a skier and the winner in their gender. The 12 best event ranking points during last 24 months are counted.



SKI CLASSICS HALL OF FAME

Ski Classics Hall of Fame consists of Ski Classics Legends, Pro Team Directors of the Season and other staff elected by Ski Classics.



EVENT OF THE SEASON

At the end of the season, Pro Team athletes, staff and Ski Classics officials vote for the Event of the season.



SKI CLASSICS LEGENDS

In order to become a Legend, a skier needs to win 5 individual Ski Classics World Championship events or more. Wins in events that have been part of Ski Classics before the World Championship was created count for athletes that have been taking part in Ski Classics.



PRO TEAM DIRECTOR OF THE SEASON

The award will be selected by Ski Classics and handed out to the Pro Team Director who has contributed to the development of the sport and the interest for Ski Classics. Award will be handed out at the Ski Classics season ceremony.

UPDATES IN ATHLETE AND PRO TEAM RULES

UPDATES SEASON XVIII

PRO TEAMS

A Pro Team set up:

- minimum 3 athletes of each gender
- minimum 6 and maximum 15 athletes
- above 24 years: maximum 8 athletes from established nations with maximum 6 of the same gender. *See Appendix 12.*
- Cub athletes: 5 reserved spots. *See point 58.*
- 2 bonus athletes can be registered from February 15th (included in the 15 athletes). *See point 8.*

Pro Teams registration is open from August 15th to September 15th 2026.

ATHLETES

Athletes must be registered as a member of an official Ski Classics Pro Team latest 24 hours before an event and have a valid FIS-license in order to compete for Ski Classics points and Ski Classics prize money.

EVENT REGISTRATIONS

Pro Teams are allowed to make name changes until 24 hours before start. Athlete name changes must be of the same gender.

POINTS

An athlete must finish the race in order to receive points in the Ski Classics Competition. If an athlete does not finish or is disqualified, the athlete will not receive any competition points. The next ranked athlete will be promoted accordingly in the classification.

Official Pro Team race suits must be sent to and approved by Ski Classics latest September 30th.

EVENT WEEKEND

Athletes wearing Ski Classics color bibs may start in the front row of the start field. Events may let the last edition event winner start in the front row. If fewer than 7 start tracks, Cub and Vet leaders will be placed in the second row.

EQUIPMENT CONTROL

Pro Team athletes must follow equipment control rules according to FIS ICR (2026). In Ski Classics events, there will be no pole length limits.

WILD CARDS

In case of a closed Ski Classics event, Ski Classics may issue wild cards to non-Pro Team athletes, thereby granting them the right to register, in accordance with its internal eligibility criteria and decision-making framework.

START PROCEDURES & FORMAT

Prologue week

If the Prologue Weekend starts with individual events, the holders of the distinctive color bibs from the previous season must wear their respective bibs until points are handed out for the season.

In the Vet competition, until points are handed out for the season, the Vet bib is worn by the athlete with the most Champion points, regardless of gender, even if these points were earned at age 39.

Mass Start

Athletes from different gender categories shall not interfere with each other during the race. If an athlete is overtaken by an athlete from another gender category, they must yield immediately and ensure a minimum separation of 20 metres is maintained.

Sprint event

In all sprint events, Champion and Sprint Competition points are distributed at the finish line.

Tour

A Tour within Ski Classics is a sequence of events in a specific time period and in the same area.

The winner is the athlete with the highest total of Championship Points collected across all Tour events. In case of a tie, the World Championship tiebreaker rules shall apply. *See point 17.*

Prize money is awarded at the end of the Tour; no prize money will be awarded for separate events.

POINTS TABLES

Updated.

ATHLETE DECLARATION

Updated.

ATHLETES AND PRO TEAM RULES SEASON XVIII

GENERAL

1. Ski Classics World Championship season XVIII is defined as March 30th 2026 until April 4th 2027. Ski Classics Challenger events taking place during the last week of this season count to the upcoming season.

2. Ski Classics Rules and Regulations are valid on top of the FIS rules (ICR). Athletes must act in accordance to FIS (ICR) and Ski Classics rules and regulations.

- a** Ski Classics is responsible for and has the right to amend the Ski Classics rules and regulations at any time.
- b** Ski Classics has the right to act upon violations of the rules.
- c** Ski Classics representative is part of the Competition Jury.
- d** Ski Classics Pro events are held in classic technique, all classic sub-techniques to be clear; double poling, double poling with kick, diagonal, herringbone and downhill position, are allowed at all parts of the event courses.
- e** In case of a Force Majeure incident Ski Classics has the sole right to; decide the outcome of the Ski Classics competitions, points and prize distribution; to rearrange result lists; to reestablish ongoing order of athletes during an event; pause and restart an event; or take other actions necessary.

PRO TEAMS

3. A Pro Team must have a specified owner. The owner can be a juridical- or physical person. The nationality of the Pro Team owner determines the nationality of the Pro Team.

If change of ownership of the Pro Team, information about the new owner must be e-mailed to racedirector@skiclassics.com and be approved by Ski Classics.

- a** A Pro Team set up:
 - minimum 3 athletes of each gender
 - minimum 6 and maximum 15 athletes
 - above 24 years: maximum 8 athletes from established nations with maximum 6 of the same gender. See Appendix 12.
 - Cub athletes: 5 reserved spots. See point 58.
 - 2 bonus athletes can be registered from February 15th (included in the 15 athletes). See point 8.
- b** An athlete shall be considered a member of a Pro Team until October 1st. From May 1st, any request for an earlier Pro Team change must be submitted to racedirector@skiclassics.com.
- c** The Pro Team name must also include the word "Team".
- d** The owner of the Pro Team may request a change of the name of the Pro Team by emailing to racedirector@skiclassics.com. Name change must be confirmed by Ski Classics to be valid.
- e** Pro Teams registration is open from August 15th to September 15th 2026.
- f** Ski Classics will invoice the Pro Team License fee after the registration has been completed. The fee is EUR 2500 + VAT for registration made until September 15th 2026 included. Ski Classics may approve late Pro Team registrations after September 15th 2026. The late registration fee is EUR 3500 + VAT. Pro Team License fee is not refundable and must be paid before the Pro Team may collect points in a Ski Classics event.

PRO TEAM LICENSE

4. To be part of Ski Classics and to get points in the Pro Team competitions, the Pro Teams must hold a Pro Team License. The Pro Team License gives the right to register a Pro Team for the Pro Team competition.

- a** To apply for a Pro Team License, a presentation of the Pro Team including the information specified in [Appendix 6](#) shall be sent to racedirector@skiclassics.com.

- b** Previous Ski Classics season TOP 25 Pro Teams are guaranteed a Pro Team License:
 - if the wish to prolong is communicated by email to racedirector@skiclassics.com before July 1st 2026.
 - if minimum two athletes in the Pro Team from previous season remain in the Pro Team upcoming season.
- c** Pro Teams ranked 26-35 may apply for a new Pro Team License until July 1st 2026 according to [Appendix 6](#).
- d** An owner of a Pro Team with Pro Team License can change the ownership of the Pro Team and License. A change of ownership must include the existing Pro Team (name of the team) and athletes with signed agreement. The information about the new owner of the Pro Team and license must be e-mailed to racedirector@skiclassics.com and must be confirmed by Ski Classics for the change to be valid.
- e** Ski Classics has the sole right at own decision to hand out Pro Team Licenses. No Pro Team License will be granted a Pro Team with outstanding invoices from Ski Classics.
- f** Registered Pro Teams receive a unique Pro Team License ID.
- g** When a Pro Team License has been granted, the Pro Team shall be registered no later than September 15th 2026 included. By registering, the Pro Team accepts Ski Classics Rules and Regulations. Number of registered Ski Classics Pro Teams is limited to 35.
- h** Late Pro Team registrations may be accepted by Ski Classics.
- i** Pro Teams must register minimum three female athletes and three male athletes to minimum five events.
- j** Participation in Prologue weekend including Pro Team Presentation is mandatory for Pro Teams with a license.
- k** Pro Teams with a Pro Team License are provided with Pro Team service vests at the beginning of the season. One Pro Team Director + 9 Pro Team service vests. Service vests should be worn in service zones and other Pro Team areas.

ATHLETES

5. Athletes must be registered as a member of an official Ski Classics Pro Team latest 24 hours before an event and have a valid FIS-license in order to compete for Ski Classics points and Ski Classics prize money.

6. Pro Teams may unregister an athlete from its roster no later than December 1st. Deregistration is subject to the athlete's explicit consent. The athlete is not eligible to register with another Pro Team for the remainder of the current Ski Classics World Championship season. Both the Pro Team Director and the affected athlete must provide written notification of the deregistration and the athlete's consent to racedirector@skiclassics.com.

7. Athletes are guaranteed start entries in each event if the following criteria are fulfilled:

- a** The athlete is registered in a Pro Team.
- b** The athlete has an active FIS license.
- c** The athlete is registered to each event through Ski Classics latest September 15th 2026 included. Athletes registered after September 15th 2026 will not be guaranteed a start place.
- d** An athlete will start in the elite group if the athlete has a Ski Classics ranking that ensures a spot in the elite group.

BONUS ATHLETES

8. From February 15th 2027 Pro Teams are allowed to register one male and one female athlete extra for the current Ski Classics World Championship season. These athletes may be from established or emerging QCI countries.

ATHLETES AND PRO TEAM RULES SEASON XVIII

EVENT REGISTRATIONS

- 9.** When registered to events through Ski Classics, athletes accept each event's participation rules.
- a** Registration of athletes to Ski Classics events are done when registering a Pro Team at www.skiclassics.com.
 - b** 2026/2027 the registration fee is Euro 70 + VAT per athlete and event. Pro Team tempo registration fee is EUR 150 + VAT per Pro Team.
 - c** Ski Classics will invoice the total registration fee of event registrations made through Ski Classics.
 - d** Event registrations made through Ski Classics can only be transferred to Pro Team athletes within the same Pro Team. In case of cancellation of an event due to Force Majeure, registration fees are non-refundable. If a replacement event is organized, then the Pro Team registrations are automatically transferred to the substituting event. Pro Team Tempo is a non refundable event.
 - e** Registrations after September 15th 2026 are made directly to each event according to each event's own rules, no start place is guaranteed and late registration fees may be different than in point b above.
 - f** Pro Teams are allowed to make name changes until 24 hours before start. Athlete name changes must be of the same gender.

ATHLETE DECLARATION & AGREEMENT

- 10.** Pro Team athletes must sign the Ski Classics Athlete Declaration in [Appendix 7](#).
- a** The athlete declarations must be scanned and emailed to racedirector@skiclassics.com to be registered in Ski Classics.
 - b** The Pro Teams must have a signed athlete agreement with their registered athletes including that they accept the rules of Ski Classics and the athlete declaration in [Appendix 7](#). The athlete agreement must contain; Start and end date of the agreement, termination clause including what to do if an athlete or Pro Team wants to end the agreement before end date. Antidoping clause including what happens if the athlete gets convicted breaking the antidoping rules. Emergency contact name and phone number outside the Pro Team.
- 11.** Ski Classics recommend Pro Teams to have a documented plan to handle crisis.

POINTS

- 12.** Ski Classics points are awarded according to the points table in [Appendix 2](#).
- a** Ski Classics World Championship events may be categorized as a 100p, 300p or 500p event, where the number indicates the amount of Ski Classics points to winning athletes and which points table is applicable at the event.
 - b** All registered Pro Team athletes finishing a Ski Classics World Championship event receive minimum one point in the Champion competition.
- 13.** Ski Classics may retain collected Ski Classics points if any violations of the rules occur. Protests and technical violation claims must be handed in to Ski Classics within 60 minutes after the winner finishes the event by handing over a written protest to the Jury room. Protests are handled according to FIS ICR-rules. All results are final one hour after the event winner has finished and the Jury has checked protests. Exception will be made for doping violation cases.

14. An athlete must finish the race in order to receive points in the Ski Classics Competition. If an athlete does not finish or is disqualified, the athlete will not receive any competition points. The next ranked athlete will be promoted accordingly in the classification.

15. Pro Team athletes must compete in the official registered Pro Team race suit design in order to collect points. Official Pro Team race suits must be sent to and approved by Ski Classics latest September 30th. Race suits must comply with the FIS 2.4, Specifications for commercial markings on equipment. Design and logos on hats may differ between athletes within a Pro Team. Non-Pro Team athletes starting in Pro Team elite group may not compete in the Pro Team official race suit.

16. In the event of a dead-heat between two athletes the points for the places will be added together and divided by two (e.g. in a dead-heat for 1st and 2nd places, both athletes will receive $(500+440)/2 = 470$ points or $(300+260)/2 = 280$ points).

- 17.** If two or more athletes or Pro Teams score the same number of points after the last/final event in any competitions, the leader/winner is the athlete who has:
- a** The best results (i.e. most 1st, most 2nd and most 3rd places etc.) in the specific competition.
 - b** If still equal in Climb or Sprint bib competitions, the final ranking in the Champion bib competition will be decisive.

If the athletes are still equal, two (or more) winners will be awarded. The prize money for the places will be added together and divided (e.g. in a dead-heat for 1st and 2nd places, both athletes will receive the prize money of the 1st and 2nd place divided in 2).

18. All Pro Team athletes may calculate the single best result from a Ski Classics Challengers event per season in the Champion and Youth bib competition. Challengers event points are handed out according to [Appendix 2](#).

SIDE EVENTS

- 19.** All Ski Classics athletes shall be available for the media. Points may be retained from the Pro Team if athletes are not available for:
- a** Short comments for media on event day, prior to start.
 - b** Pro Team athletes and Pro Team Director must be present at press conference / pre and post race interviews / bib hand-outs if they are invited. Ski Classics has the right to withdraw 50 Champion points if an invited athlete doesn't show up on time.
 - c** Questions from media immediately after finish and after the flower ceremony.
 - d** Top 3 finishing men and women + bib holders must be present in Pro Team Area until flower ceremony is completed.
 - e** If there is a Pro Team presentation before an event, the Pro Team Director and athletes must be present.

EVENT WEEKEND

- 20.** Each Pro Team participating in a Ski Classics event shall have a representative present at the event's Team Captains Meeting (TCM) on the day prior to the race. The meeting is held at 16:30 local time unless otherwise stated from the race organizer.
- a** Pro Teams must collect bibs 13.00-14.00 local time race day -1 in Ski Classics truck or other informed location.

ATHLETES AND PRO TEAM RULES SEASON XVIII

b If a double event weekend, information for second event bib handout time will be given during TCM day before first event.

21. For Ski Classics athletes it is mandatory to wear provided color bibs and GPS devices if selected. GPS devices must be handed back to organiser or Ski Classics truck immediately after the race.

22. If a color bib leader doesn't start at an event or leads more than one bib, the highest ranked (1. Champion, 2. Sprint, 3. Climb, 4. Youth, 5. Cub, 6. Vet) available athlete in each bib competition shall wear the bib. If an athlete is leading one bib competition he or she shall wear that bib regardless of the bib ranking, except for the champion bib.

23. Athletes wearing Ski Classics color bibs may start in the front row of the start field. Events may let the last edition event winner start in the front row. If fewer than 7 start tracks, Cub and Vet leaders will be placed in the second row.

EQUIPMENT CONTROL

24. Pro Team athletes must follow equipment control rules according to FIS ICR (2026). In Ski Classics events, there will be no pole length limits.

WILD CARDS

25. During Ski Classics World Championship events where the initial intermediate Sprint/Climb point is within a short distance from the start, the Ski Classics Race Director holds exclusive right to issue wild cards for athletes at the top of current Sprint/Climb competition standings and previous season total Sprint/Climb competition.

The wild card guarantees a better starting position compared to the athletes' Ski Classics ranking for the specific event.

Wild card requests must be announced by Pro Team Directors by email to Ski Classics Race Director latest 24 hours prior TCM of each event.

The Ski Classics Race Director has the exclusive right to issue wild cards for athletes anticipated to surpass their current Ski Classics ranking or without a Ski Classics ranking.

26. In case of a closed Ski Classics event, Ski Classics may issue wild cards to non-Pro Team athletes, thereby granting them the right to register, in accordance with its internal eligibility criteria and decision-making framework.

START AND FINISH AREA

27. Only competing athletes are allowed in the start and finish areas.

SERVICE ZONES

28. If service zones are assigned at an event, following rules apply:

- a** Athletes may only receive service of drinkbelts and/or feeding (drinks, gels, bars etc.) in assigned service zones. Athletes may throw drinkbelts to staff outside of service zones.
- b** Replacement service for broken ski equipment is allowed in and outside of service zones.
- c** Trash shall only be thrown within service zones and in dedicated waste zones.
- d** Pro Team staff may only stand on each side of the race track, not in between skiers in the tracks.
- e** Pro Team Service Vests should be worn in service zones and other Pro Team areas.

f Violation of these rules may lead to monetary fines.

COLD WEATHER PRECAUTIONS

29. Pro Team athletes must follow cold weather precautions according to FIS ICR (2026):

Rule 388.1, rule 388.2 and rule 388.3.

30. If an event is held under 388.2.1 conditions, the jury may decide on precautions such as allowing athletes to wear isolation clothing covering the race bib. Precautions shall if possible be communicated latest at TCM.

a Heating soles, socks, and gloves are allowed in all conditions.

GAMBLING ON COMPETITIONS

31. Pro Team athletes must follow gambling on competitions rules according to FIS ICR (2026):

SKI CLASSICS CHALLENGERS

32. Ski Classics Challengers are categorized as either Challengers or Super Challengers. Ski Classics Challengers events are presented at www.skiclassics.com. The list of Challengers events will be updated continuously through the season.

- a** Challengers events are held in cross country or roller skiing, in classic or free technique.
- b** Registrations to Challengers events are made directly to the event.
- c** Challengers event organization is responsible for distribution of prize money.
- d** Ski Classics Challengers points are distributed according to [Appendix 2](#).
- e** Ski Classics Pro Team athletes will count their single best Ski Classics Challenger result, (to be clear; single best Challenger or Super Challenger points), in the Champion and Youth competitions.

SC RANKING

33. The SC Ranking is the international ranking system for long distance skiing including athletes of both genders and any level of performance.

- a** At each Ski Classics World Championship and Challengers event, SC Ranking points are distributed to all participants based on the percentual time a participant is behind the winning time in respective gender.
- b** The winner of each gender at Ski Classics World Championship event receives 2.000.000 points and at Challenger events 500.000 points.
- c** On top of point 33b, at Ski Classics World Championship events the winner receives 200.000 bonus points, 2nd placed 100.000 bonus points and 3rd placed 40.000 bonus points.
- d** SC Ranking ranks athletes on their 12 best event points the latest 24 months. SC Ranking is updated every Monday.

START PROCEDURES & FORMATS

34. Prologue week

If the Prologue Weekend starts with a Pro Team Tempo, the holders of the distinctive color bibs from the previous season must wear their respective bibs during the Pro Team Tempo and must retain them for the subsequent event.

If the Prologue Weekend starts with individual events, the holders of the distinctive color bibs from the previous season must wear their respective bibs until points are handed out for the season. In the Vet competition, until points are handed out for the season, the Vet bib is worn by the athlete with the most Champion points, regardless of gender, even if these points were earned at age 39.

ATHLETES AND PRO TEAM RULES SEASON XVIII

35. Pro Team Tempo (PTT)

- a The Pro Team Tempo is organized as an interval start competition with block starts, one Pro Team starting at a time in reversed order according to the Pro Team ranking of previous season with the top 5 ranked teams spread out in the starting field. The gap between the blocks are 4 minutes. Male Pro Team athletes start 30 seconds ahead of female Pro Team athletes.
- b Bib numbers shall be assigned sequentially according to each athlete's ranking, from highest to lowest, within their respective gender category (e.g., 1₁, 1₂, 1₃, 1₄ and so forth).
- c Male Pro Team athletes who are caught up by female Pro Team athletes must leave a gap to the females and stay minimum 20 meters behind.
- d Pro Teams must ease for passing Pro Teams and not interfere with the passing Pro Teams chosen racing line.
- e The finishing time of the 2nd ranked male and 2nd ranked female of the team will count for the classification. The total time decides the result of the Pro Team Tempo. The Pro Team Tempo points are handed out according to points table, [Appendix 2](#), to champion bib and Pro Team Tempo competition.
- f In the Pro Team Tempo, minimum 2 athletes per gender per team must start in order for the Pro Team to receive Pro Team points.
- g Pro Teams that have less than two male and two female athletes on the start may start separately from the Pro Team start procedure.

36. Individual Time Trial (ITT)

Separated Women and Men Individual with recommended 20-60 seconds interval start. Ski Classics has the right to make the seeding for Pro Team athletes.

During ITT events, competitors must stay in the classic track except moments of overpassing or unavoidable situations such as loss of balance etc. Violation of this rule should lead to a 5 minute time penalty sanction. Depending on weather situation, the jury has the right to not apply the rule.

37. Mass Start

Separated Women and Men Competition mass start with seeding according to the current SC ranking and wild cards. Athletes from different gender categories shall not interfere with each other during the race. If an athlete is overtaken by an athlete from another gender category, they must yield immediately and ensure a minimum separation of 20 metres is maintained.

38. Sprint event

In all sprint events, Champion and Sprint Competition points are distributed at the finish line.

In Heat Sprint event, qualification start procedure is the same as for an ITT. Fastest 14 athletes from the qualification continue to the semi finals (two semi finals with 7 athletes each). Fastest 3 athletes from each semi final and 1 lucky loser continue to the final. [Appendix 3](#).

39. Premium sprint

Premium sprint rewards regular sprint points in the individual sprint bib competition. In addition, the same points are added on top of the regular team competition points, i.e. on top of 200 points for the winning Pro Team. [Appendix 2](#).

40. Iconic Climb

Iconic Climbs are the most challenging and prestigious ascents of the season, and carry a higher points value accordingly.

[Appendix 2](#).

41. Kilometer Zero

Gliding start from fixed start positions. Athletes must remain their position in the start field until the leading skidoo gives the start signal.

42. Leading Pro Team

Athletes from the leading Pro Team in the Pro Team competition shall be seeded in the row immediately behind the color bib athletes, start position decision chart will be applied.

43. Tour

A Tour within Ski Classics is a sequence of events in a specific time period and in the same area.

The winner is the athlete with the highest total of Championship Points collected across all Tour events. In case of a tie, the World Championship tiebreaker rules shall apply. See *point 17*.

Prize money is awarded at the end of the Tour; no prize money will be awarded for separate events.

PRIZE MONEY

44. Ski Classics athletes must participate in the flower ceremony and prize giving ceremony of the event (if arranged) in order to receive event prize money. Ski Classics recommends the organizing committee a minimum prize money fund of EUR 22.000+VAT for single-event weekends, EUR 33.000+VAT for double-event weekends and EUR 33.000+VAT for Grand Classics events.

45. Event prize money is distributed by each event and Pro Teams shall follow the instructions given by each event organization. Prize money amounts in [Appendix 10](#) and invoice information in [Appendix 11](#). Invoices shall be sent latest April 30th, 2027.

46. Ski Classics Pro Teams and athletes must participate in the prize ceremony at the Ski Classics Final in order to receive overall season prize money. If an athlete cannot participate in the Ski Classics Final due to illness and/or reasons beyond the athlete's control, the athlete must submit documentation stating clearly the reasons for not attending. The document must be certified by a medical doctor and submitted to Ski Classics in order for the athlete's points to be valid for the overall results. Overall prize money is distributed according to [Appendix 4](#).

47. Overall season prize money must be invoiced Ski Classics latest April 30th, 2027.

- a Invoices shall be sent by a registered company, owned either by Pro Team or individual Pro Team athlete. The company must be registered in the home country of the Pro Team or Pro Team athlete and shall apply and follow the rules and regulations regarding tax and VAT of this country.
- b Prize money shall be invoiced in EUR without VAT applied.
- c Invoices shall include the following information:
 - Company name
 - Invoice date
 - Invoice number
 - Due date with payment terms of 30 days
 - Amount of prize money (EUR)
 - IBAN number of the bank account
 - BIC number of the bank account
 - Registration/VAT number of the company

AND

- If the company is registered in an EU country the following text must be written on the invoice “Reverse charge on VAT”.

OR

- If the company is registered in a non-EU country the following text must be written on the invoice “Article 44 VAT directive”.

48. Ski Classics official Pro Teams shall have the Ski Classics Pro Team logo on their homepage, hyperlinked to www.skiclassics.com.

49. Ski Classics and the Events part of Ski Classics, may use photos and videos of registered Pro Teams and athletes in order to market Ski Classics without prior permission or remuneration.

50. Pro Teams are encouraged to share Ski Classics content in social media and other channels, and to share their own content and news with Ski Classics by email to: press@skiclassics.com.

51. Pro Teams are allowed to use up to 30 seconds from the event highlight created by Ski Classics, for their own social media usage.

52. Ski Classics Pro Teams are allowed to use Ski Classics Official Pro Team logo for their own marketing purposes.

SKI CLASSICS PRO COMPETITIONS

53. Yellow Competition

The yellow Champion bib is worn by the male and female athlete with the most current Champion points before each event. The overall winner is the athlete with most Champion points after the season in each gender. This athlete shall be declared Ski Classics World Champion. Most points collected from a single Ski Classics Challengers event are included.

54. Sprint Competition

The green Sprint bib is worn by the male and female athlete with the most current Sprint points before each event. There are 0-2 sprints in the events. The seven fastest men and seven fastest women split times at the sprints will get points. The overall winner is the athlete with most sprint points after the season in each gender.

55. Climb Competition

The squared patterned “Lumberjack” Climb bib is worn by the male and female athlete with the most current Climb points before each event. There are 0-2 Climb checkpoints in the events. The seven fastest men and seven fastest women split times at the climb checkpoint will get points. The overall winner is the athlete with most Climb points after the season in each gender.

56. Youth Competition

The pink Youth bib is worn by the best male and female athlete of age 26 or below. The age of the athlete is determined by the year when the Ski Classics final of the season takes place. Points in the Champion competition are used. The overall winner is the athlete with most points after the season in each gender. Most points collected from a single Ski Classics Challengers event are included.

57. Pro Team Competition

The Pro Team competition is determined by the total amount of Pro Team points after the season. Pro Team points are distributed according to the points table on [Appendix 2](#) at an event based on;

- a The Pro Team’s collected Champion points from the Pro Team’s best two male athletes and best two female athletes
- b The total Sprint and Climb points collected by the team
- c 50% Champion points of the best Youth athlete in the team
- d 50% Champion points of the best athlete from an emerging country (QCI)

and

If **Premium Sprint points** are distributed at events, those points are added on top of the Pro Team points of the day.

58. Cub and Vet

The Cub bib and the Vet bib are worn by the best athlete of the respective standing in the champion competition, regardless of gender.

- a The Cub category are athletes with age of 23 or below and ranging from the national lowest allowed age. Maximum 5 different Cubs in total per season and Pro Team, regardless of gender.
- b The Vet category are athletes with an age of 40 years or older.
- c The age of the athlete is determined by the year when the Ski Classics final of the season takes place.

59. Grand Classics

Ski Classics Grand Classics events for Season XVIII are Marcia-longa, Jizerská 50, Vasaloppet and Birkebeinerrennet.

60. Grand Slam

The Pro Team athlete who wins all four Grand Classics events in one season completes a Grand Slam. The Grand Slam net prize money fund specified in [Appendix 4](#), will be distributed according to following conditions:

- a One male Pro Team athlete and/or one female Pro Team athlete wins all four Grand Classics events in one season.
- b All wins have been achieved according to good sportsmanship. Ski Classics reserves the right to withhold the prize money fund in full or partly, if suspected or proven misconduct by the winning athlete, Pro Team other athletes or Pro Teams (e.g. co-athletes of same Pro Team intentionally lose an event).
- c If two Pro Team athletes complete the Grand Slam in one season, the prize money fund will be divided equally between the two athletes.
- d If one or more Grand Classics events are moved to other venues, replaced or in any way modified from the original race track it will not be categorized as a Grand Classics event, and hence, the Grand Classics prize money fund will not be distributed.

61. Ski Classics Hall of Fame

Ski Classics Hall of Fame consists of Ski Classics Legends, Pro Team Directors of the Season and other staff elected by Ski Classics.

62. Event of the Season

At the end of the season Pro Team athletes, staff and Ski Classics officials vote for the Event of the season.

63. Ski Classics Legend

In order to become a Legend, a skier needs to win 5 individual Ski Classics World Championship events or more. Wins in events that have been part of Ski Classics before the World Championship was created count for athletes that have been taking part in Ski Classics.

64. Pro Team Director of the Season

The award will be selected by Ski Classics and handed out to the Pro Team Director who has contributed to the development of the sport and the interest for Ski Classics. Awards will be handed out at the Ski Classics season ceremony.

65. Skier of the Day

During each event (except PTT), the Skier of the Day will be voted for by users of the Ski Classics app. The award recognizes skiers who make a significant effort during the race, not necessarily the winners, but those who stand out as the most outstanding performers. One male and one female skier will be selected for each race, and the awards will be presented during the flower ceremony after the event.

Preliminary start times, sprint and climb points.

Event 1 - Bad Gastein Prologue

Bad Gastein, Austria
Friday December 11th 2026
1 km
Start times:
Women: 16:10 CET
Men: 16:45 CET
Pro Event 100p

Event 2 - Sportgastein Criterium

Bad Gastein, Austria
Sunday December 13th 2026
30 km
Start times:
Women: 10:30 CET
Men: 09:30 CET
Pro Event 300p
Sprint
Goldbergbahn Climb*

Event 3 - Bad Gastein ITT

Bad Gastein, Austria
Saturday December 19th 2026
7km
Start times:
Women: 10:00 CET
Men: TBD
Pro Event 300p

Event 4 - Bad Gastein Criterium

Bad Gastein, Austria
Sunday December 20th 2026
36 km
Start times:
Women: 11:10 CET
Men: 10:50 CET
Pro Event 300p
Sprint x2
Climb x 2

Event 5 - Engadin La Diagonela

Pontresina - Zuoz, Switzerland
Saturday January 16th 2027
55 km
Start times:
Women: 10:00 CET
Men: 09:55 CET
Pro Event 300p
Sprint Celerina

Event 6 - Zuoz - St. Moritz Sprint

Zuoz-Celerina, Switzerland
Sunday January 17th 2027
30 km
Start times:
Women: 10:00 CET
Men: 09:45 CET
Pro Event 300p
Sprint

Grand Classics

Event 7 - Marcialonga

Moena-Cavalese, Italy
Sunday January 31st 2027
70 km
Start times:
Women: 08:05 CET
Men: 08:00 CET
Pro Event 500p - GRAND CLASSICS
Sprint Canazei
Sprint Predazzo
Iconic Climb Cascata*

Event 8 - Bedřichov Heat Sprint

Bedřichov, Czech Republic
Friday February 12th 2027
1.5 km
Start times:
Women: 16:00 CET
Men: 16:30 CET
Pro Event 300p
Sprint

Grand Classics

Event 9 - Jizerská 50

Bedřichov, Czech Republic
Sunday February 14th 2027
50km
Start times:
Women: 08:00 CET
Men: 08:30 CET
Pro Event 500p - GRAND CLASSICS
Climb Na Kneipe
Climb Smědava

Event 10 - Oxberg - Mora Sprint Women

Mora, Sweden
Saturday February 27th 2027
30 km
Start times:
Women: 09:00 CET
Pro Event 300p
Sprint

Event 11 - Oxberg - Mora Sprint Men

Mora, Sweden
Sunday February 28th 2027
30 km
Start times:
Men: 08:30 CET
Pro Event 300p
Sprint

Grand Classics

Event 12 - Vasaloppet

Sälen - Mora, Sweden
Sunday March 7th 2027
90 km
Start times:
Women: 08:00 CET
Men: 08:00 CET
Pro Event 500p - GRAND CLASSICS
Climb Högsta Punkten
Sprint Smågan
Sprint Evertsberg

Grand Classics

Event 13 - Birkebeinerrennet

Rena - Lillehammer, Norway
Saturday March 20th 2027
53 km
Start times:
Women: 08:00 CET
Men: 07:45 CET
Pro Event 500p - GRAND CLASSICS
Iconic Climb Raudfjellet
Climb Midtfjellet

Event 14 - Reistadløpet

Setermoen - Bardufoss, Norway
Saturday April 3rd 2027
35 km
Start times:
Women: 10:00 CET
Men: 11:00 CET
Pro Event 300p
Premium Sprint Storløyemyra
Iconic Climb Orta

Event 15 - Grand Finale Summit 2 Senja

Bardufoss - Finnsnes, Norway
Sunday April 4th 2027
60 km
Start times:
Women: 09:05 CET
Men: 09:00 CET
Pro Event 300p
Premium Sprint Johannesmyra
Iconic Climb Magdaskaret

*Best time in Climb segment

APPENDIX 2 • POINTS TABLES 1/2

CHAMPION BIB INDIVIDUAL POINTS TABLES

PRO EVENT 500 GRAND CLASSICS	
CHAMPION	
POSITION	POINTS
#1	500
#2	440
#3	400
#4	370
#5	340
#6	310
#7	290
#8	270
#9	250
#10	230
#11	210
#12	190
#13	170
#14	165
#15	160
#16	155
#17	150
#18	145
#19	140
#20	137
#21	134
#22	131
#23	128
#24	125
#25	122
#26	119
#27	116
#28	113
#29	110
#30	107
#31	104
#32	101
#33	98
#34	95
#35	92
#36	89
#37	86
#38	84
#39	82
#40	80
#41	78
#42	76
#43	74
#44	72
#45	70
#46	68
#47	66
#48	64
#49	62
#50	60
#51	58
#52	56
#53	54
#54	52
#55	50
#56	48
#57	46
#58	44
#59	42
#60	40
#61	38
#62	36
#63	34
#64	32
#65	30
#66	28
#67	26
#68	24
#69	22
#70	20
#71	18
#72	16
#73	14
#74	12
#75	10
#76	8
#77	6
#78	4
#79	2
≥ #80	1

PRO EVENT 300	
CHAMPION	
POSITION	POINTS
# 1	300
# 2	260
# 3	230
# 4	200
# 5	180
# 6	175
# 7	170
# 8	165
# 9	160
# 10	155
# 11	152
# 12	149
# 13	146
# 14	143
# 15	140
# 16	137
# 17	134
# 18	131
# 19	128
# 20	125
# 21	122
# 22	119
# 23	116
# 24	113
# 25	110
# 26	107
# 27	104
# 28	101
# 29	98
# 30	95
# 31	92
# 32	89
# 33	86
# 34	83
# 35	80
# 36	77
# 37	74
# 38	71
# 39	68
# 40	65
# 41	62
# 42	59
# 43	56
# 44	53
# 45	50
# 46	47
# 47	44
# 48	41
# 49	38
# 50	35
# 51	33
# 52	31
# 53	29
# 54	27
# 55	26
# 56	25
# 57	24
# 58	23
# 59	22
# 60	21
# 61	20
# 62	19
# 63	18
# 64	17
# 65	16
# 66	15
# 67	14
# 68	13
# 69	12
# 70	11
# 71	10
# 72	9
# 73	8
# 74	7
# 75	6
# 76	5
# 77	4
# 78	3
# 79	2
≥ # 80	1

PRO EVENT 100	
CHAMPION	
POSITION	POINTS
# 1	100
# 2	90
# 3	85
# 4	80
# 5	76
# 6	73
# 7	70
# 8	64
# 9	62
# 10	60
# 11	58
# 12	56
# 13	54
# 14	52
≥ # 15	50

PTT POINTS	
CHAMPION	
PRO TEAM POSITION	POINTS
# 1	100
# 2	90
# 3	85
# 4	80
# 5	75
# 6	70
# 7	65
# 8	60
# 9	55
≥ # 10	50

APPENDIX 2 • POINTS TABLES 2/2

SPRINT BIB POINTS TABLE

SPRINT POINTS	
MEN	
POSITION	SPRINT
#1	30 p
#2	23 p
#3	16 p
#4	12 p
#5	9 p
#6	6 p
#7	4 p
WOMEN	
#1	30 p
#2	23 p
#3	16 p
#4	12 p
#5	9 p
#6	6 p
#7	4 p

CLIMB BIB POINTS TABLE

CLIMB POINTS		
MEN		
POSITION	ICONIC	CLIMB
#1	45 p	30 p
#2	35 p	23 p
#3	24 p	16 p
#4	18 p	12 p
#5	13 p	9 p
#6	9 p	6 p
#7	6 p	4 p
WOMEN		
#1	45 p	30 p
#2	35 p	23 p
#3	24 p	16 p
#4	18 p	12 p
#5	13 p	9 p
#6	9 p	6 p
#7	6 p	4 p

CHALLENGER POINTS TABLES

SUPER CHALLENGERS	
POSITION	POINTS
# 1	100
# 2	97
# 3	95
# 4	93
# 5	91
# 6	89
# 7	87
# 8	85
# 9	83
# 10	81
# 11	79
# 12	77
# 13	75
# 14	73
# 15	71
# 16	69
# 17	67
# 18	65
# 19	63
# 20	61
# 21	59
# 22	57
# 23	55
# 24	53
# 25	51
# 26	49
# 27	47
# 28	45
# 29	43
# 30	41
# 31	39
# 32	37
# 33	35
# 34	33
# 35	31
# 36	29
# 37	27
# 38	25
# 39	23
# 40	21
# 41	20
# 42	19
# 43	18
# 44	17
# 45	16
# 46	15
# 47	14
# 48	13
# 49	12
# 50	11
# 51	10
# 52	9
# 53	8
# 54	7
# 55	6
# 56	5
# 57	4
# 58	3
# 59	2
≥ # 60	1

CHALLENGERS	
POSITION	POINTS
# 1	50
# 2	49
# 3	48
# 4	47
# 5	46
# 6	45
# 7	44
# 8	43
# 9	42
# 10	41
# 11	40
# 12	39
# 13	38
# 14	37
# 15	36
# 16	35
# 17	34
# 18	33
# 19	32
# 20	31
# 21	30
# 22	29
# 23	28
# 24	27
# 25	26
# 26	25
# 27	24
# 28	23
# 29	22
# 30	21
# 31	20
# 32	19
# 33	18
# 34	17
# 35	16
# 36	15
# 37	14
# 38	13
# 39	12
# 40	11
# 41	10
# 42	9
# 43	8
# 44	7
# 45	6
# 46	5
# 47	4
# 48	3
# 49	2
≥ # 50	1

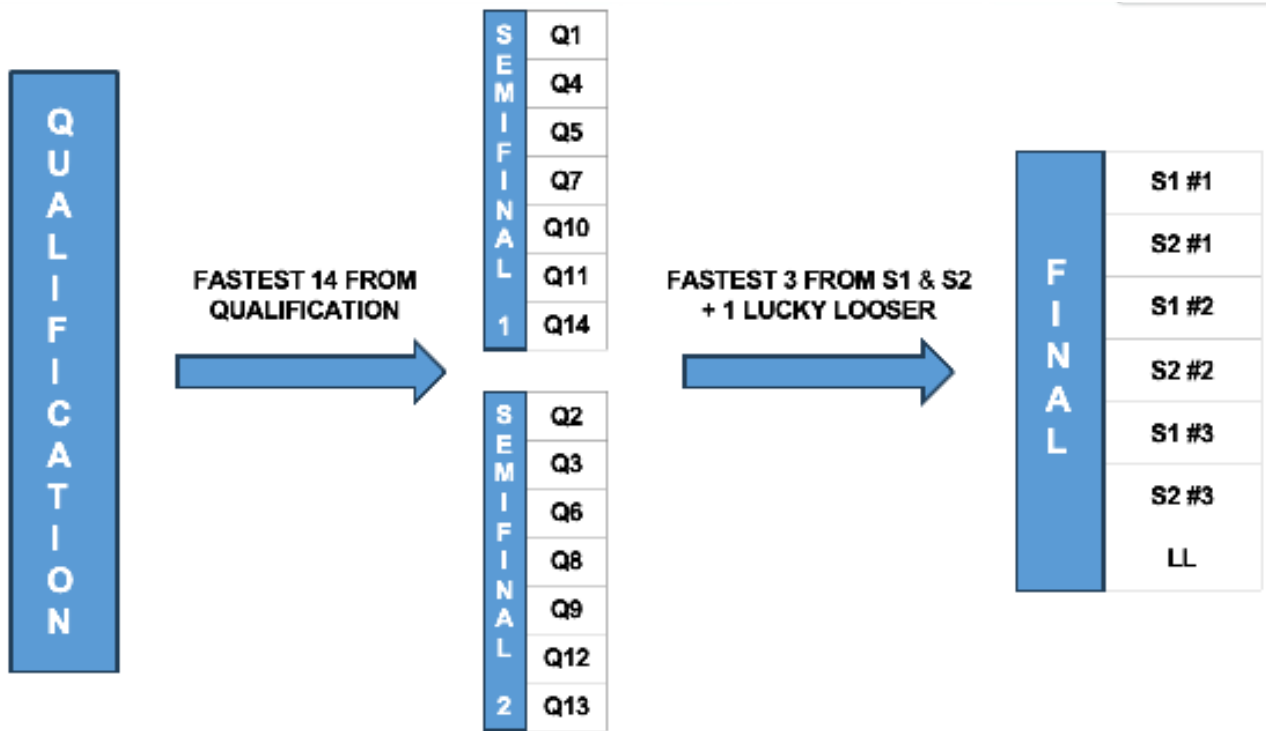
PRO TEAM POINTS TABLE

PRO TEAM COMPETITION	
POSITION	POINTS
# 1	200
# 2	180
# 3	160
# 4	140
# 5	120
# 6	100
# 7	90
# 8	85
# 9	80
# 10	75
# 11	70
# 12	65
# 13	60
# 14	55
# 15	50
# 16	45
# 17	40
# 18	35
# 19	32
# 20	30
# 21	28
# 22	26
# 23	24
# 24	22
# 25	20
# 26	18
# 27	16
# 28	14
# 29	12
# 30	10
# 31	9
# 32	8
# 33	7
# 34	6
# 35	5

PREMIUM SPRINT POINTS TABLE

SPRINT	
MEN	
POSITION	POINTS
#1	30 p
#2	23 p
#3	16 p
#4	12 p
#5	9 p
#6	6 p
#7	4 p
WOMEN	
#1	30 p
#2	23 p
#3	16 p
#4	12 p
#5	9 p
#6	6 p
#7	4 p

APPENDIX 3 • SPRINT DIAGRAM



APPENDIX 4 • PRIZE MONEY DISTRIBUTION

TOTAL PRIZE SUM: TBD



CHAMPION COMPETITION WOMEN	
POSITION	PERCENTAGE
1	13.3%
2	6.3%
3	3.7%
4	2.5%
5	1.3%



CHAMPION COMPETITION MEN	
POSITION	PERCENTAGE
1	13.3%
2	6.3%
3	3.7%
4	2.5%
5	1.3%



PRO TEAM COMPETITION	
POSITION	PERCENTAGE
1	7.5%
2	4.2%
3	3.2%
4	2.5%
5	2.0%
6	1.6%
7	1.4%



SPRINT COMPETITION WOMEN	
POSITION	PERCENTAGE
1	3.3%
2	1.1%
3	0.7%



SPRINT COMPETITION MEN	
POSITION	PERCENTAGE
1	3.3%
2	1.1%
3	0.7%



GRAND SLAM	TBD
JACKPOT CONTRIBUTION	1.0%



CLIMB COMPETITION WOMEN	
POSITION	PERCENTAGE
1	3.3%
2	1.1%
3	0.7%



CLIMB COMPETITION MEN	
POSITION	PERCENTAGE
1	3.3%
2	1.1%
3	0.7%



YOUTH COMPETITION WOMEN	
POSITION	PERCENTAGE
1	1.0%



YOUTH COMPETITION MEN	
POSITION	PERCENTAGE
1	1.0%

FLOWER CEREMONY STAGE

If possible, the stage for the flower ceremony should be located in front of both spectators and photographers and next to the Mixed Zone - close to the TV interview positions. The exact location is to be coordinated with Ski Classics.

FLOWER CEREMONY RUNNING ORDER

The Flower Ceremony takes place immediately upon the top three athletes of the last gender and the color bib holders crossing the finish line. It follows a standardized ritual by 1-2 representatives of the event and a 1-2 of Ski Classics. Ski Classics Race Director will provide the speaker with flower ceremony speaker template before the ceremony. Men and women flower ceremonies may be combined. All athletes shall gather in the designated staging area adjacent to the podium, awaiting further instruction from race officials.

1. **INTRODUCTION** with the Ski Classics anthem.
2. **SKIER OF THE DAY** (decorated by Ski Classics) woman/man + *Photo session*.
3. **PRO TEAM DIRECTOR OF THE DAY** (decorated by LOC). Pro Team collecting most Pro Team points at the event + *Photo session*.
4. **COLOR BIBS** (decorated by Ski Classics). The woman bib holder shall take the stage first, put on her bib, and remain on stage, after which the man bib holder shall complete the same procedure. The colour bibs shall be presented in the following order:
 - Pink Youth color bib woman/man + *Photo session*
 - Lumberjack Climb color bib woman/man + *Photo session*
 - Green Sprint color bib woman/man + *Photo session*
 - Yellow Champion color bib woman/man + *Photo session*
5. **TOP 3 WOMEN** (decorated by LOC)
 - The speaker shall announce top 3 athletes in reverse order (3rd, 2nd, 1st).
 - Each athlete shall take the stage upon being announced and receive flowers and prize before the procedure is repeated for the next athlete
 - The national anthem of the winner is played.
 - Applause
 - Photo session
 - Sparkling drink pop-out ("champagne shower")
 - Top 3 leave the stage.
6. **TOP 3 MEN** (decorated by LOC)
 - The speaker shall announce top 3 athletes in reverse order (3rd, 2nd, 1st).
 - Each athlete shall take the stage upon being announced and receive flowers and prize before the procedure is repeated for the next athlete
 - The national anthem of the winner is played.
 - Applause
 - Photo session
 - Sparkling drink pop-out ("champagne shower")
 - Top 3 leave the stage.
7. **END VIGNETTE** with the Ski Classics anthem.

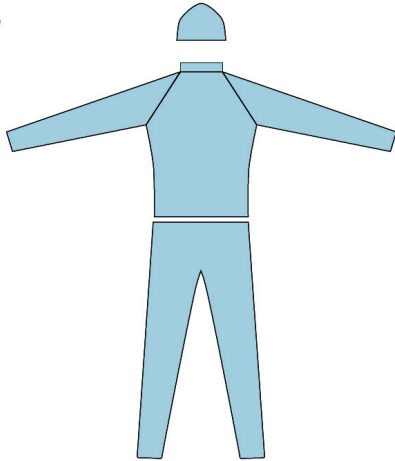
APPENDIX 6 • LICENSE APPLICATION TEMPLATE

PRO TEAM LICENSE application shall include a PowerPoint presentation describing:

- Background
- Sponsors
- Athletes
- Pro Team Director
- Purpose and goals of the team
- Nationality of Team and Athletes
- Number of events the Team plans to participate in
- Design suit including size of all logos

Pro Team Logo Template
Proportion: 5x2
in .eps format
(fill this box)

Race suit template



Digital files will be sent upon confirmed Pro Team Application

Professional athlete photos



APPENDIX 7 • SKI CLASSICS ATHLETE DECLARATION



PRO TEAM ATHLETE NAME

PRO TEAM ATHLETE FIS CODE

DATE OF BIRTH

**EMERGENCY CONTACT
NAME**

**EMERGENCY CONTACT
PHONE NUMBER**

AS A PART OF A SKI CLASSICS Pro Team, the Athlete acknowledge and recognize the importance and necessity of a clean and fair sport, including respect for the prohibition against doping and Ski Classics requirement that all Pro Team members including the Athlete are clean, free from drugs and refrain from doping. In an event of a breach of this athlete declaration, Ski Classics has the right to remove an athlete from a registered Pro Team squad.

ANTI DOPING Ski Classics requires all athletes to comply with the Anti-Doping Rules of the International Ski and Snowboard Federation (FIS), which are established in accordance with the World Anti-Doping Code. For full information on the applicable rules, refer to the FIS Anti-Doping page. The current list of prohibited substances and methods is maintained by the World Anti-Doping Agency (WADA) and is available at wada-ama.org.

WAIVERS I understand that there are inherent risks involved in my participation in Ski Classics competitions, including, but not limited to, those associated with weather or competition conditions, equipment, other participants, and spectators. I fully assume the risks associated with my participation in Ski Classics competitions or activities. To the fullest extent permitted by law, I waive any and all claims that I, my heirs or legal representatives may have against Ski Classics, the organizers of any Ski Classics competitions or activities, or any Ski Classics sponsor, or against any director, officer, employee, authorized agent or independent contractor of any of them for death or personal injury and/or any loss or damage that I incur during my participation in any Ski Classics competition or activity. I waive any claim for any costs or losses that I incur in relation to a Ski Classics competition or other activity that has to be cancelled for reasons of safety or force majeure (as determined by Ski Classics or competition organizer), including, but not limited to, travel and accommodation costs.

INSURANCE I understand and agree that I must possess both sufficient liability and accident insurance for myself covering accident, recovery, and transport costs, including for competition-related risks, to an adequate extent when participating in any Ski Classics competitions or activities.

ELIGIBILITY I understand that I will be eligible to compete in any Ski Classics competitions only once I have provided Ski Classics with properly completed and signed copy of this declaration. This declaration is valid from the date of signing until 15th of November 2027.

RIGHTS I accept that Ski Classics has all rights to free of charge use videos and photos including me, alone or in group, for their own, their partners as well as all kinds of promotions usage, for all future. I also understand and accept that by no means it is allowed to live stream video during the Ski Classics events, since these rights belong to the broadcasters of the tour.

GDPR I accept that Ski Classics may use my personal data.

DATE AND PLACE

PRO TEAM ATHLETE SIGNATURE

SIGNATURE OF LEGAL GUARDIAN IN CASE OF MINORS

APPENDIX 8 • BIB COLORS



CHAMPION BIB
Yellow PMS neon 803



SPRINT BIB
Green PMS neon 802



YOUTH BIB
Pink PMS neon 806



CLIMB BIB
Red PMS P 48-8 C
Black PMS Black C



CUB BIB



VET BIB



SKI CLASSICS LOGO
Pantone Process Cyan C

APPENDIX 9 • EVENT CONTACTS

BAD GASTEIN PROLOGUE, ITT, CRITERIUM & SPORTGAS- TEIN CRITERIUM

Race administration

Ski Classics
racedirector@skiclassics.com

Waxing facilities

Silvo Gstrein
silvo.gstrein@gastein.com +43 664 3485920

Accommodation

Birgit Gruber
birgit.gruber@gastein.com +43 664 4312866

ENGADIN LA DIAGONELA & ZUOZ - ST. MORITZ SPRINT

Race administration

Jan Bill
info@ladiagonela.ch +41 81 851 60 88

Waxing facilities

TBD

Accommodation

Madlaina Hui
madlaina.hui@engadin.ch +41 81 830 08 49

MARCIALONGA

Race administration

Davide Stoffie
davide@marcialonga.it +39 320 0933601

Waxing facilities

Barbara Vanzo
barbara@marcialonga.it +39 0462 501 110

Accommodation

Francesca Volpati
francesca@marcialonga.it +39 0462 501 110

BEDŘICHOV HEAT SPRINT & JIZERSKA 50

Race administration

elite@jjz50.cz

Waxing facilities

elite@jjz50.cz

Accommodation

jitka.svobodova@raul.cz

OXBERG - MORA SPRINT & VASALOPPET

Race administration

Cathrine Mörk
cathrine.mork@vasaloppet.se +46702546870

Waxing facilities

N/A

Accommodation

Cathrine Mörk
cathrine.mork@vasaloppet.se +46702546870

BIRKEBEINERRENNET

Race administration

Anne Lise Borgundvåg
anne.lise@birkebeiner.no +47 905 43 382

Waxing facilities

info@birkebeiner.no +47 417 72 900

Accommodation

Berit Nordseth
berit@birkebeiner.no +47 954 68 709

REISTADLØPET & GRAND FINALE SUMMIT 2 SENJA

Race administration

Silje Storaa
ceo@reistadlopet.no +47 41 75 44 20

Waxing facilities

Silje Storaa
ceo@reistadlopet.no +47 41 75 44 20

Accommodation

Silje Storaa
ceo@reistadlopet.no +47 41 75 44 20

*Preliminary event prize money - invoice details to be found in [Appendix 11](#)

BAD GASTEIN PROLOGUE, ITT, CRITERIUM & SPORTGASTEIN CRITERIUM

Invoice to Bad Gastein
WOMEN / MEN
TBC

ENGADIN LA DIAGONELA

Invoice to Engadin La Diagonela
WOMEN / MEN
1. EUR 6.000
2. EUR 3.000
3. EUR 1.500
4. EUR 1000
5. EUR 700
6. EUR 500
+ sprint prize money EUR 2.000

ZUOZ - ST. MORITZ SPRINT

Invoice to Engadin La Diagonela
WOMEN / MEN
TBC

MARCIALONGA

Invoice to Marcialonga
WOMEN / MEN
1. EUR 5.500
2. EUR 2.500
3. EUR 1.250
4. EUR 700
5. EUR 600
6. EUR 500
+ extra prize money EUR 10.900

BEDŘICHOV HEAT SPRINT

Invoice to Jizerská 50
WOMEN / MEN
1. EUR 4.000
2. EUR 1.600
3. EUR 1.000
4. EUR 600
5. EUR 500
6. EUR 300

JIZERSKÁ 50

Invoice to Jizerská 50
WOMEN / MEN
1. EUR 5.300
2. EUR 2.200
3. EUR 1.200
4. EUR 700
5. EUR 600
6. EUR 500
+ climbs prize money EUR 12.000

OXBERG - MORA SPRINT

Invoice to Vasaloppet
WOMEN / MEN
TBC

VASALOPPET

Invoice to Vasaloppet
WOMEN / MEN
1. SEK 102.000
2. SEK 50.000
3. SEK 30.000
4. SEK 20.000
5. SEK 15.000
6. SEK 10.000
7. SEK 9.000
8. SEK 8.000
9. SEK 7.000
10. SEK 6.000
11. SEK 5.000
12. SEK 4.000
13. SEK 3.000
14. SEK 2.000
15. SEK 1.000
+ sprint prize money SEK 80.000

BIRKEBEINERRENNET

Invoice to Birkebeinerrennet
WOMEN / MEN
1. NOK 75.000
2. NOK 45.000
3. NOK 23.000
4. NOK 10.000
5. NOK 6.000
6. NOK 5.000
7. NOK 4.000
8. NOK 3.000
9. NOK 2.000
10. NOK 1.000
+ extra prize money NOK 38.000

REISTADLØPET

Invoice to Reistadløpet
WOMEN / MEN
1. EUR 5.000
2. EUR 2.000
3. EUR 1.200
4. EUR 700
5. EUR 600
6. EUR 500

GRAND FINALE SUMMIT 2 SENJA

Invoice to Reistadløpet
WOMEN / MEN
1. EUR 5.000
2. EUR 2.000
3. EUR 1.200
4. EUR 700
5. EUR 600
6. EUR 500

SC LONG DISTANCE SKIING AB

INVOICE ADDRESS

SC Long Distance Skiing AB
Humlegatan 2B
263 38 Höganäs
Sweden
VAT: SE556901904401

Electronic PDF invoices shall be sent to:
invoices@skiclassics.com

POST ADDRESS

SC Long Distance Skiing AB
Humlegatan 2B
263 38 Höganäs
Sweden

BAD GASTEIN PROLOGUE, ITT, CRITERIUM & SPORTGAS- TEIN CRITERIUM

Kur- und Tourismusverband Bad Gastein
Kaiser-Franz-Josef-Straße 27
5640 Bad Gastein
Austria
VAT: ATU37782100

Electronic PDF invoices shall be sent to:
bernadette.kohlmayr@gastein.com

ENGADIN LA DIAGONELA & ZUOZ - ST. MORITZ SPRINT

Verein La Diagonela
Quadratscha 16
7503 Samedan
Switzerland
VAT: CHE498557848

Electronic PDF invoices shall be sent to:
info@ladiagonela.ch

MARCIALONGA

SCI CLUB MARCIALONGA
Località Stalimen, 4
38037 Predazzo TN
Italy
VAT: 01605290228

Electronic PDF invoices shall be sent to:
Sara Deflorian, +39 0462 501 110
sara@marcialonga.it

BEDŘICHOV HEAT SPRINT & JIZERSKA 50

Asociace Sportu Pro Radost, z.s
Privozni 1064/2A,
170 00 Praha 7 - Holesovice
Czech republic
ICO (ID number): 05580421

Electronic PDF invoices shall be sent to:
elite@jiz50.cz

OXBERG - MORA SPRINT & VASALOPPET

Vasaloppsföreningen Sälen-Mora
EANMOT: 7368844015882
Box 171
831 22 Östersund
Sweden
Mark the invoice " Cathrine Mörk"

Electronic PDF invoices shall be sent to:
vasaloppet@pdf.attest.nu

BIRKEBEINERRENNET

Birken AS
Torget 11
2450 Rena
or
Birken AS
Postboks 84
2451 Rena
Norway
VAT: NO912889912

Electronic PDF invoices shall be sent to:
birken@faktura.poweroffice.net

REISTADLØPET & GRAND FINALE SUMMIT 2 SENJA

Reistadløpet AS
Ole Reistads vei 116
9325 Bardufoss
Norway
VAT: NO917388555

Electronic PDF invoices shall be sent to:
reistadloepet.as@mg.regnskap.snn.no

QCI - QUOTA COUNTRY INDEX

QCI are calculated from following parameters:

- Pro Team nationalities
- Pro Athletes nationalities
- Ski Classics overall prize money
- Event prize money
- Top 50 places
- Podium places
- Total points in Champion, Sprint and Climb competitions

QUOTA COUNTRY INDEX FOR SEASON XVIII	
NORWAY	49,97%
SWEDEN	27,18%
FRANCE	8,88%
ITALY	3,31%
CZECH REPUBLIC	2,68%
FINLAND	2,39%
GERMANY	1,97%
SWITZERLAND	1,71%
AUSTRIA	0,72%
DENMARK	0,61%
AUSTRALIA	0,14%
POLAND	0,13%
NETHERLANDS	0,12%
GREAT BRITAIN	0,07%
SPAIN	0,05%
USA	0,05%
SLOVENIA	0,01%