

# **SKI CLASSICS PRO TOUR XVII**

## **RULES AND REGULATIONS**

### **ATHLETES & PRO TEAMS**

#### **2025/2026**



**V 17.1**

# CONTENT

<b>SEASON XVII TOUR MAP .....</b>	<b>03</b>
<b>COMPETITIONS .....</b>	<b>04</b>
<b>UPDATES IN ATHLETE AND PRO TEAM RULES .....</b>	<b>05</b>
<b>ATHLETES AND PRO TEAM RULES SEASON XVII .....</b>	<b>06</b>
<b>APPENDIX 1 SEASON XVII 2025/2026 CALENDAR.....</b>	<b>11</b>
<b>APPENDIX 2 POINTS TABLES .....</b>	<b>12</b>
<b>APPENDIX 3 PRIZE MONEY DISTRIBUTION .....</b>	<b>14</b>
<b>APPENDIX 4 FLOWER CEREMONY RUNNING ORDER .....</b>	<b>15</b>
<b>APPENDIX 5 PRO TEAM LICENSE APPLICATION .....</b>	<b>16</b>
<b>APPENDIX 6 SKI CLASSICS ATHLETE DECLARATION .....</b>	<b>17</b>
<b>APPENDIX 7 BIB COLORS .....</b>	<b>18</b>
<b>APPENDIX 8 EVENT CONTACTS.....</b>	<b>19</b>
<b>APPENDIX 9 EVENT PRIZE MONEY .....</b>	<b>20</b>
<b>APPENDIX 10 FINANCIAL DETAILS.....</b>	<b>21</b>
<b>APPENDIX 11 QCI.....</b>	<b>22</b>

## SEASON XVII TOUR MAP



## COMPETITIONS



### CHAMPION COMPETITION

The yellow Champion bib is worn by the male and female athlete with the most current Champion points before each event. The overall winner is the athlete with most Champion points after the season in each gender. Most points collected from a single Ski Classics Challengers event is included.



### CLIMB COMPETITION

The squared patterned "Lumberjack" Climb bib is worn by the male and female with the most current Climb points before each event. There are 0-2 Climb checkpoints in the events. The seven fastest men and seven fastest women split times at the climb checkpoint will get points. The overall winner is the athlete with most Climb points after the season in each gender.



### GRAND CLASSICS

The Grand Classics events are Marcialonga, Jizerska Padesátka, Vasaloppet and Birkebeinerrennet. The athlete that wins all four events in one season completes a Grand Slam.



### EVENT OF THE SEASON

At the end of the season Pro Team athletes, staff and Ski Classics officials vote for the Event of the season. Awards will be handed out at the Ski Classics Final Gala.



### SPRINT COMPETITION

The green Sprint bib is worn by the male and female with the most current Sprint points before each event. There are 0-2 sprints in the events. The seven fastest men and seven fastest women split times at the sprints will get points. The overall winner is the athlete with most sprint points after the season in each gender.



### PRO TEAM COMPETITION

The Pro Team competition is determined by the total amount of Pro Team points. Pro Team points are distributed at each Pro Tour event based on; the Pro Team's collected Champion points from the Pro Team's best two male athletes and best two female athletes, the total Sprint and Climb points collected by the team, 50% Champion points of the best Youth athlete in the team and the 50% Champion points of the best athlete from an emerging country (QCI). If Premium Sprints points are distributed at events, those points are added on top of the Pro Team points of the day.



### SKI CLASSICS RANKING

SC Ranking points are handed out in all Ski Classics events. Ranking points are based on the race time difference between a skier and the winner in their gender. The 12 best event ranking points during last 24 months are counted.



### SKI CLASSICS LEGENDS

In order to become a Legend, a skier needs to win 5 individual Pro Tour events or more. Wins in events that have been part of Ski Classics before the tour was created count for athletes that have been taking part in Ski Classics.



### YOUTH COMPETITION

The pink Youth bib is given to the best male and female athlete of age 26 or below. The age of the athlete is determined by the year when the Ski Classics final of the season takes place. Points in the Champion competition are used. Athletes single best result from a Ski Classics Challengers event is included.

## CUBS VETS

### CUBS & VETS

The Cubs category are athletes with age of 23 or below and ranging from the national lowest allowed age. Maximum 5 different cubs in total per season and Pro Team, regardless of gender.

The Vets category are athletes with an age of 40 years or older.

The age of the athlete is determined by the year when the Ski Classics final of the season takes place.



### SKI CLASSICS HALL OF FAME

Ski Classics Hall of Fame consists of Ski Classics Legends, Pro Team Directors of the Season and other staff elected by Ski Classics.



### PRO TEAM DIRECTOR OF THE SEASON

The award will be selected by Ski Classics and handed out to the Pro Team Director who has contributed to the development of the sport and the interest for Ski Classics.

# UPDATES IN ATHLETE AND PRO TEAM RULES

## UPDATES FROM SEASON XVII

### PRO TEAM COMPETITION

The Pro Team competition is determined by the total amount of Pro Team points. Pro Team points are distributed at each Pro Tour event based on; the Pro Team's collected Champion points from the Pro Team's best two male athletes and best two female athletes, the total Sprint and Climb points collected by the team, 50% Champion points of the best Youth athlete in the team and the 50% Champion points of the best athlete from an emerging country (QCI). If **Premium Sprint points** are distributed at events, those points are added on top of the Pro Team points of the day. If the Premier sprint points are handed out at a separate sprint event, they are added on top of the main race of the event weekend.

### CUBS & VETS

The Cubs category are athletes with age of 23 or below and ranging from the national lowest allowed age. Maximum 5 different cubs in total per season and Pro Team, regardless of gender.

### PRO TEAM DIRECTOR OF THE SEASON

The award will be selected by Ski Classics and handed out to the Pro Team Director who has contributed to the development of the sport and the interest for Ski Classics.

### PRO TEAM

An athlete shall be considered a member of a Pro Team until October 1st. From May 1st, any request for an earlier Pro Team change must be submitted to [racedirector@skiclassics.com](mailto:racedirector@skiclassics.com).

Pro Teams registration is open from August 15th to September 1st 2025.

Ski Classics will invoice the Pro Team License fee after the registration has been completed. The fee is EUR 2500 + VAT for registration made until September 1st 2025 included. Ski Classics may approve late Pro Team registrations after September 1st 2025. The late registration fee is EUR 3500 + VAT. Pro Team License fee is not refundable and must be paid before the Pro Team may collect points in a Ski Classics event.

### ATHLETES

Pro Teams may unregister an athlete from its roster no later than December 1st. Deregistration is subject to the athlete's explicit consent. The athlete is not eligible to register with another Pro Team for the remainder of the current Pro Tour season. Both the Pro Team Director and the affected athlete must provide written notification of the deregistration and the athlete's consent to [racedirector@skiclassics.com](mailto:racedirector@skiclassics.com).

### BONUS ATHLETES

From February 15th 2026 Pro Teams are allowed to register one male and one female athlete extra for the current Pro Tour season. These athletes may be from established or emerging QCI countries.

## EVENT REGISTRATIONS

Pro Teams are allowed to make name changes until 24 hours before start. Athlete name changes are permitted under the following conditions:

- Changed athletes must be of the same gender.
- Cubs can only be replaced by Cubs.
- Non-Cubs Pro Team member can only be replaced by Non-Cubs.
- Changes are not permitted for bonus athletes.

## RACE SUIT

Official Pro Team race suits must be sent to Ski Classics latest September 30th. Race suits must comply with the *FIS 2.4, Specifications for commercial markings on equipment*.

## POINTS

Ski Classics Pro Tour events may categorize as a 100p, 300p or 500p event, where the number indicates the amount of Ski Classics points to winning athletes and which points table applicable at the event.

Points tables updated with new points system.

## PREMIUM SPRINT

Added in the rules.

## PRO TEAM TEMPO

Individual points are distributed at the Pro Team Tempo.

## SIDE EVENTS

Pro Team athletes and Pro Team Director must be present at press conference / pre-race interviews if they are invited. Ski Classics has the right to withdraw 50 Champion points if an invited athlete doesn't show up on time.

## EQUIPMENT CONTROL

Relevant FIS ICR (2024) rules:

Rule 222.8, *Prohibition of fluorinated wax*

Rule 343.8.1, *Maximum pole length regulations*

## START PROCEDURE

Athletes from the leading Pro Team competition shall be seeded in the row immediately behind the color bibs athletes.

## PRIZE MONEY

Recommended to increase due to inflation.

Overall season prize money must be invoiced Ski Classics latest April 30th, 2026.

# ATHLETES AND PRO TEAM RULES SEASON XVII

## GENERAL

**1.** Ski Classics Pro Tour season XVII is defined as April 1st 2025 until March 29th 2026. Ski Classics Challengers season XVII is defined as March 24th 2025 until March 22nd 2026.

**2.** Ski Classics Rules and Regulations are valid on top of the FIS rules (ICR). Athletes must act in accordance to FIS (ICR) and Ski Classics rules and regulations.

- a** Ski Classics is responsible for and has the right to amend the Ski Classics rules and regulations at any time.
- b** Ski Classics has the right to act upon violations of the rules.
- c** Ski Classics representative is part of the Competition Jury.
- d** Ski Classics Pro Tour events are held in classic technique, all classic sub-techniques to be clear; double poling, double poling with kick, diagonal, herringbone and downhill position, are allowed at all parts of the event courses.
- e** In case of a Force Majeure incident Ski Classics has the sole right to; decide the outcome of the Ski Classics competitions, points and prize distribution; to rearrange result lists; to reestablish ongoing order of athletes during an event; pause and restart an event; or take other actions necessary.

## PRO TEAMS

**3.** A Pro Team must have a specified owner. The owner can be a juridical- or physical person. The nationality of the Pro Team owner determines the nationality of the Pro Team. If change of ownership of the Pro Team, information about the new owner must be e-mailed to [racedirector@skiclassics.com](mailto:racedirector@skiclassics.com) and be approved by Ski Classics.

- a** A Pro Team must consist of:
  - minimum 6 and maximum 10 athletes
  - including 3 athletes of both genders and
  - maximum 8 athletes from established nations and of them maximum 5 of each gender.See [Appendix 11](#).
- In addition, 2 Cubs may be counted on top of the 10 fixed Pro Team athletes. Cubs may be different skiers at each event. A Cub athlete may only represent one Pro Team each season.
- b** An athlete shall be considered a member of a Pro Team until October 1st. From May 1st, any request for an earlier Pro Team change must be submitted to [racedirector@skiclassics.com](mailto:racedirector@skiclassics.com).
- c** The Pro Team name must also include the word "Team".
- d** The owner of the Pro Team may request a change of the name of the Pro Team by emailing to [racedirector@skiclassics.com](mailto:racedirector@skiclassics.com). Name change must be confirmed by Ski Classics to be valid.
- e** Pro Teams registration is open from August 15th to September 1st 2025.
- f** Ski Classics will invoice the Pro Team License fee after the registration has been completed. The fee is EUR 2500 + VAT for registration made until September 1st 2025 included. Ski Classics may approve late Pro Team registrations after September 1st 2025. The late registration fee is EUR 3500 + VAT. Pro Team License fee is not refundable and must be paid before the Pro Team may collect points in a Ski Classics event.

## PRO TEAM LICENSE

**4.** To be part of Ski Classics and to get points in the Pro Team competitions, the Pro Teams must hold a Pro Team License. The Pro Team License gives the right to register a Pro Team for the Pro Team competition.

- a** To apply for a Pro Team License, a presentation of the Pro Team including the information specified in [Appendix 5](#) shall

be sent to [racedirector@skiclassics.com](mailto:racedirector@skiclassics.com).

- b** Previous Ski Classics season TOP 25 Pro Teams are guaranteed a Pro Team License:
  - if the wish to prolong is communicated by email to [racedirector@skiclassics.com](mailto:racedirector@skiclassics.com) before July 1st 2025.
  - if minimum two athletes in the Pro Team from previous season remains in the Pro Team upcoming season.
- c** Pro Teams ranked 26-35 may apply for a new Pro Team License until July 1st 2025 according to [Appendix 5](#).
- d** An owner of a Pro Team with Pro Team License can change the ownership of the Pro Team and License. A change of ownership must include the existing Pro Team (name of the team) and athletes with signed agreement. The information about the new owner of the Pro Team and license must be e-mailed to [racedirector@skiclassics.com](mailto:racedirector@skiclassics.com) and must be confirmed by Ski Classics for the change to be valid.
- e** Ski Classics has the sole right at own decision to hand out Pro Team Licenses. No Pro Team License will be granted a Pro Team with outstanding invoices from Ski Classics.
- f** Registered Pro Teams receive a unique Pro Team License ID.
- g** When a Pro Team License has been granted, the Pro Team shall be registered no later than September 1st 2025 included. By registering, the Pro Team accepts Ski Classics Rules and Regulations. Number of registered Ski Classics Pro Teams is limited to 35.
- h** Late Pro Team registrations may be accepted by Ski Classics.
- i** Pro Teams must register minimum three female athletes and three male athletes to minimum five events.
- j** Participation in Prologue weekend including Pro Team Presentation is mandatory for Pro Teams with a license.
- k** Pro Teams with a Pro Team License are provided with Pro Team service vests at the beginning of the season. One Pro Team Director + 9 Pro Team service vests. Service vests should be worn in service zones and other Pro Team areas.

## ATHLETES

**5.** Athletes must be registered as a member of an official Ski Classics Pro Team latest 48 hours before an event and have a valid FIS-license in order to compete for Ski Classics points and Ski Classics prize money.

**6.** Pro Teams may unregister an athlete from its roster no later than December 1st. Deregistration is subject to the athlete's explicit consent. The athlete is not eligible to register with another Pro Team for the remainder of the current Pro Tour season. Both the Pro Team Director and the affected athlete must provide written notification of the deregistration and the athlete's consent to [racedirector@skiclassics.com](mailto:racedirector@skiclassics.com).

**7.** Athletes are guaranteed start entries in each event if the following criteria are fulfilled:

- a** The athlete is registered in a Pro Team.
- b** The athlete has an active FIS license.
- c** The athlete is registered to each event through Ski Classics latest September 1st 2025 included. Athletes registered after September 1st 2025 will not be guaranteed a start place.
- d** An athlete will start in the elite group if the athlete has a Ski Classics ranking that ensures a spot in the elite group.

## BONUS ATHLETES

**8.** From February 15th 2026 Pro Teams are allowed to register one male and one female athlete extra for the current Pro Tour season. These athletes may be from established or emerging



# ATHLETES AND PRO TEAM RULES SEASON XVII

QCI countries.

## EVENT REGISTRATIONS

**9.** When registered to events through Ski Classics, athletes accept each event's participation rules.

- a** Registration of athletes to Ski Classics events are done when registering a Pro Team at [www.skiclassics.com](http://www.skiclassics.com).
- b** 2025/2026 the registration fee is Euro 70 + VAT per athlete and event. Pro Team tempo registration fee is EUR 150 + VAT per Pro Team.
- c** Ski Classics will invoice the total registration fee of event registrations made through Ski Classics.
- d** A Pro Team can for the reduced registration fee register 1 or 2 Cubs entries for certain events until September 1st. The name of the starting Cubs athletes shall be announced to Ski Classics latest 7 days prior each event. If Cub spots are not registered in September, normal late entry process and fees will apply. Maximum 2 Cubs per event.
- e** Event registrations made through Ski Classics can only be transferred to Pro Team athletes within the same Pro Team. In case of cancellation of an event due to Force Majeure registration fees are non-refundable. If an replacement event is organized, then the Pro Team registrations are automatically transferred to the substituting event.

Pro Team Tempo is a non refundable event.

- f** Registrations after September 1st 2025 are made directly to each event according to each event's own rules, no start place is guaranteed and late registration fees may be different than in point b above.
- g** Pro Teams are allowed to make name changes until 24 hours before start. Athlete name changes are permitted under the following conditions:
  - Changed athletes must be of the same gender.
  - Cubs can only be replaced by Cubs.
  - Non-Cubs Pro Team members can only be replaced by Non-Cubs.
  - Changes are not permitted for bonus athletes.

## ATHLETE DECLARATION & AGREEMENT

**10.** Pro Team athletes must sign the Ski Classics Athlete Declaration in [Appendix 6](#).

- a** The athlete declarations must be scanned and emailed to [racedirector@skiclassics.com](mailto:racedirector@skiclassics.com) to be registered in Ski Classics.
- b** The Pro Teams must have a signed athlete agreement with their registered athletes including that they accept the rules of Ski Classics and the athlete declaration in [Appendix 6](#). The athlete agreement must contain; Start and end date of the agreement, termination clause including what to do if an athlete or Pro Team wants to end the agreement before end date. Antidoping clause including what happens if the athlete gets convicted breaking the antidoping rules. Emergency contact name and phone number outside the Pro Team.

**11.** Ski Classics recommend Pro Teams to have a documented plan to handle crisis.

## POINTS

**12.** Ski Classics points are awarded according to the points table in [Appendix 2](#).

- a** Ski Classics Pro Tour events may categorize as a 100p, 300p or 500p event, where the number indicates the amount of Ski Classics points to winning athletes and which points table applicable at the event.
- b** All registered Pro Team athletes finishing a Pro Tour event receive minimum one point in the Champion competition.

**13.** Ski Classics may retain collected Ski Classics points if any violations of the rules occur. Protests and technical violation claims must be handed in to Ski Classics within 60 minutes after the winner finishes the event by handing over a written protest to the Jury, or emailing to [racedirector@skiclassics.com](mailto:racedirector@skiclassics.com). Protests are handled according to FIS ICR-rules. All results are final one hour after the event winner has finished and the Jury has checked protests. Exception will be made for doping violation cases.

**14.** An athlete must finish the race in order to receive points in the Champion, Sprint, Climb, Youth or Pro Team competition. Pro Team athletes must compete in the official registered Pro Team director design in order to compete in Ski Classics competitions at Pro Tour events. Official Pro Team race suits must be sent to Ski Classics latest September 30th. Race suits must comply with the *FIS 2.4, Specifications for commercial markings on equipment*. Design and logos on hats may differ between athletes within a Pro Team. Non-Pro Team athletes starting in Pro Team elite group should not compete in Official Pro Team race suits.

**15.** In the event of a dead-heat between two athletes the points for the places will be added together and divided by two (e.g. in a dead-heat for 1st and 2nd places, both athletes will receive  $(500+440)/2 = 470$  points or  $(300+260)/2 = 280$  points).

**16.** If two or more athletes or Pro Teams score the same number of points after the last/final event in any competitions, the leader/winner is the athlete who has:

- a** The best results (i.e. most 1st, most 2nd and most 3rd places etc.) in the specific competition.
- b** If still equal in Climb or Sprint bib competitions, the final ranking in the Champion bib competition will be decisive.

If the athletes are still equal, two (or more) winners will be awarded. The prize money for the places will be added together and divided (e.g. in a dead-heat for 1st and 2nd places, both athletes will receive the prize money of the 1st and 2nd place divided in 2).

**17.** All Pro Team athletes may calculate the single best result from a Ski Classics Challengers event per season in the Champion and Youth bib competition. Challengers event points are handed out according to [Appendix 2](#).

## SIDE EVENTS

**18.** All Ski Classics athletes shall be available for the media. Points may be retained from the Pro Team if athletes are not available for:

- a** Short comments for media on event day, prior to start.
- b** Pro Team athletes and Pro Team Director must be present at press conference / pre-race interviews if they are invited. Ski Classics has the right to withdraw 50 Champion points if an invited athlete doesn't show up on time.
- c** Available for questions from media immediately after finish and after the flower ceremony.
- d** Top 3 finishing men and women + bib holders must be present in Pro Team Area until flower ceremony is completed.
- e** If there is a Pro Team presentation before an event, the Pro Team Director and athletes must be present.

## EVENT WEEKEND

# ATHLETES AND PRO TEAM RULES SEASON XVII

**19.** Each Pro Team participating in a Ski Classics event shall have a representative present at the event's Team Captains Meeting (TCM) on the day prior to the race. The meeting is held at 16:30 local time unless otherwise stated from the race organizer.

- a** Pro Teams must collect bibs 13.00-14.00 local time race day -1 in Ski Classics truck or other informed location.

**20.** For Ski Classics athletes it is mandatory to wear provided color bibs and GPS devices if selected. GPS devices must be handed back to organiser or Ski Classics truck immediately after the race.

**21.** If a color bib leader doesn't start at an event or leads more than one bib, the highest ranked ( 1. Champ, 2. Sprint, 3. Climb, 4. Youth) available athlete in each bib competition shall wear the bib. If an athlete is leading one bib competition he or she shall wear that bib regardless of the bib ranking.

**22.** Athletes wearing Ski Classics color bibs must start in the front row of the start field. Events may let the last edition event winner start in the front row.

## EQUIPMENT CONTROL

**23.** Relevant FIS ICR (2024) rules:

Rule 222.8, *Prohibition of fluorinated wax*

Rule 343.8.1, *Maximum pole length regulations*

## WILD CARDS

**24.** During Ski Classics Pro Tour events where the initial intermediate Sprint/Climb point is within a short distance from the start, the Ski Classics Race Director holds exclusive right to issue wild cards for athletes in top of current Sprint/Climb competition standings and previous season total Sprint/Climb competition.

The wild card guarantees a better starting position compared to the athletes Ski Classics ranking for the specific event.

Wild card requests must be announced by Pro Team Directors by email to Ski Classics Race Director latest 24 hours prior TCM of each event.

The Ski Classics Race Director has the exclusive right to issue wild cards for athletes anticipated to surpass their current Ski Classics ranking.

**25.** Only finishing athletes are allowed in the finish area.

## SERVICE ZONES

**26.** If service zones are assigned at an event, following rules apply:

- a** Athletes may only receive service of drinkbelts and/or feeding (drinks, gels, bars etc.) in assigned service zones. Athletes may throw drinkbelts to staff outside of service zones.
- b** Replacement service for broken ski equipment is allowed in and outside of service zones.
- c** Trash shall only be thrown within service zones and if dedicated waste zones.
- d** Pro Team staff may only stand on each side of the race track, not in between skiers in the tracks.
- e** Pro Team Service Vests should be worn in service zones and other Pro Team areas.
- f** Violation of these rules may lead to monetary fines and with drawn points.

## COLD WEATHER PRECAUTIONS

**27.** Passages from FIS ICR (2024):

*388.1.1 There are three main factors to be considered by the Jury regarding cold weather safety: the temperature; the duration of the exposure; and, the clothing and other protection against cold weather. These factors together with any other relevant information such as the "wind chill factor" must be taken into consideration when a decision is made regarding cold weather.*

*388.2.1 If the temperature level is forecast to be between minus 15 °C and minus 25 °C at any point on the course, recommendations regarding cold weather protection should be made available to the competitors. Under such conditions it is the responsibility of the competitors to seek the information and to follow the recommendations given by the organiser.*

*388.3.1 If the temperature in a major portion of the course is minus 25 °C or below, the competition shall be delayed or cancelled.*

**28.** If an event is held under 388.2.1 conditions, the jury may decide on precautions such as allowing athletes to wear isolation clothing covering the race bib. Precautions shall if possible be communicated latest at TCM.

- a** Heating soles, socks, and gloves are allowed in all conditions.

## GAMBLING ON COMPETITIONS

**29.** Passages from the FIS ICR (2024):

*205.8 Gambling on Competitions*

*Competitors, trainers, team officials and technical officials are prohibited from betting on the outcome of competitions in which they are involved.*

## SKI CLASSICS CHALLENGERS

**30.** Ski Classics Challengers are categorized as either Challengers or Super Challengers. Ski Classics Challengers events are presented at [www.skiclassics.com](http://www.skiclassics.com). The list of Challengers events will be updated continuously through the season.

- a** Challengers events are held in cross country or roller skiing, in classic or free technique.
- b** Registrations to Challengers events are made directly to the event.
- c** Challengers event organization is responsible for distribution of prize money.
- d** Ski Classics Challengers points are distributed according to [Appendix 2](#).
- e** Ski Classics Pro Team athletes will count their single best Ski Classics Challenger result, (to be clear; single best Challenger or Super Challenger points), in the Champion and Youth competitions.

## SC RANKING

**31.** The SC Ranking is the international ranking system for long distance skiing including athletes of both genders and any level of performance.

- a** At each Pro Tour and Challengers event, SC Ranking points are distributed to all participants based on the percentual time a participant is behind the winning time in respective gender.
- b** The winner of each gender at Pro Tour event receives 2.000.000 points and at Challenger events 500.000 points.
- c** On top of point 30b, at Pro Tour events the winner receives 200.000 bonus points, 2nd placed 100.000 bonus points and 3rd placed 40.000 bonus points.
- d** SC Ranking ranks athletes on their 12 best event points the latest 24 months. SC Ranking is updated every Monday.



## START PROCEDURES

### 32. Prologue weekend

If the Prologue Weekend starts with a Pro Team Tempo, the holders of the distinctive color bibs from the previous season must wear their respective bibs during the Pro Team Tempo and must retain them for the subsequent event.

If the Prologue Weekend starts with an individual event, the holders of the distinctive color bibs from the previous season must wear their respective bibs for that first event.

### 33. Pro Team Tempo (PTT)

- a** The Pro Team Tempo is organized as an interval start competition with block starts, one Pro Team starting at a time in reversed order according to the Pro Team ranking of previous season with the top 5 ranked teams spread out in the starting field. The gap between the blocks are 4 minutes. Male Pro Team athletes starts 30 seconds ahead of female Pro Team athletes.
- b** Male Pro Team athletes who are caught up by female Pro Team athletes must leave a gap to the females and stay minimum 20 meters behind.
- c** Pro Teams must ease for passing Pro Teams and not interfere with the passing Pro Teams chosen racing line.
- d** The finishing time of the 2nd ranked male and 2nd ranked female of the team will count for the classification. The total time decides the result of the Pro Team Tempo. The Pro Team Tempo points are handed out according to points table, [Appendix 2](#), to champion bib and Pro Team Tempo competition.
- e** In the Pro Team Tempo, minimum 2 athletes per gender per team must start in order for the Pro Team to receive Pro Team points.
- f** Pro Teams that have less than two male and two female athletes on the start may start separately from the Pro Team start procedure.

### 34. Individual Time Trial (ITT)

Separated Women and Men Individual with recommended 20-60 seconds interval start. Ski Classics has the right to make the seeding for Pro Team athletes.

### 35. Mass Start

Separated Women and Men Competition mass start with seeding according to the current SC ranking.

### 36. Kilometer Zero

Gliding start from fixed start positions. Athletes must remain their position in the start field until the leading skidoo gives the start signal.

### 37. Leading Pro Team

Athletes from the leading Pro Team in the Pro Team competition shall be seeded in the row immediately behind the color bibs athletes, however the start position decision chart will be applied.

## PRIZE MONEY

**38.** Ski Classics athletes must participate in the flower ceremony and prize giving ceremony of the event (if arranged) in order to receive event prize money. Ski Classics recommends the organizing committee a minimum prize money fund of EUR 22.000+VAT for single-event weekends, EUR 33.000+VAT for double-event weekends and EUR 33.000+VAT for Grand Classics events.

**39.** Event prize money is distributed by each event and Pro Teams shall follow the instructions given by each event organization. Prize money amounts in [Appendix 9](#) and invoice information in [Appendix 10](#). Invoices shall be sent latest April 30th, 2026.

**40.** Ski Classics Pro Teams and athletes must participate in the prize ceremony at the Ski Classics Final in order to receive overall season prize money. If an athlete cannot participate in the Ski Classics Final due to illness and/or reasons beyond the athlete's control, the athlete must submit documentation stating clearly the reasons for not attending. The document must be certified by a medical doctor and submitted to Ski Classics in order for the athlete's points to be valid for the overall results. Overall prize money is distributed according to [Appendix 3](#).

**41.** Overall season prize money must be invoiced Ski Classics latest April 30th, 2026.

- a** Invoices shall be sent by a registered company, owned either by Pro Team or individual Pro Team athlete. The company must be registered in the home country of the Pro Team or Pro Team athlete and shall apply and follow the rules and regulations regarding tax and VAT of this country.
- b** Prize money shall be invoiced in EUR without VAT applied.
- c** Invoices shall include the following information:
  - Company name
  - Invoice date
  - Invoice number
  - Due date with payment terms of 30 days
  - Amount of prize money (EUR)
  - IBAN number of the bank account
  - BIC number of the bank account
  - Registration/VAT number of the company

#### AND

- If the company is registered in an EU country the following text must be written on the invoice "Reverse charge on VAT".

#### OR

- If the company is registered in a non-EU country the following text must be written on the invoice "Article 44 VAT directive".

**42.** Ski Classics official Pro Teams shall have the Ski Classics Pro Team logo on their homepage, hyperlinked to [www.skiclassics.com](http://www.skiclassics.com).

**43.** Ski Classics and the Events part of Ski Classics, may use photos and videos of registered Pro Teams and athletes in order to market Ski Classics without prior permission or remuneration.

**44.** Pro Teams are encouraged to share Ski Classics content in social media and other channels, and to share their own content and news with Ski Classics by email to: [press@skiclassics.com](mailto:press@skiclassics.com).

**45.** Pro Teams are allowed to use up to 30 seconds from the event highlight created by Ski Classics, for their own social media usage.

**46.** Ski Classics Pro Teams are allowed to use Ski Classics Official Pro Team logo for their own marketing purposes.

## SKI CLASSICS PRO TOUR COMPETITION

### 47. Yellow Competition

The yellow Champion bib is worn by the male and female athlete with the most current Champion points before each event. The overall winner is the athlete with most Champion points after the season in each gender. Most points collected from a single

Ski Classics Challengers event is included.

## 48. Sprint Competition

The green Sprint bib is worn by the male and female with the most current Sprint points before each event. There are 0-2 sprints in the events. The seven fastest men and seven fastest women split times at the sprints will get points. The overall winner is the athlete with most sprint points after the season in each gender.

## 49. Climb Competition

The squared patterned "Lumberjack" Climb bib is worn by the male and female with the most current Climb points before each event. There are 0-2 Climb checkpoints in the events. The seven fastest men and seven fastest women split times at the climb checkpoint will get points. The overall winner is the athlete with most Climb points after the season in each gender.

## 50. Youth Competition

The pink Youth bib is given to the best male and female athlete of age 26 or below. The age of the athlete is determined by the year when the Ski Classics final of the season takes place. Points in the Champion competition are used. Athletes single best result from a Ski Classics Challengers event is included.

## 51. Pro Team Competition

The Pro Team competition is determined by the total amount of Pro Team points after the season. Pro Team points are distributed according to the Pro Team table on [Appendix 2](#) at an event based on ;

- a The Pro Team's collected Champion points from the Pro Team's best two male athletes and best two female athletes
  - b The total Sprint and Climb points collected by the team
  - c 50% Champion points of the best Youth athlete in the team
  - d 50% Champion points of the best athlete from an emerging country (QCI)
- and

If Premium Sprint points are distributed at events, those points are added on top of the Pro Team points of the day. If the Premier sprint points are handed out at a separate sprint event, they are added on top of the main race of the event weekend.

## 52. Cubs and Vets

- a The Cubs category are athletes with age of 23 or below and ranging from the national lowest allowed age. Maximum 5 different cubs in total per season and Pro Team, regardless of gender.
- b The Vets category are athletes with an age of 40 years or older.
- c The age of the athlete is determined by the year when the Ski Classics final of the season takes place.

## 53. Grand Classics

Ski Classics Grand Classics events for Season XVII are Marcialonga, Jizerská 50, Vasaloppet and Birkebeinerrennet.

## 54. Grand Slam

The Pro Team athlete who wins all four Grand Classics events in one season completes a Grand Slam. The Grand Slam net prize money fund specified in [Appendix 3](#), will be distributed according to following conditions:

- a One male Pro Team athlete and/or one female Pro Team athlete wins all four Grand Classics events in one season.

- b All wins have been achieved according to good sportsmanship. Ski Classics reserves the right to withhold the prize money fund in full or partly, if suspected or proven misconduct by the winning athlete, Pro Team other athletes or Pro Teams (e.g. co-athletes of same Pro Team intentionally lose an event).
- c If two Pro Team athletes complete the Grand Slam in one season, the prize money fund will be divided equally between the two athletes.
- d If one or more Grand Classics events are moved to other venues, replaced or in any way modified from the original race track it will not be categorized as a Grand Classics event, and hence, the Grand Classics prize money fund will not be distributed.

## 55. Ski Classics Hall of Fame

Ski Classics Hall of Fame consists of Ski Classics Legends, Pro Team Directors of the Season and other staff elected by Ski Classics.

## 56. Event of the Season

At the end of the season Pro Team athletes, staff and Ski Classics officials vote for the Event of the season. Awards will be handed out at the Ski Classics Final Gala.

## 57. Ski Classics Legend

In order to become a Legend, a skier needs to win 5 individual Pro Tour events or more. Wins in events that have been part of Ski Classics before the tour was created count for athletes that have been taking part in Ski Classics.

## 58. Pro Team Director of the Season

The award will be selected by Ski Classics and handed out to the Pro Team Director who has contributed to the development of the sport and the interest for Ski Classics.

\*Preliminary start time

## Ski Classics Prologue Weekend

### Event 1 – Bad Gastein PTT

Bad Gastein, Austria  
Saturday December 13th 2025  
7 km  
Start time: 08:30 CET  
Pro Team Competition points  
PTT Champion Bib points

## Ski Classics Prologue Weekend

### Event 2 – Bad Gastein Kriterium

Bad Gastein, Austria  
Sunday December 14th 2025  
36 km  
Start times:  
Women: 09:25 CET  
Men: 09:00 CET  
Pro Tour 300p  
100% Sprint x2  
50% Climb x 2

### Event 3 – Engadin La Diagonela

Pontresina - Zuoz, Switzerland  
Saturday January 17th 2026  
55 km  
Start times:  
Women: 10:00 CET  
Men: 09:55 CET  
Pro Tour 300p  
100% Sprint + Premier Sprint Samedan

## Grand Classics

### Event 4 – Marcialonga

Moena-Cavalese, Italy  
Sunday January 25th 2026  
70 km  
Start times:  
Women: 08:05 CET  
Men: 08:00 CET  
Pro Tour 500p - GRAND CLASSICS  
100% Sprint Canazei  
100% Sprint Predazzo  
Iconic Climb Cascata

### Event 5 – Bedřichov Sprint

Bedřichov, Czech Republic  
Friday January 30th 2026  
1.5 km  
Start times:  
Women: 16:00 CET  
Men: 16:30 CET  
Sprint Event Champion Bib point  
100% Sprint + Premier Sprint

## Grand Classics

### Event 6– Jizerská Padesátka

Bedřichov, Czech Republic  
Sunday February 1st 2026  
50km  
Start times:  
Women: 08:00 CET  
Men: 08:30 CET  
Pro Tour 500p - GRAND CLASSICS  
100% Climb Na Kneipe  
100% Climb Smědava

## Grand Classics

### Event 7 – Vasaloppet

Sälen - Mora, Sweden  
Sunday March 1st 2026  
90 km  
Start times:  
Women: 08:00 CET  
Men: 08:00 CET  
Pro Tour 500p - GRAND CLASSICS  
100% Climb Högsta Punkten  
100% Sprint Smågan  
100% Sprint Evertsberg

### Event 8 – Orsa Grönklitt 50k ITT Women

Orsa Grönklitt, Sweden  
Sunday March 7th 2026  
50 km  
Start times:  
Women: 09:25 CET  
Pro Tour 300p  
100% Sprint  
100% Climb

### Event 9 – Orsa Grönklitt 50k ITT Men

Orsa Grönklitt, Sweden  
Sunday March 8th 2026  
50 km  
Start times:  
Men: 09:00 CET  
Pro Tour 300p  
100% Sprint  
100% Climb

## Grand Classics

### Event 10 – Birkebeinerrennet

Rena - Lillehammer, Norway  
Saturday March 14th 2026  
54 km  
Start times:  
Women: 08:00 CET  
Men: 07:45 CET  
Pro Tour 500p - GRAND CLASSICS  
Iconic Climb Raudfjellet  
100% Climb Midtfjellet

### Event 11 – Marcialonga Bodo

Bodø, Norway  
Saturday March 21st 2026  
50 km  
Start times:  
Women: 10:20 CET  
Men: 10:15 CET  
Pro Tour 300p  
100% Sprint  
100% Climb Junkerfjellet

### Event 12 – Reistadløpet

Setermoen - Bardufoss, Norway  
Saturday March 28th 2026  
46 km  
Start times:  
Women: 10:05 CET  
Men: 10:00 CET  
Pro Tour 300p  
100% Sprint + Premier Sprint Storlømyra  
Iconic Climb Orta

### Event 13 – Grand Finale Summit 2 Senja

Bardufoss - Finnsnes, Norway  
Sunday March 29th 2026  
60 km  
Start times:  
Women: 08:35 CET  
Men: 08:30 CET  
Pro Tour 300p  
100% Sprint + Premier Sprint Johannesmyra  
Iconic Climb Magdaskaret

## APPENDIX 2 • POINTS TABLE 1/2

### CHAMPION BIB INDIVIDUAL POINTS TABLES

PRO TOUR 500 GRAND CLASSICS	
CHAMPION	
POSITION	POINTS
#1	500
#2	440
#3	400
#4	370
#5	340
#6	310
#7	290
#8	270
#9	250
#10	230
#11	210
#12	190
#13	170
#14	165
#15	160
#16	155
#17	150
#18	145
#19	140
#20	137
#21	134
#22	131
#23	128
#24	125
#25	122
#26	119
#27	116
#28	113
#29	110
#30	107
#31	104
#32	101
#33	98
#34	95
#35	92
#36	89
#37	86
#38	84
#39	82
#40	80
#41	78
#42	76
#43	74
#44	72
#45	70
#46	68
#47	66
#48	64
#49	62
#50	60
#51	58
#52	56
#53	54
#54	52
#55	50
#56	48
#57	46
#58	44
#59	42
#60	40
#61	38
#62	36
#63	34
#64	32
#65	30
#66	28
#67	26
#68	24
#69	22
#70	20
#71	18
#72	16
#73	14
#74	12
#75	10
#76	8
#77	6
#78	4
#79	2
≥ #80	1

PRO TOUR 300	
CHAMPION	
POSITION	POINTS
# 1	300
# 2	260
# 3	230
# 4	200
# 5	180
# 6	175
# 7	170
# 8	165
# 9	160
# 10	155
# 11	152
# 12	149
# 13	146
# 14	143
# 15	140
# 16	137
# 17	134
# 18	131
# 19	128
# 20	125
# 21	122
# 22	119
# 23	116
# 24	113
# 25	110
# 26	107
# 27	104
# 28	101
# 29	98
# 30	95
# 31	92
# 32	89
# 33	86
# 34	83
# 35	80
# 36	77
# 37	74
# 38	71
# 39	68
# 40	65
# 41	62
# 42	59
# 43	56
# 44	53
# 45	50
# 46	47
# 47	44
# 48	41
# 49	38
# 50	35
# 51	33
# 52	31
# 53	29
# 54	27
# 55	26
# 56	25
# 57	24
# 58	23
# 59	22
# 60	21
# 61	20
# 62	19
# 63	18
# 64	17
# 65	16
# 66	15
# 67	14
# 68	13
# 69	12
# 70	11
# 71	10
# 72	9
# 73	8
# 74	7
# 75	6
# 76	5
# 77	4
# 78	3
# 79	2
≥ # 80	1

PTT POINTS	
CHAMPION	
PRO TEAM POSITION	POINTS
# 1	100
# 2	90
# 3	85
# 4	80
# 5	75
# 6	70
# 7	65
# 8	60
# 9	55
≥ # 10	50

SPRINT EVENT POINTS	
CHAMPION	
POSITION	POINTS
# 1	100
# 2	90
# 3	85
# 4	80
# 5	76
# 6	73
# 7	70
# 8	64
# 9	62
# 10	60
# 11	58
# 12	56
# 13	54
# 14	52
≥ # 15	50

## APPENDIX 2 • POINTS TABLE 2/2

### SPRINT BIB POINTS TABLE

SPRINT		
MEN	POINTS	
POSITION	100%	50%
#1	30 p	15 p
#2	23 p	12 p
#3	16 p	8 p
#4	12 p	6 p
#5	9 p	4 p
#6	6 p	3 p
#7	4 p	2 p
WOMEN		
#1	30 p	15 p
#2	23 p	12 p
#3	16 p	8 p
#4	12 p	6 p
#5	9 p	4 p
#6	6 p	3 p
#7	4 p	2 p

### CLIMB BIB POINTS TABLE

CLIMB			
MEN	POINTS		
POSITION	ICONIC	100%	50%
#1	45 p	30 p	15 p
#2	35 p	23 p	12 p
#3	24 p	16 p	8 p
#4	18 p	12 p	6 p
#5	13 p	9 p	4 p
#6	9 p	6 p	3 p
#7	6 p	4 p	2 p
WOMEN			
#1	45 p	30 p	15 p
#2	35 p	23 p	12 p
#3	24 p	16 p	8 p
#4	18 p	12 p	6 p
#5	13 p	9 p	4 p
#6	9 p	6 p	3 p
#7	6 p	4 p	2 p

### CHALLENGERS POINTS TABLES

SUPER CHALLENGERS	
POSITION	POINTS
# 1	100
# 2	97
# 3	95
# 4	93
# 5	91
# 6	89
# 7	87
# 8	85
# 9	83
# 10	81
# 11	79
# 12	77
# 13	75
# 14	73
# 15	71
# 16	69
# 17	67
# 18	65
# 19	63
# 20	61
# 21	59
# 22	57
# 23	55
# 24	53
# 25	51
# 26	49
# 27	47
# 28	45
# 29	43
# 30	41
# 31	39
# 32	37
# 33	35
# 34	33
# 35	31
# 36	29
# 37	27
# 38	25
# 39	23
# 40	21
# 41	20
# 42	19
# 43	18
# 44	17
# 45	16
# 46	15
# 47	14
# 48	13
# 49	12
# 50	11
# 51	10
# 52	9
# 53	8
# 54	7
# 55	6
# 56	5
# 57	4
# 58	3
# 59	2
≥ # 60	1

CHALLENGERS	
POSITION	POINTS
# 1	50
# 2	49
# 3	48
# 4	47
# 5	46
# 6	45
# 7	44
# 8	43
# 9	42
# 10	41
# 11	40
# 12	39
# 13	38
# 14	37
# 15	36
# 16	35
# 17	34
# 18	33
# 19	32
# 20	31
# 21	30
# 22	29
# 23	28
# 24	27
# 25	26
# 26	25
# 27	24
# 28	23
# 29	22
# 30	21
# 31	20
# 32	19
# 33	18
# 34	17
# 35	16
# 36	15
# 37	14
# 38	13
# 39	12
# 40	11
# 41	10
# 42	9
# 43	8
# 44	7
# 45	6
# 46	5
# 47	4
# 48	3
# 49	2
≥ # 50	1

### PRO TEAM POINTS TABLE

PRO TEAM COMPETITION	
POSITION	POINTS
# 1	200
# 2	180
# 3	160
# 4	140
# 5	120
# 6	100
# 7	90
# 8	85
# 9	80
# 10	75
# 11	70
# 12	65
# 13	60
# 14	55
# 15	50
# 16	45
# 17	40
# 18	35
# 19	32
# 20	30
# 21	28
# 22	26
# 23	24
# 24	22
# 25	20
# 26	18
# 27	16
# 28	14
# 29	12
# 30	10
# 31	9
# 32	8
# 33	7
# 34	6
# 35	5

### PREMIUM SPRINT POINTS TABLE

SPRINT	
MEN	POINTS
#1	30 p
#2	23 p
#3	16 p
#4	12 p
#5	9 p
#6	6 p
#7	4 p
WOMEN	
#1	30 p
#2	23 p
#3	16 p
#4	12 p
#5	9 p
#6	6 p
#7	4 p

Premium Sprint points are counted on top of the Pro Team points



## APPENDIX 3 • PRIZE MONEY DISTRIBUTION

**TOTAL PRIZE SUM: EUR TBC**



CHAMPION COMPETITION WOMEN	
POSITION	PERCENTAGE
1	13.3%
2	6.3%
3	3.7%
4	2.5%
5	1.3%



CHAMPION COMPETITION MEN	
POSITION	PERCENTAGE
1	13.3%
2	6.3%
3	3.7%
4	2.5%
5	1.3%



PRO TEAM COMPETITION	
POSITION	PERCENTAGE
1	7.5%
2	4.2%
3	3.2%
4	2.5%
5	2.0%
6	1.6%
7	1.4%



SPRINT COMPETITION WOMEN	
POSITION	PERCENTAGE
1	3.3%
2	1.1%
3	0.7%



SPRINT COMPETITION MEN	
POSITION	PERCENTAGE
1	3.3%
2	1.1%
3	0.7%



GRAND SLAM	EUR 100 000
JACKPOT CONTRIBUTION	1.0%



CLIMB COMPETITION WOMEN	
POSITION	PERCENTAGE
1	3.3%
2	1.1 %
3	0.7%



CLIMB COMPETITION MEN	
POSITION	PERCENTAGE
1	3.3%
2	1.1 %
3	0.7%



YOUTH COMPETITION WOMEN	
POSITION	PERCENTAGE
1	1.0%



YOUTH COMPETITION MEN	
POSITION	PERCENTAGE
1	1.0%

### FLOWER CEREMONY STAGE

If possible, the stage for the flower ceremony should be located in front of both spectators and photographers and next to the Mixed Zone - close to the TV interview positions. The exact location is to be coordinated with TV Director.

### FLOWER CEREMONY RUNNING ORDER

The Flower Ceremony will be executed immediately after each race finish. It will follow a standardized ritual by 1-2 designees of the OC and a host as below, Ski Classics Race Director will give the speaker official results and holders of color bibs before ceremony. Men and women flower ceremonies may be combined.

- Introduction with the Ski Classics anthem
- Pro Team Director of the Pro Team collecting most Pro Team points at the event + Photo session.

### COLOR BIBS

Bibs are put on and female bib holder waits for male bib holder to join the stage.

- Pink Youth color bib woman/man + *Photo session*
- Green Sprint color bib woman/man + *Photo session*
- Lumberjack Climb color bib woman/man + *Photo session*
- Yellow Champion color bib woman/man + *Photo session*

### WOMEN

- Ranking of the day 1-3. Speaker announcing top 3 athletes in order 3rd-2nd-1st,
- Flower ceremony 3rd-2nd-1st
- National anthem of winner
- Sparkeling drink pop-out
- Photo session top 3 (during photo session with background music)
- Champagne shower
- Top 3 leaving stage.

### MEN

- Ranking of the day 1-3. Speaker announcing top 3 athletes in order 3rd-2nd-1st,
- Flower ceremony 3rd-2nd-1st
- National anthem of winner
- Sparkeling drink pop-out
- Photo session top 3 (during photo session with background music)
- Champagne shower
- Top 3 leaving stage
- Photo session winner Women and winner Men combined
- End vignette Ski Classics anthem

## APPENDIX 5 • LICENSE APPLICATION TEMPLATE

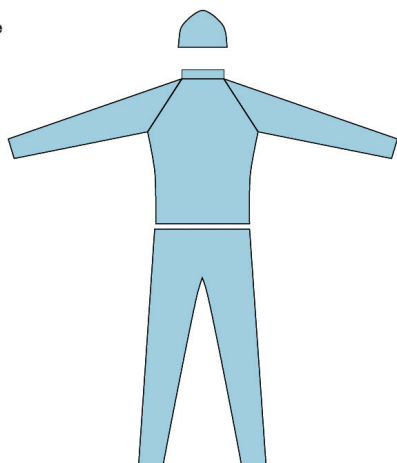
**PRO TEAM LICENSE** application shall include a PowerPoint presentation describing:

- Background
- Sponsors
- Athletes
- Pro Team Director
- Purpose and goals of the team
- Nationality of Team and Athletes
- Number of events the Team plans to participate in
- Design suit including size of all logos

### Team logo template

**Pro Team Logo Template**  
**Propotion: 5x2**  
**in .eps format**  
**(fill this box)**

### Race suit template



Digital files will be sent upon confirmed Pro Team Application

### Professional athlete photos



## APPENDIX 6 • SKI CLASSICS ATHLETE DECLARATION



<b>PRO TEAM</b>	<b>PRO TEAM ATHLETE NAME</b>	<b>PRO TEAM ATHLETE FIS CODE</b>
	<b>DATE OF BIRTH</b>	
<b>PRO TEAM DIRECTOR</b>	<b>EMERGENCY CONTACT NAME</b>	<b>EMERGENCY CONTACT PHONE NUMBER</b>

**AS A PART OF A SKI CLASSICS** long distance Pro Team, the Athlete (Pro Team and Athlete above below) acknowledge and recognize the importance and necessity of a clean and fair sport, including respect for the prohibition against doping and SKI CLASSICS requirement that all Pro Team members including the Athlete are clean, free from drugs and refrain from doping.

The Athlete hereby truthfully declares and certifies the following to the Pro Team:

- The Athlete will not, while the Athlete is a member of the Pro Team nor has for 24 months prior, use/used any forms of illegal or prohibited substances, preparations or drugs (including any prohibited substances as defined under the relevant anti-doping rules and regulations); and comply with all applicable anti-doping rules, regulations, policies and legislation such as e.g. FIS and WADA Anti-Doping Rules.

**PENALTIES** The main penalty from breaching the FIS WADA Anti-Doping rules will be handled and decided by WADA, FIS and the NSA. In addition, the Athlete acknowledges and accepts that the Athlete may be liable for payment of a penalty amounting up to EURO 100,000 (the "Penalty") decided by Ski Classics in case the Athlete has breached the Athlete Declaration and if Ski Classics has had brand or other costs/losses due to the violation of the Athlete Declaration. The athlete is also liable pay back all prize money received from the date of the first positive doping test. The Penalty will be with 30 days due, to be paid by the Athlete.

**WAIVERS** I understand that there are inherent risks involved in my participation in Ski Classics competitions, including, but not limited to, those associated with weather or competition conditions, equipment, other participants, and spectators. I fully assume the risks associated with my participation in Ski Classics competitions or activities. To the fullest extent permitted by law, I waive any and all claims that I, my heirs or legal representatives may have against Ski Classics, the organizers of any Ski Classics competitions or activities, or any Ski Classics sponsor, or against any director, officer, employee, authorized agent or independent contractor of any of them for death or personal injury and/or any loss or damage that I incur during my participation in any Ski Classics competition or activity. I waive any claim for any costs or losses that I incur in relation to a Ski Classics competition or other activity that has to be cancelled for reasons of safety or force majeure (as determined by Ski Classics or competition organizer), including, but not limited to, travel and accommodation costs.

**INSURANCE** I understand and agree that I must possess both sufficient liability and accident insurance for myself covering accident, recovery, and transport costs, including for competition-related risks, to an adequate extent when participating in any Ski Classics competitions or activities.

**ELIGIBILITY** I understand that I will be eligible to compete in any Ski Classics competitions only once I have provided Ski Classics with properly completed and signed copy of this declaration.

**RIGHTS** I accept that Ski Classics has all rights to free of charge use videos and photos including me, alone or in group, for their own, their partners as well as all kinds of promotions usage, for all future.

**GDPR** I accept that Ski Classics may use my personal data.

**DATE AND PLACE**

**SIGNATURE OF LEGAL GUARDIAN IN CASE OF MINORS**

**PRO TEAM ATHLETE SIGNATURE**

**PRO TEAM DIRECTOR SIGNATURE**

## APPENDIX 7 • BIB COLORS



### CHAMPION BIB

Yellow PMS neon 803



### SPRINT BIB

Green PMS neon 802



### YOUTH BIB

Pink PMS neon 806



### CLIMB BIB

Red PMS P 48-8 C  
Black PMS Black C



### SKI CLASSICS LOGO

Pantone Process Cyan C



## BAD GASTEIN PTT & CRITERIUM

### Race administration

Ski Classics  
racedirector@skiclassics.com

### Waxing facilities

Silvo Gstrein  
silvo.gstrein@gastein.com +43 664 3485920

### Accommodation

Sandra Kohlfürst  
sandra.kohlfuerst@gastein.com +43 643 23393565

## ENGADIN LA DIAGONELA

### Race administration

Jan Bill  
info@ladiagonela.ch +41 81 851 60 88

### Waxing facilities

TBD

### Accommodation

Madlaina Hui  
madlaina.hui@engadin.ch +41 81 830 08 49

## MARCIALONGA

### Race administration

Davide Stoffie  
info@marcialonga.it +39 0462 501 110

### Accommodation

Marta Vanzo  
marta@marcialonga.it +39 0462 501 110

## BEDŘICHOV SPRINT & JIZERSKA PADESATKA

### Race administration

elite@jiz50.cz

### Waxing facilities

elite@jiz50.cz

### Accommodation

jitka.svobodova@raul.cz

## VASALOPPET

### Race administration

Cathrine Mörk  
cathrine.mork@vasaloppet.se +46702546870

### Waxing facilities

N/A

### Accommodation

Cathrine Mörk  
cathrine.mork@vasaloppet.se +46702546870

## ORSA GRÖNKLITT ITT

### Race administration

Martin Holmstrand and Tomas Bredberg  
skiclassics@orsagronklitt.se

### Waxing facilities

Sören Sisell  
langdcentrum@orsagronklitt.se

### Accommodation

Booking centre Orsa Grönklitt +46 250 462 00

## BIRKEBEINERRENNET

### Race administration

Anne Lise Borgundvåg  
anne.lise@birkebeiner.no +47 905 43 382

### Waxing facilities

info@birkebeinerrennet.no +47 417 72 900

### Accommodation

Berit Nordseth  
berit@birkebeiner.no +47 954 68 709

## MARCIALONGA BODØ

### Race administration

Skjalg Dreyer  
post@maras.no +47 951 00 585

### Waxing facilities

Sport 1 Bodø – Sportshuset  
jorgen.bodo@sport1.no +47 980 26 830

### Accommodation

Jon Lauland Pettersen  
jon.pettersen@maras.no +47 979 75 497

## REISTADLØPET & SUMMIT 2 SENJA

### Race administration

Silje Storaas  
ceo@reistadlopet.no +47 41 75 44 20

### Waxing facilities

Silje Storaas  
ceo@reistadlopet.no +47 41 75 44 20

### Accommodation

Silje Storaas  
ceo@reistadlopet.no +47 41 75 44 20

## APPENDIX 9 • EVENT PRIZE MONEY

\*Preliminary event prize money - invoice details to be found in [Appendix 10](#)

### **BAD GASTEIN PTT**

Invoice to Bad Gastein

#### **WOMEN / MEN**

1. EUR 5.000
2. EUR 3.000
3. EUR 2.000

### **BAD GASTEIN CRITERIUM**

Invoice to Bad Gastein

#### **WOMEN / MEN**

1. EUR 5.000
2. EUR 2.000
3. EUR 1.200
4. EUR 700
5. EUR 600
6. EUR 500

### **ENGADIN LA DIAGONELA**

Invoice to La Diagonela

#### **WOMEN / MEN**

1. EUR 5.500
2. EUR 2.500
3. EUR 1.300
4. EUR 900
5. EUR 700
6. EUR 500

+ extra prize money

### **MARCIALONGA**

Invoice to Marcialonga

#### **WOMEN / MEN**

1. EUR 5.300
2. EUR 2.200
3. EUR 1.200
4. EUR 700
5. EUR 600
6. EUR 500

+ extra prize money

### **BEDŘICHOV SPRINT**

Invoice to Jizerská 50

#### **WOMEN / MEN**

1. EUR 4.000
2. EUR 1.600
3. EUR 960
4. EUR 640
5. EUR 480
6. EUR 320

### **JIZERSKÁ 50**

Invoice to Jizerská 50

#### **WOMEN / MEN**

1. EUR 3.000
2. EUR 1.400
3. EUR 750
4. EUR 500
5. EUR 250
6. EUR 100

+ extra prize money

### **ORSA GRÖNKLITT ITT**

Invoice to Orsa Grönlitt

#### **WOMEN / MEN**

1. EUR 5.000
2. EUR 2.500
3. EUR 1.500
4. EUR 800
5. EUR 650
6. EUR 550

### **VASALOPPET**

Invoice to Vasaloppet

#### **WOMEN / MEN**

1. SEK 102.000
2. SEK 50.000
3. SEK 30.000
4. SEK 20.000
5. SEK 15.000
6. SEK 10.000
7. SEK 9.000
8. SEK 8.000
9. SEK 7.000
10. SEK 6.000
11. SEK 5.000
12. SEK 4.000
13. SEK 3.000
14. SEK 2.000
15. SEK 1.000

+ extra prize money

### **BIRKEBEINERRENNET**

Invoice to Birkebeinerrennet

#### **WOMEN / MEN**

1. NOK 70.000
2. NOK 40.000
3. NOK 20.000
4. NOK 10.000
5. NOK 6.000
6. NOK 4.000

+ extra prize money

### **MARCIALONGA BODØ**

Invoice to Marcialonga Bodø

1. EUR 5.000
2. EUR 2.500
3. EUR 1.500
4. EUR 800
5. EUR 650
6. EUR 550

### **REISTADLØPET**

Invoice to Reistadløpet

#### **WOMEN / MEN**

1. EUR 5.000
2. EUR 2.000
3. EUR 1.200
4. EUR 700
5. EUR 600
6. EUR 500

### **SUMMIT 2 SENJA**

Invoice to Reistadløpet

#### **WOMEN / MEN**

1. EUR 5.000
2. EUR 2.000
3. EUR 1.200
4. EUR 700
5. EUR 600
6. EUR 500

## SC LONG DISTANCE SKIING AB

### INVOICE ADDRESS

SC Long Distance Skiing AB  
Humlegatan 2B  
263 38 Höganäs  
Sweden  
VAT: SE556901904401

Electronic PDF invoices shall be sent to:  
invoices@skiclassics.com

### POST ADDRESS

SC Long Distance Skiing AB  
Humlegatan 2B  
263 38 Höganäs  
Sweden

## BAD GASTEIN PTT & CRITERIUM

Kur- und Tourismusverband Bad Gastein  
Kaiser-Franz-Josef-Straße 27  
5640 Bad Gastein  
Austria  
VAT: ATU37782100

Electronic PDF invoices shall be sent to:  
roswitha.hauser@gastein.com

## ENGADIN LA DIAGONELA

Verein La Diagonela  
Quadratscha 18  
7503 Samedan  
Switzerland  
VAT: CHE498557848

Electronic PDF invoices shall be sent to:  
info@ladiagonela.ch

## MARCIALONGA

SCI CLUB MARCIALONGA  
Località Stalimen, 4  
38037 Predazzo TN  
VAT 01605290228  
Sara Deflorian  
+39 0462 501 110

Electronic PDF invoices shall be sent to:  
sara@marcialonga.it

## BEDŘICHOV SPRINT & JIZERSKA PADESATKA

Asociace Sportu Pro Radost, z.s.  
Privozní 1064/2A,  
170 00 Praha 7 - Holesovice  
Czech republic  
ICO (ID number): 05580421

Electronic PDF invoices shall be sent to:  
elite@jiz50.cz

## VASALOPPET

Vasaloppsföreningen Sälen-Mora  
EANMOT: 7368844015882  
Box 171  
831 22 Östersund  
Sweden  
Mark the invoice " Cathrine Mörk"

Electronic PDF invoices shall be sent to:  
vasaloppet@pdf.attest.nu

## ORSA GRÖNKLITT ITT

Orsa Grönlitt Friluftsanläggning AB  
Box 133  
794 22 Orsa  
Sweden  
VAT: 556098-7462  
Notice: Ski Classics

Mail for invoices: faktura@orsagronklitt.se

## BIRKEBEINERRENNET

Birken AS  
Fabrikkveien 2  
2450 Rena  
Norway  
VAT: NO912889912

Electronic PDF invoices shall be sent to:  
birken@faktura.poweroffice.net

## MARCIALONGA BODØ

Marcialonga Arctic Race AS  
VAT: 989 051 113 MVA  
EHF  
or

Electronic PDF invoices shall be sent to: 989051113@faktura.poweroffice.net

## REISTADLØPET & SUMMIT 2 SENJA

Reistadløpet AS  
Ole Reistads vei 116  
9325 Bardufoss  
Norway  
VAT: NO917388555

Electronic PDF invoices shall be sent to:  
reistadloepet.as@mg.regnskap.snn.no

## QCI - QUOTA COUNTRY INDEX

QCI are calculated from following parameters:

- Pro Team nationalities
- Pro Athletes nationalities
- Ski Classics overall prize money
- Event prize money
- Top 50 places
- Podium places
- Total points in Champion, Sprint and Climb competitions

Countries with QCI less than 10% are considered emerging.  
Countries with QCI higher than 10% are considered established.

### QUOTA COUNTRY INDEX FOR SEASON XVII

NORWAY	51,40%
SWEDEN	30,12%
FRANCE	3,88%
FINLAND	3,37%
ITALY	3,05%
GERMANY	2,78%
CZECH REPUBLIC	2,46%
SWITZERLAND	1,09%
AUSTRIA	0,72%
DENMARK	0,47%
AUSTRALIA	0,19%
SPAIN	0,15%
JAPAN	0,09%
GREAT BRITAIN	0,07%
NETHERLANDS	0,07%
USA	0,05%
ESTONIA	0,03%
SLOVENIA	0,01%