

SKI CLASSICS XVI
RULES AND REGULATIONS
ATHLETES & PRO TEAMS
2024/2025



V 16.2

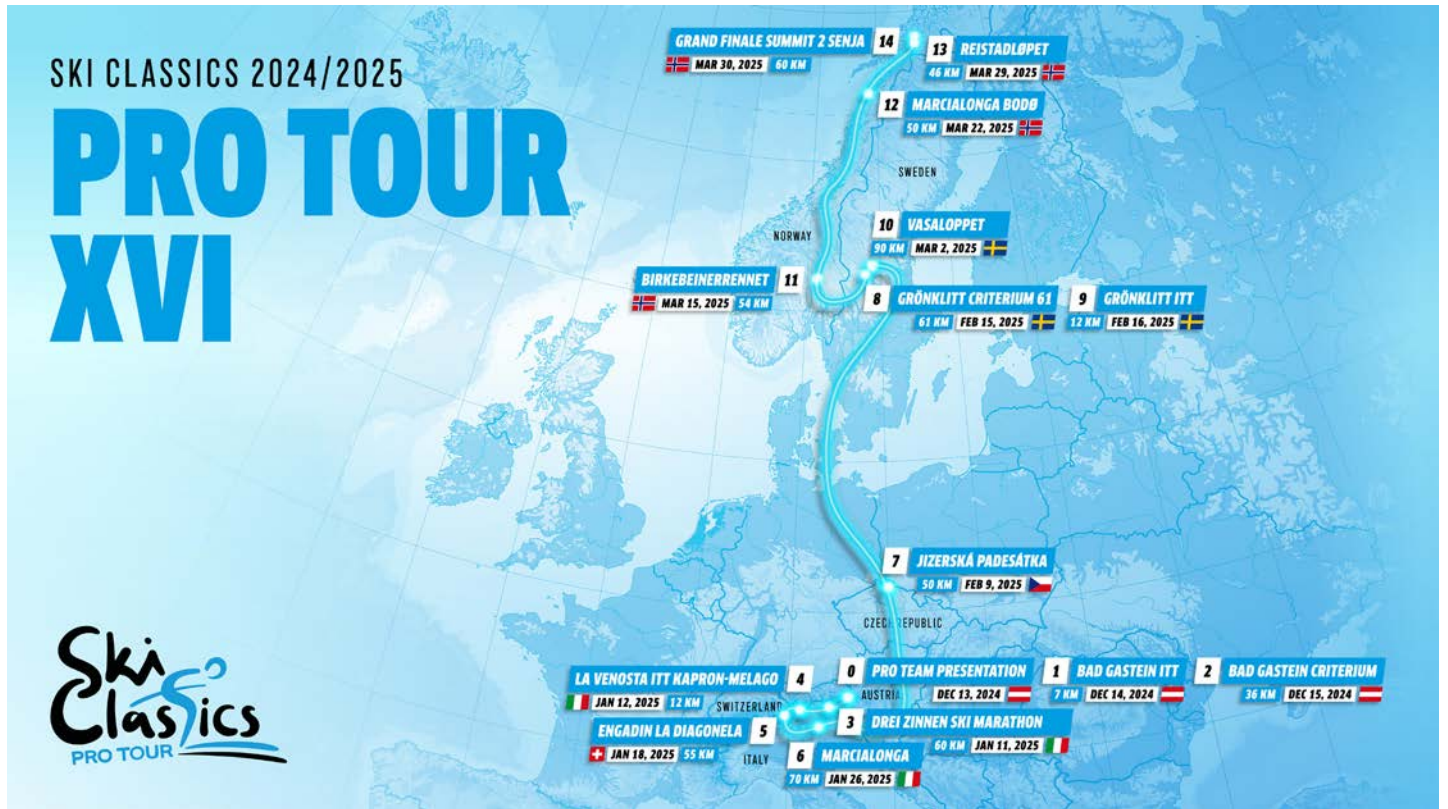
CONTENT

SEASON XVI TOUR MAP	03
COMPETITIONS	04
UPDATES IN ATHLETE AND PRO TEAM RULES	05
ATHLETES AND PRO TEAM RULES SEASON XVI	06
APPENDIX 1 SEASON XVI 2024/2025 CALENDAR.....	10
APPENDIX 2 POINTS TABLES AND EVENT POINT CATEGORIES.....	11
APPENDIX 3 PRIZE MONEY DISTRIBUTION	14
APPENDIX 4 FLOWER CEREMONY RUNNING ORDER	15
APPENDIX 5 PRO TEAM LICENSE APPLICATION	16
APPENDIX 6 SKI CLASSICS ATHLETE DECLARATION	17
APPENDIX 7 BIB COLORS	18
APPENDIX 8 EVENT CONTACTS.....	19
APPENDIX 9 EVENT PRIZE MONEY	20
APPENDIX 10 FINANCIAL DETAILS.....	21
APPENDIX 11 QCI.....	22

SEASON XVI TOUR MAP

SKI CLASSICS 2024/2025

PRO TOUR XVI



COMPETITIONS



CHAMPION COMPETITION

The yellow Champion bib is worn by the male and female athlete with the most current Champion points before each event. The overall winner is the athlete with most Champion points after the season in each gender. Most points collected from a single Ski Classics Challengers event is included.



SPRINT COMPETITION

The green Sprint bib is worn by the male and female with the most current Sprint points before each event. There are 0-2 sprints in the events. The seven fastest men and seven fastest women split times at the sprints will get points. The overall winner is the athlete with most sprint points after the season in each gender.



YOUTH COMPETITION

The pink Youth bib is given to the best male and female athlete of age 26 or below. The age of the athlete is determined by the year when the Ski Classics final of the season takes place. Points in the Champion competition are used. Athletes single best result from a Ski Classics Challengers event is included.



CLIMB COMPETITION

The squared patterned "Lumberjack" Climb bib is worn by the male and female with the most current Climb points before each event. There are 0-2 Climb checkpoints in the events. The seven fastest men and seven fastest women split times at the climb checkpoint will get points. The overall winner is the athlete with most Climb points after the season in each gender.



PRO TEAM COMPETITION

The Pro Team competition is determined by the total amount of Pro Team points and Pro Team Sprint points after the season. Pro Team points are distributed at each Pro Tour event based on; the Pro Team's collected Champion points from the Pro Team's best two male athletes and best two female athletes, the total Sprint and Climb points collected by the team, Champion points of the best Youth athlete in the team and the Champion points of the best athlete from an emerging country (QCI).

CUBS VETS

CUBS & VETS

The Cubs category are athletes with age under 22 years and ranging from the national lowest allowed age.

The Vets category are athletes with an age of 40 years or older.

The age of the athlete is determined by the year when the Ski Classics final of the season takes place.



GRAND CLASSICS

The Grand Classics events are Marcialonga, Jizerska Padesátka, Vasaloppet and Birkebeinerrennet. The athlete that wins all four events in one season completes a Grand Slam.



SKI CLASSICS RANKING

SC Ranking points are handed out in all Ski Classics events. Ranking points are based on the race time difference between a skier and the winner in their gender. The 12 best event ranking points during last 24 months are counted.



SKI CLASSICS HALL OF FAME

Ski Classics Hall of Fame consists of Ski Classics Legends, Pro Team Directors of the Season and other staff elected by Ski Classics.



EVENT OF THE SEASON

At the end of the season Pro Team athletes, staff and Ski Classics officials vote for the Event of the season. Awards will be handed out at the Ski Classics Final Gala.



SKI CLASSICS LEGENDS

In order to become a Legend, a skier needs to win 5 individual Pro Tour events or more. Wins in events that have been part of Ski Classics before the tour was created count for athletes that have been taking part in Ski Classics.



PRO TEAM DIRECTOR OF THE SEASON

During the season, and latest 25th March 2025, Pro Team Directors may send in nominees for Pro Team Director of the season. The award will be selected by Ski Classics and handed out to the Pro Team Director who has contributed to the development of the sport and the interest for Ski Classics.

UPDATES IN ATHLETE AND PRO TEAM RULES

UPDATES FROM SEASON XVI

PRO TEAM COMPETITION

The Pro Team competition is determined by the total amount of Pro Team points and Pro Team Sprint points after the season. Pro Team points are distributed at each Pro Tour event based on; the Pro Team's collected Champion points from the Pro Team's best two male athletes and best two female athletes, the total Sprint and Climb points collected by the team, Champion points of the best Youth athlete in the team and the Champion points of the best athlete from an emerging country (QC).

CUBS & VETS

The Cubs category are athletes with age under 22 years and ranging from the national lowest allowed age.

The Vets category are athletes with an age of 40 years or older.

PRO TEAM DIRECTOR OF THE SEASON

During the season, and latest 25th March 2025, Pro Team Directors may send in nominees for Pro Team Director of the season. The award will be selected by Ski Classics and handed out to the Pro Team Director who has contributed to the development of the sport and the interest for Ski Classics.

PRO TEAM LICENSE

To be granted a Pro Team License, the Pro Team must consist of

- minimum 6 and maximum 10 athletes
- including 3 athletes of both genders and
- maximum 8 athletes from established nations. See [Appendix 11](#).
- In addition, 2 Cubs, athletes with age under 22 years, may be counted on top of the 10 Pro Team Athletes. Cubs can be different skiers at each event. A Cub athlete may only represent one Pro Team each season.

The Pro Team name must include the word "Team".

Participation in Prologue weekend including Pro Team Presentation is mandatory for Pro Teams.

Pro Teams must register minimum three female athletes and three male athletes in minimum five events.

Pro Teams are provided with Pro Team service vests at the beginning of the season. One Pro Team Director + 9 Pro Team service vests. Service vests should be worn in service zones and other Pro Team areas.

REGISTRATIONS

A Pro Team can in September for the reduced registration fee register 1 or 2 Cubs entries for certain events. The name of the starting Cubs athletes shall be announced to Ski Classics latest 7 days prior each event. If Cub spots are not registered in September, normal late entry process and fees will apply. Maximum 2 Cubs per event.

In case of cancellation of an event due to Force Majeure registration fees are non-refundable.

Pro Teams are allowed to make name changes until 24 hours before start.

ATHLETE AGREEMENTS

The athlete agreement must contain; Start and end date of the agreement, termination clause including what to do if an athlete or Pro Team wants to end the agreement before end date. Antidoping clause including what happens if the athlete gets convicted breaking the antidoping rules. Emergency contact name and phone number outside the Pro Team.

Ski Classics recommend Pro Teams to have a documented plan to handle crisis.

POINTS

Ski Classics Pro Tour events may categorize as a 200p, 300p 500p event

Pro Team athletes must compete in the official registered Pro Team race suit design in order to compete in Ski Classics competitions at Pro Tour events. Official Pro Team race suits must be confirmed by Ski Classics before the Pro Team starts competing. Logos on race suits may differ between athletes. Design and logos on hats may differ between athletes within a Pro Team. Non-Pro Team athletes starting in Pro Team elite group should not compete in Official Pro Team race suits.

WILD CARDS

Wild card requests must be announced by Pro Team Directors by email to Ski Classics Race Director latest 24 hours prior TCM of each event.

SKI CLASSICS CHALLENGERS

Ski Classics Challengers events are presented at www.skiclassics.com and are categorized as either Challengers or Super Challengers.

Ski Classics Pro Team athletes will count their single best Ski Classics Challenger result, (to be clear; single best Challenger or Super Challenger points), in the Champion and Youth competitions.

PRIZE MONEY

Recommended to increase due to inflation.

POINTS TABLES

Updated with new points system and Super Challengers.

ATHLETE DECLARATION

Updated with more required fields.

ATHLETES AND PRO TEAM RULES SEASON XVI

GENERAL

1. Ski Classics Pro Tour season XVI is defined as May 1st 2024 until March 30th 2025. Ski Classics Challengers season XVI is defined as April 8th 2024 until March 24th 2025.

2. Ski Classics Rules and Regulations are valid on top of the FIS rules (ICR). Athletes must act in accordance to FIS (ICR) and Ski Classics rules and regulations.

- a** Ski Classics is responsible for and has the right to amend the Ski Classics rules and regulations at any time.
- b** Ski Classics has the right to act upon violations of the rules.
- c** Ski Classics representative is part of the Competition Jury.
- d** Ski Classics Pro Tour events are held in classic technique, all classic sub-techniques to be clear; double poling, double poling with kick, diagonal, herringbone and downhill position, are allowed at all parts of the event courses.
- e** In case of a Force Majeure incident Ski Classics has the sole right to; decide the outcome of the Ski Classics competitions, points and prize distribution; to rearrange result lists; to reestablish ongoing order of athletes during an event; pause and restart an event; or take other actions necessary.

PRO TEAMS

3. A Pro Team must have a specified owner. The owner can be a juridical- or physical person. The nationality of the Pro Team owner determines the nationality of the Pro Team.

If change of ownership of the Pro Team, information about the new owner must be e-mailed to racedirector@skiclassics.com and be approved by Ski Classics.

- a** A Pro Team must consist of:
 - minimum 6 and maximum 10 athletes
 - including 3 athletes of both genders and
 - maximum 8 athletes from established nations.See [Appendix 11](#).
 - In addition, 2 Cubs, athletes with age under 22 years, may be counted on top of the 10 Pro Team athletes. Cubs may be different skiers at each event. A Cub athlete may only represent one Pro Team each season.
- b** The Pro Team name must also include the word "Team".
- c** The owner of the Pro Team may change the name of the Pro Team if information emailed not later than September 15th to racedirector@skiclassics.com. Name change must be confirmed by Ski Classics to be valid.

PRO TEAM LICENSE

4. To be part of Ski Classics and to get points in the Pro Team competitions, the Pro Teams must hold a Pro Team License. The Pro Team License gives the right to register a Pro Team for the Pro Team competition.

- a** To apply for a Pro Team License, a presentation of the Pro Team including the information specified in [Appendix 5](#) shall be sent to racedirector@skiclassics.com.
- b** Previous Ski Classics season TOP 25 Pro Teams are guaranteed a Pro Team License:
 - if the wish to prolong is communicated by email to racedirector@skiclassics.com before July 1st 2024.
 - if minimum two athletes in the Pro Team from previous season remains in the Pro Team upcoming season.
- c** Pro Teams ranked 26-35 may apply for a new Pro Team License until July 1st 2024 according to [Appendix 5](#).

- d** An owner of a Pro Team with Pro Team License can change the ownership of the Pro Team and License. A change of ownership must include the existing Pro Team (name of the team) and athletes with signed agreement. The information about the new owner of the Pro Team and license must be e-mailed to racedirector@skiclassics.com and must be confirmed by Ski Classics for the change to be valid.
- e** Ski Classics has the sole right at own decision to hand out Pro Team Licenses. No Pro Team License will be granted a Pro Team with outstanding invoices from Ski Classics.
- f** Registered Pro Teams receive a unique Pro Team License ID.
- g** When a Pro Team License has been granted, the Pro Team shall be registered no later than September 15th 2024. By registering, the Pro Team accepts Ski Classics Rules and Regulations. Number of registered Ski Classics Pro Teams is limited to 35.
- h** Late Pro Team registrations may be accepted by Ski Classics.
- i** Pro Teams must register minimum three female athletes and three male athletes to minimum five events.
- j** Participation in Prologue weekend including Pro Team Presentation is mandatory for Pro Teams with a license.
- k** Pro Teams with a Pro Team License are provided with Pro Team service vests at the beginning of the season. One Pro Team Director + 9 Pro Team service vests. Service vests should be worn in service zones and other Pro Team areas.

ATHLETES

5. Athletes must be registered as a member of an official Ski Classics Pro Team latest 48 hours before an event and have a valid FIS-license in order to compete for Ski Classics points and Ski Classics prize money.

6. Pro Teams are not allowed to unregister or change athletes during the season.

7. Athletes are guaranteed start entries in each event if the following criteria are fulfilled:

- a** The athlete is registered in a Pro Team.
- b** The athlete has an active FIS license.
- c** The athlete is registered to each event through Ski Classics latest September 15th 2024. Athletes registered after September 15th 2024 will not be guaranteed a start place.
- d** An athlete will start in the elite group if the athlete has a Ski Classics ranking that ensures a spot in the elite group.

8. Ski Classics will invoice the Pro Team License fee after the registration has been completed. The fee is EUR 2500 + VAT for registration made until September 1st and EUR 3000 + VAT until September 15th 2024. Ski Classics may approve late Pro Team registrations after September 15th 2024, late entry license fee of EUR 3500 + VAT will apply. Pro Team License fee is not refundable and must be paid before the Pro Team may collect points in a Ski Classics event.

EVENT REGISTRATIONS

9. When registered to events through Ski Classics, athletes accept each event's participation rules.

- a** Registration of athletes to Ski Classics events are done when registering a Pro Team at www.skiclassics.com, registration is open from July 15th until September 15th 2024.
- b** 2024/2025 the registration fee is Euro 70 + VAT per athlete and event.
- c** Ski Classics will invoice the total registration fee of event registrations made through Ski Classics.

ATHLETES AND PRO TEAM RULES SEASON XVI

- d** A Pro Team can for the reduced registration fee register 1 or 2 Cubs entries for certain events until September 15th. The name of the starting Cubs athletes shall be announced to Ski Classics latest 7 days prior each event. If Cub spots are not registered in September, normal late entry process and fees will apply. Maximum 2 Cubs per event.
- e** Event registrations made through Ski Classics can only be transferred to Pro Team athletes within the same Pro Team. In case of cancellation of an event due to Force Majeure registration fees are non-refundable. If an replacement event is organized, then the Pro Team registrations are automatically transferred to the substituting event.
Pro Team Tempo is a non refundable event.
- f** Registrations after September 15th 2024 are made directly to each event according to each event's own rules, no start place is guaranteed and late registration fees may be different than in point b above.
- g** Pro Teams are allowed to make name changes until 24 hours before start.

ATHLETE DECLARATION & AGREEMENT

- 10.** Pro Team athletes must sign the Ski Classics Athlete Declaration in [Appendix 6](#).
 - a** The athlete declarations must be scanned and emailed to racedirector@skiclassics.com to be registered in Ski Classics.
 - b** The Pro Teams must have a signed athlete agreement with their registered athletes including that they accept the rules of Ski Classics and the athlete declaration in [Appendix 6](#). The athlete agreement must contain; Start and end date of the agreement, termination clause including what to do if an athlete or Pro Team wants to end the agreement before end date. Antidoping clause including what happens if the athlete gets convicted breaking the antidoping rules. Emergency contact name and phone number outside the Pro Team.

- 11.** Ski Classics recommend Pro Teams to have a documented plan to handle crisis.

POINTS

- 12.** Ski Classics points are awarded according to the points table in [Appendix 2](#).
 - a** Ski Classics Pro Tour events may categorize as a 200p, 300p or 500p event, where the number indicates the amount of Ski Classics points to winning athletes and which points table applicable at the event.
 - b** All registered Pro Team athletes finishing an Pro Tour event receive minimum one point in the Champion competition.
 - c** All Pro Team athletes starting and finishing within 20% of the winning time in both prologue weekend competitions will receive 50 individual bonus points in the Champion competition.
- 13.** Ski Classics may retain collected Ski Classics points if any violations of the rules occur. Protests and technical violation claims must be handed in to Ski Classics within 60 minutes after the winner finishes the event by handing over a written protest to the Jury, or emailing to racedirector@skiclassics.com. Protests are handled according to FIS ICR-rules. All results are final one hour after the event winner has finished and the Jury has checked protests. Exception will be made for doping violation cases.
- 14.** An athlete must finish the race in order to receive points

in the Champion, Sprint, Climb, Youth or Pro Team competition. Pro Team athletes must compete in the official registered Pro Team race suit design in order to compete in Ski Classics competitions at Pro Tour events. Official Pro Team race suits must be confirmed by Ski Classics before the Pro Team starts competing. Logos on race suits may differ between athletes. Design and logos on hats may differ between athletes within a Pro Team. Non-Pro Team athletes starting in Pro Team elite group should not compete in Official Pro Team race suits.

15. In the event of a dead-heat between two athletes the points for the places will be added together and divided by two (e.g. in a dead-heat for 1st and 2nd places, both athletes will receive $(300+255)/2 = 273$ points, $(200+170)/2 = 185$ points or $(100+90)/2 = 95$ points.)

16. If two or more athletes or Pro Teams score the same number of points after the last/final event in any competitions, the leader/winner is the athlete who has:

- a** The best results (i.e. most 1st, most 2nd and most 3rd places etc.) in the specific competition.
- b** If still equal in Climb or Sprint bib competitions, the final ranking in the Champion bib competition will be decisive.

If the athletes are still equal, two (or more) winners will be awarded. The prize money for the places will be added together and divided (e.g. in a dead-heat for 1st and 2nd places, both athletes will receive the prize money of the 1st and 2nd place divided in 2).

17. All Pro Team athletes may calculate the single best result from a Ski Classics Challengers event per season in the Champion and Youth bib competition. Challengers event points are handed out according to [Appendix 2](#).

SIDE EVENTS

- 18.** All Ski Classics athletes shall be available for the media. Points may be retained from the Pro Team if athletes are not available for:
 - a** Short comments for media on event day, prior to start.
 - b** Pro Team athletes and Pro Team Director must be present at press conference / pre-race interviews if they are invited.
 - c** Available for questions from media immediately after finish and after the flower ceremony.
 - d** Top 3 finishing men and women + bib holders must be present in Pro Team Area until flower ceremony is completed.
 - e** If there is a Pro Team presentation before an event, the Pro Team Director and athletes must be present.

RACE

- 19.** Each Pro Team participating in a Ski Classics event shall have a representative present at the event's Team Captains Meeting (TCM) on the day prior to the race. The meeting is held at 16:30 local time unless otherwise stated from the race organizer.
 - a** Pro Teams must collect bibs 11.00-13.00 local time race day -1 in Ski Classics truck or other informed location.
- 20.** For Ski Classics athletes it is mandatory to wear provided color bibs and GPS devices if selected. GPS devices must be handed back to organiser or Ski Classics trailer immediately after the race.
- 21.** If a color bib leader doesn't start at an event or leads more than one bib, the highest ranked (1. Champ, 2. Sprint, 3. Climb, 4.

ATHLETES AND PRO TEAM RULES SEASON XVI

Youth) available athlete in each bib competition shall wear the bib. If an athlete is leading one bib competition he or she shall wear that bib regardless of the bib ranking.

22. Athletes wearing Ski Classics color bibs must start in the front row of the start field. Events may let the last edition event winner start in the front row.

WILD CARDS

23. During Ski Classics Pro Tour events where the initial intermediate Sprint/Climb point is within a short distance from the start, the Ski Classics Race Director holds exclusive right to issue wild cards for athletes in top of current Sprint/Climb competition standings and previous season total Sprint/Climb competition.

The wild card guarantees a better starting position compared to the athletes Ski Classics ranking for the specific event.

Wild card requests must be announced by Pro Team Directors by email to Ski Classics Race Director latest 24 hours prior TCM of each event.

The Ski Classics Race Director has the exclusive right to issue wild cards for athletes anticipated to surpass their current Ski Classics ranking.

24. Only finishing athletes are allowed in the finish area.

SERVICE ZONES

25. If service zones are assigned at an event, following rules apply:

- a** Athletes may only receive service of drinkbelts and/or feeding (drinks, gels, bars etc.) in assigned service zones. Athletes may throw drinkbelts to staff outside of service zones.
- b** Replacement service for broken ski equipment is allowed in and outside of service zones.
- c** Trash shall only be thrown within service zones and if dedicated waste zones.
- d** Pro Team staff may only stand on each side of the race track, not in between skiers in the tracks.
- e** Pro Team Service Vests should be worn in service zones and other Pro Team areas.
- f** Violation of these rules may lead to monetary fines and with drawn points.

COLD WEATHER PRECAUTIONS

26. Passages from FIS ICR (2024):

388.1.1 There are three main factors to be considered by the Jury regarding cold weather safety: the temperature; the duration of the exposure; and, the clothing and other protection against cold weather. These factors together with any other relevant information such as the "wind chill factor" must be taken into consideration when a decision is made regarding cold weather.

388.2.1 If the temperature level is forecast to be between minus 15 °C and minus 25 °C at any point on the course, recommendations regarding cold weather protection should be made available to the competitors. Under such conditions it is the responsibility of the competitors to seek the information and to follow the recommendations given by the organiser.

388.3.1 If the temperature in a major portion of the course is minus 25 °C or below, the competition shall be delayed or cancelled.

27. If an event is held under 388.2.1 conditions, the jury may decide on precautions such as allowing athletes to wear isolation clothing covering the race bib. Precautions shall if possible be communicated latest

at TCM.

- a** Heating soles, socks, and gloves are allowed in all conditions.

GAMBLING ON COMPETITIONS

28. Passages from the FIS ICR (2024):

205.8 Gambling on Competitions

Competitors, trainers, team officials and technical officials are prohibited from betting on the outcome of competitions in which they are involved.

SKI CLASSICS CHALLENGERS

29. Ski Classics Challengers are categorized as either Challengers or Super Challengers. Ski Classics Challengers events are presented at www.skiclassics.com. The list of Challengers events will be updated continuously through the season.

- a** Challengers events are held in cross country or roller skiing, in classic or free technique.
- b** Registrations to Challengers events are made directly to the event.
- c** Challengers event organization is responsible for distribution of prize money.
- d** Ski Classics Challengers points are distributed according to [Appendix 2](#).
- e** Ski Classics Pro Team athletes will count their single best Ski Classics Challenger result, (to be clear; single best Challenger or Super Challenger points), in the Champion and Youth competitions.

SC RANKING

30. The SC Ranking is the international ranking system for long distance skiing including athletes of both genders and any level of performance.

- a** At each Pro Tour and Challengers event, SC Ranking points are distributed to all participants based on the percentual time a participant is behind the winning time in respective gender.
- b** The winner of each gender at Pro Tour event receives 2.000.000 points and at Challenger events 500.000 points.
- c** On top of point 30b, at Pro Tour events the winner receives 200.000 bonus points, 2nd placed 100.000 bonus points and 3rd placed 40.000 bonus points.
- d** SC Ranking ranks athletes on their 12 best event points the latest 24 months. SC Ranking is updated every Monday.

START PROCEDURES

31. Pro Team Tempo (PTT)

- a** The Pro Team Tempo is organized as an interval start competition with block starts, one Pro Team starting at a time in reversed order according to the Pro Team ranking of previous season with the top 5 ranked teams spread out in the starting field. The gap between the blocks are 4 minutes. Male Pro Team athletes starts 30 seconds ahead of female Pro Team athletes.
- b** Male Pro Team athletes who are caught up by female Pro Team athletes must leave a gap to the females and stay minimum 20 meters behind.
- c** Pro Teams must ease for passing Pro Teams and not interfere with the passing Pro Teams chosen racing line.
- d** The finishing time of the 2nd ranked male and 2nd ranked female of the team will count for the classification. The total time decides the result of the Pro Team Tempo. The Pro Team Tempo points are handed out according to points table, [Appendix 2](#). In the Pro Team Tempo, minimum 2 athletes per gender per team must start in order for the Pro Team to receive Pro Team points.
- e** Pro Teams that have less than two male and two female athletes on the start may be not permitted to start, or decided to start separately from the Pro Team start procedure.

ATHLETES AND PRO TEAM RULES SEASON XVI

f The Pro Team Tempo can be arranged as a interval start relay competition.

32. Individual Time Trial (ITT)

Separated Women and Men Individual with recommended 20-60 seconds interval start. Ski Classics has the right to make the seeding for Pro Team athletes.

33. Mass Start

Separated Women and Men Competition mass start with seeding according to the current SC ranking.

34. Kilometer Zero

Gliding start from fixed start positions. Athletes must remain their position in the start field until the leading skidoo gives the start signal.

SKI CLASSICS - GRAND CLASSICS

35. Ski Classics Grand Classics events for Season XVI are Marcialonga, Jizerská 50, Vasaloppet and Birkebeinerrennet.

36. Grand Slam

The Pro Team athlete who wins all four Grand Classics events in one season completes a Grand Slam. The Grand Slam net prize money fund specified in [Appendix 3](#), will be distributed according to following conditions:

- a** One male Pro Team athlete and/or one female Pro Team athlete wins all four Grand Classics events in one season.
- b** All wins have been achieved according to good sportsmanship. Ski Classics reserves the right to withhold the prize money fund in full or partly, if suspected or proven misconduct by the winning athlete, Pro Team other athletes or Pro Teams (e.g. co-athletes of same Pro Team intentionally lose an event).
- c** If two Pro Team athletes complete the Grand Slam in one season, the prize money fund will be divided equally between the two athletes.
- d** If one or more Grand Classics events are moved to other venues, replaced or in any way modified from the original race track it will not be categorized as a Grand Classics event, and hence, the Grand Classics prize money fund will not be distributed.

PRIZE MONEY

37. Ski Classics athletes must participate in the flower ceremony and price giving ceremony of the event (if arranged) in order to receive event prize money. Ski Classics recommends the organizing committee a minimum prize money fund of EUR 22.000+VAT for single-event weekends, EUR 33.000+VAT for double-event weekends and EUR 33.000+VAT for Grand Classics events.

38. Event prize money is distributed by each event and Pro Teams shall follow the instructions given by each event organization. Prize money amounts in [Appendix 9](#) and invoice information in [Appendix 10](#). Invoices shall be sent latest May 31st, 2025.

39. Ski Classics Pro Teams and athletes must participate in the prize ceremony at the Ski Classics Final in order to receive overall season prize money. If an athlete cannot participate in the Ski Classics Final due to illness and/or reasons beyond the athlete's control, the athlete must submit documentation stating clearly the reasons for not attending. The document must be certified by a medical doctor and submitted to Ski Classics in order for the athlete's points to be valid for the overall results. Overall prize money is distributed according to [Appendix 3](#).

40. Overall season prize money must be invoiced Ski Classics latest May 31st, 2025.

- a** Invoices shall be sent by a registered company, owned either by Pro Team or individual Pro Team athlete. The company must be registered in the home country of the Pro Team or Pro Team athlete and shall apply and follow the rules and regulations regarding tax and VAT of this country.
- b** Prize money shall be invoiced in EUR without VAT applied.
- c** Invoices shall include the following information:

- Company name
- Invoice date
- Invoice number
- Due date with payment terms of 30 days
- Amount of prize money (EUR)
- IBAN number of the bank account
- BIC number of the bank account
- Registration/VAT number of the company

AND

- If the company is registered in an EU country the following text must be written on the invoice "Reverse charge on VAT".

OR

- If the company is registered in a non-EU country the following text must be written on the invoice "Article 44 VAT directive".

41. Ski Classics official Pro Teams shall have the Ski Classics Pro Team logo on their homepage, hyperlinked to www.skiclassics.com.

42. Ski Classics and the Events part of Ski Classics, may use photos and videos of registered Pro Teams and athletes in order to market Ski Classics without prior permission or remuneration.

43. Pro Teams are encouraged to share Ski Classics content in social media and other channels, and to share their own content and news with Ski Classics by email to: press@skiclassics.com.

44. Pro Teams are allowed to use up to 30 seconds from the event highlight created by Ski Classics, for their own social media usage.

45. Ski Classics Pro Teams are allowed to use Ski Classics Official Pro Team logo for their own marketing purposes.

*Preliminary start times

Ski Classics Prologue Weekend

Event 0 – Ski Classics

Pro Team Presentation

Bad Gastein, Austria
Friday December 13th 2024
Start time: 17:00 CET

Ski Classics Prologue Weekend

Event 1 – Bad Gastein ITT

Bad Gastein, Austria
Saturday December 14th 2024
7 km
Start times:
Women: 08:30 CET
Men: TBC

Ski Classics Prologue Weekend

Event 2 – Bad Gastein Criterium

Bad Gastein, Austria
Sunday December 14th 2024
35 km
Start times:
Women: 09:00 CET
Men: 08:35 CET

Event 3 – Drei Zinnen Ski Marathon

Sexten - Villabassa, Italy
Saturday January 11th 2025
60 km
Start times:
Women: 09:05 CET
Men: 09:00 CET

Event 4 – La Venosta ITT

Val Venosta, Italy
Sunday January 12th 2025
12 km
Start times:
Women: 08:00 CET
Men: 09:30 CET

Event 5 – Engadin La Diagonela

Pontresina - Zuoz, Switzerland
Saturday January 18th 2025
56 km
Start times:
Women: 10:00 CET
Men: 09:55 CET

Grand Classics

Event 6 – Marcialonga

Moena-Cavalese, Italy
Sunday January 26th 2025
70 km
Start times:
Women: 08:05 CET
Men: 08:00 CET

Grand Classics

Event 7 – Jizerská Padesátka

Bedrichov, Czech Republic
Sunday February 9th 2025
50km
Start times:
Women: 08:00 CET
Men: 08:30 CET

Event 8 – Grönklitt Criterium 61

Orsa Grönklitt, Sweden
Saturday February 15th 2025
61km
Start times:
Women: 09:35 CET
Men: 09:30 CET

Event 9 – Grönklitt ITT

Orsa Grönklitt, Sweden
Sunday February 16th 2025
13 km
Start times:
Women: 08:00 CET
Men: 09:00 CET

Grand Classics

Event 10 – Vasaloppet

Sälen - Mora, Sweden
Sunday March 2nd 2025
90 km
Start times:
Women: 08:00 CET
Men: 08:00 CET

Grand Classics

Event 11 – Birkebeinerrennet

Rena - Lillehammer, Norway
Saturday March 15th 2025
54 km
Start times:
Women: 08:00 CET
Men: 07:45 CET

Event 12 – Marcialonga Bodø

Bodø, Norway
Saturday March 22nd 2025
50 km
Start times:
Women: 10:20 CET
Men: 10:15 CET

Event 13 – Reistadløpet

Setermoen - Bardufoss, Norway
Saturday March 29th 2025
40 km
Start times:
Women: 10:05 CET
Men: 10:00 CET

Event 14 – Grand Finale Summit 2 Senja

Bardufoss - Finnsnes, Norway
Sunday March 30th 2025
60 km
Start times:
Women: 08:35 CET
Men: 08:30 CET

APPENDIX 2A • POINTS TABLE 1/2

PRO TOUR 500 GRAND CLASSICS	
CHAMPION	
POSITION	POINTS
#1	500
#2	440
#3	400
#4	370
#5	340
#6	310
#7	290
#8	270
#9	250
#10	230
#11	210
#12	190
#13	170
#14	165
#15	160
#16	155
#17	150
#18	145
#19	140
#20	137
#21	134
#22	131
#23	128
#24	125
#25	122
#26	119
#27	116
#28	113
#29	110
#30	107
#31	104
#32	101
#33	98
#34	95
#35	92
#36	89
#37	86
#38	84
#39	82
#40	80
#41	78
#42	76
#43	74
#44	72
#45	70
#46	68
#47	66
#48	64
#49	62
#50	60
#51	58
#52	56
#53	54
#54	52
#55	50
#56	48
#57	46
#58	44
#59	42
#60	40
#61	38
#62	36
#63	34
#64	32
#65	30
#66	28
#67	26
#68	24
#69	22
#70	20
#71	18
#72	16
#73	14
#74	12
#75	10
#76	8
#77	6
#78	4
#79	2
≥ #80	1

PRO TOUR 300	
CHAMPION	
POSITION	POINTS
#1	300
#2	260
#3	230
#4	200
#5	180
#6	175
#7	170
#8	165
#9	160
#10	155
#11	152
#12	149
#13	146
#14	143
#15	140
#16	137
#17	134
#18	131
#19	128
#20	125
#21	122
#22	119
#23	116
#24	113
#25	110
#26	107
#27	104
#28	101
#29	98
#30	95
#31	92
#32	89
#33	86
#34	83
#35	80
#36	77
#37	74
#38	71
#39	68
#40	65
#41	62
#42	59
#43	56
#44	53
#45	50
#46	47
#47	44
#48	41
#49	38
#50	35
#51	33
#52	31
#53	29
#54	27
#55	26
#56	25
#57	24
#58	23
#59	22
#60	21
#61	20
#62	19
#63	18
#64	17
#65	16
#66	15
#67	14
#68	13
#69	12
#70	11
#71	10
#72	9
#73	8
#74	7
#75	6
#76	5
#77	4
#78	3
#79	2
≥ #80	1

ITT 200	
CHAMPION	
POSITION	POINTS
#1	200
#2	195
#3	190
#4	185
#5	180
#6	175
#7	170
#8	165
#9	160
#10	155
#11	152
#12	149
#13	146
#14	143
#15	140
#16	137
#17	134
#18	131
#19	128
#20	125
#21	122
#22	119
#23	116
#24	113
#25	110
#26	107
#27	104
#28	101
#29	98
#30	95
#31	92
#32	89
#33	86
#34	83
#35	80
#36	77
#37	74
#38	71
#39	68
#40	65
#41	62
#42	59
#43	56
#44	53
#45	50
#46	47
#47	44
#48	41
#49	38
#50	35
#51	33
#52	31
#53	29
#54	27
#55	26
#56	25
#57	24
#58	23
#59	22
#60	21
#61	20
#62	19
#63	18
#64	17
#65	16
#66	15
#67	14
#68	13
#69	12
#70	11
#71	10
#72	9
#73	8
#74	7
#75	6
#76	5
#77	4
#78	3
#79	2
≥ #80	1

PRO TEAM COMPETITION	
POSITION	POINTS
#1	200
#2	180
#3	160
#4	140
#5	120
#6	100
#7	90
#8	85
#9	80
#10	75
#11	70
#12	65
#13	60
#14	55
#15	50
#16	45
#17	40
#18	35
#19	32
#20	30
#21	28
#22	26
#23	24
#24	22
#25	20
#26	18
#27	16
#28	14
#29	12
#30	10
#31	9
#32	8
#33	7
#34	6
#35	5

PRO TEAM SPRINT	
POSITION	POINTS
MEN	
#1	30
#2	23
#3	16
#4	12
#5	9
#6	6
#7	4
WOMEN	
#1	30
#2	23
#3	16
#4	12
#5	9
#6	6
#7	4

APPENDIX 2A • POINTS TABLE 2/2

SPRINT		
MEN	POINTS	
POSITION	100%	50%
#1	30 p	15 p
#2	23 p	12 p
#3	16 p	8 p
#4	12 p	6 p
#5	9 p	4 p
#6	6 p	3 p
#7	4 p	2 p
WOMEN		
#1	30 p	15 p
#2	23 p	12 p
#3	16 p	8 p
#4	12 p	6 p
#5	9 p	4 p
#6	6 p	3 p
#7	4 p	2 p

CLIMB			
MEN	POINTS		
POSITION	ICONIC	100%	50%
#1	45 p	30 p	15 p
#2	35 p	23 p	12 p
#3	24 p	16 p	8 p
#4	18 p	12 p	6 p
#5	13 p	9 p	4 p
#6	9 p	6 p	3 p
#7	6 p	4 p	2 p
WOMEN			
#1	45 p	30 p	15 p
#2	35 p	23 p	12 p
#3	24 p	16 p	8 p
#4	18 p	12 p	6 p
#5	13 p	9 p	4 p
#6	9 p	6 p	3 p
#7	6 p	4 p	2 p

SUPER CHALLENGERS	
POSITION	POINTS
# 1	100
# 2	97
# 3	95
# 4	93
# 5	91
# 6	89
# 7	87
# 8	85
# 9	83
# 10	81
# 11	79
# 12	77
# 13	75
# 14	73
# 15	71
# 16	69
# 17	67
# 18	65
# 19	63
# 20	61
# 21	59
# 22	57
# 23	55
# 24	53
# 25	51
# 26	49
# 27	47
# 28	45
# 29	43
# 30	41
# 31	39
# 32	37
# 33	35
# 34	33
# 35	31
# 36	29
# 37	27
# 38	25
# 39	23
# 40	21
# 41	20
# 42	19
# 43	18
# 44	17
# 45	16
# 46	15
# 47	14
# 48	13
# 49	12
# 50	11
# 51	10
# 52	9
# 53	8
# 54	7
# 55	6
# 56	5
# 57	4
# 58	3
# 59	2
≥ # 60	1

CHALLENGERS	
POSITION	POINTS
# 1	50
# 2	49
# 3	48
# 4	47
# 5	46
# 6	45
# 7	44
# 8	43
# 9	42
# 10	41
# 11	40
# 12	39
# 13	38
# 14	37
# 15	36
# 16	35
# 17	34
# 18	33
# 19	32
# 20	31
# 21	30
# 22	29
# 23	28
# 24	27
# 25	26
# 26	25
# 27	24
# 28	23
# 29	22
# 30	21
# 31	20
# 32	19
# 33	18
# 34	17
# 35	16
# 36	15
# 37	14
# 38	13
# 39	12
# 40	11
# 41	10
# 42	9
# 43	8
# 44	7
# 45	6
# 46	5
# 47	4
# 48	3
# 49	2
≥ # 50	1

*Preliminary schedule

Event 1 – Bad Gastein Individual Prologue

Bad Gastein, Austria
200p

Event 2 – Bad Gastein Criterium

Bad Gastein, Austria
300p
100% Sprint x 2
50% Climb x 2

Event 3 – Pustertaler Ski Marathon

Sexten - Villabassa, Italy
300p
100% Sprint Nordic Arena
100% Climb Cimabanche

Event 4 – La Venosta ITT

Val Venosta, Italy
200p
100% Climb

Event 5 – Engadin La Diagonela

St Moritz, Switzerland
300p
100% Sprint Samedan
100% Sprint St Moritz

Event 6 – Marcialonga

Trentino, Italy
GRAND CLASSICS
500p
100% Sprint Canazei
100% Sprint Predazzo
Iconic Climb Cascata

Event 7 – Jizerská Padesátka

Bedrichov, Czech Republic
GRAND CLASSICS
500p
100% Sprint Jizerka
100% Climb Na Kneipe
100% Climb Smědava

Event 8 – Grönklitt Criterium

Orsa Grönklitt, Sweden
300p
100% Climb
100% Sprint

Event 9 – Grönklitt ITT

Orsa Grönklitt, Sweden
200p
50% Sprint
50% Climb

Event 10 – Vasaloppet

Sälen - Mora, Sweden
GRAND CLASSICS
500p
100% Climb Högsta Punkten
100% Sprint Smågan
100% Sprint Evertsberg

Event 11 – Birkebeinerrennet

Rena - Lillehammer, Norway
GRAND CLASSICS
500p
Iconic Climb Raudfjellet
100% Climb Midtfjellet

Event 12 – Marcialonga Bodø

Bodø, Norway
300p
100% Sprint
100% Climb Junkerfjellet

Event 13 – Reistadløpet

Setermoen - Bardufoss, Norway
300p
100% Pro Team Sprint Storløyra
Iconic Climb Orta

Event 14 – Grand Finale Summit 2 Senja

Bardufoss - Finnsnes, Norway
300p
100% Pro Team Sprint Johannesmyra
Iconic Climb Magdaskaret

APPENDIX 3 • PRIZE MONEY DISTRIBUTION

TOTAL PRIZE SUM: EUR 200.000



CHAMPION COMPETITION WOMEN	
POSITION	PERCENTAGE
1	13.3%
2	6.3%
3	3.7%
4	2.5%
5	1.3%



CHAMPION COMPETITION MEN	
POSITION	PERCENTAGE
1	13.3%
2	6.3%
3	3.7%
4	2.5%
5	1.3%



PRO TEAM COMPETITION	
POSITION	PERCENTAGE
1	7.5%
2	4.2%
3	3.2%
4	2.5%
5	2.0%
6	1.6%
7	1.4%



SPRINT COMPETITION WOMEN	
POSITION	PERCENTAGE
1	3.3%
2	1.1%
3	0.7%



SPRINT COMPETITION MEN	
POSITION	PERCENTAGE
1	3.3%
2	1.1%
3	0.7%



GRAND SLAM	EUR 100 000
JACKPOT CONTRIBUTION	1.0%



CLIMB COMPETITION WOMEN	
POSITION	PERCENTAGE
1	3.3%
2	1.1 %
3	0.7%



CLIMB COMPETITION MEN	
POSITION	PERCENTAGE
1	3.3%
2	1.1 %
3	0.7%



YOUTH COMPETITION WOMEN	
POSITION	PERCENTAGE
1	1.0%



YOUTH COMPETITION MEN	
POSITION	PERCENTAGE
1	1.0%

FLOWER CEREMONY STAGE

If possible, the stage for the flower ceremony should be located in front of both spectators and photographers and next to the Mixed Zone - close to the TV interview positions. The exact location is to be coordinated with TV Director.

FLOWER CEREMONY RUNNING ORDER

The Flower Ceremony will be executed immediately after each race finish. It will follow a standardized ritual by 1-2 designees of the OC and a host as below, Ski Classics Race Director will give the speaker official results and holders of color bibs before ceremony. Men and women flower ceremonies may be combined.

- Introduction with the Ski Classics anthem
- Pro Team Director of the Pro Team collecting most Pro Team points at the event + *Photo session*

COLOR BIBS

Bibs are put on and female bib holder waits for male bib holder to join the stage.

- Pink Youth color bib woman/man + *Photo session*
- Green Sprint color bib woman/man + *Photo session*
- Lumberjack Climb color bib woman/man + *Photo session*
- Yellow Champion color bib woman/man + *Photo session*

WOMEN

- Ranking of the day 1-3. Speaker announcing top 3 athletes in order 3rd–2nd–1st,
- Flower ceremony 3rd–2nd–1st
- National anthem of winner
- Sparkeling drink pop-out
- Photo session top 3 (during photo session with background music)
- Champagne shower
- Top 3 leaving stage.

MEN

- Ranking of the day 1-3. Speaker announcing top 3 athletes in order 3rd–2nd–1st,
- Flower ceremony 3rd–2nd–1st
- National anthem of winner
- Sparkeling drink pop-out
- Photo session top 3 (during photo session with background music)
- Champagne shower
- Top 3 leaving stage
- Photo session winner Women and winner Men combined
- End vignette Ski Classics anthem

APPENDIX 5 • LICENSE APPLICATION TEMPLATE

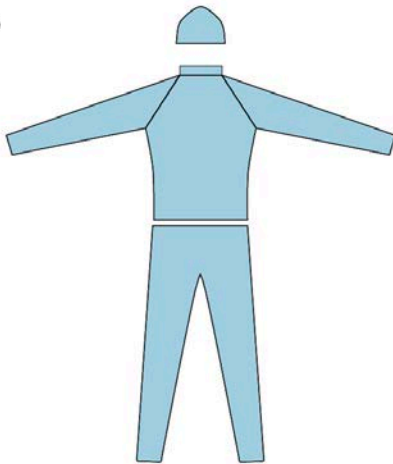
PRO TEAM LICENSE application shall include a PowerPoint presentation describing:

- Background
- Sponsors
- Athletes
- Pro Team Director
- Purpose and goals of the team
- Nationality of Team and Athletes
- Number of events the Team plans to participate in

Team logo template

Pro Team Logo Template
Proportion: 5x2
in .eps format
(fill this box)

Race suit template



Digital files will be sent upon confirmed Pro Team Application

Professional athlete photos



APPENDIX 6 • SKI CLASSICS ATHLETE DECLARATION



PRO TEAM	PRO TEAM ATHLETE NAME	PRO TEAM ATHLETE FIS CODE
<input type="text"/>	<input type="text"/>	<input type="text"/>
PRO TEAM DIRECTOR	DATE OF BIRTH	EMERGENCY CONTACT NAME
<input type="text"/>	<input type="text"/>	<input type="text"/>
		EMERGENCY CONTACT PHONE NUMBER
		<input type="text"/>

AS A PART OF A SKI CLASSICS long distance Pro Team, the Athlete (Pro Team and Athlete above below) acknowledge and recognize the importance and necessity of a clean and fair sport, including respect for the prohibition against doping and SKI CLASSICS requirement that all Pro Team members including the Athlete are clean, free from drugs and refrain from doping. The Athlete hereby truthfully declares and certifies the following to the Pro Team:

- The Athlete will not, while the Athlete is a member of the Pro Team nor has for 24 months prior, use/used any forms of illegal or prohibited substances, preparations or drugs (including any prohibited substances as defined under the relevant anti-doping rules and regulations); and comply with all applicable anti-doping rules, regulations, policies and legislation such as e.g. FIS and WADA Anti-Doping Rules.
- The Athlete acknowledges and accepts furthermore that the Athlete is liable for payment of a penalty amounting up to EURO 100,000 (the "Penalty") in case the Athlete has breached the Athlete Declaration, as compensation for all/part of the costs/losses that the Ski Classics or/and the Pro Team will or may incur due to the violation of the Athlete Declaration. The Penalty will be with 30 days due, to be paid by the Athlete.

WAIVERS I understand that there are inherent risks involved in my participation in Ski Classics competitions, including, but not limited to, those associated with weather or competition conditions, equipment, other participants, and spectators. I fully assume the risks associated with my participation in Ski Classics competitions or activities. To the fullest extent permitted by law, I waive any and all claims that I, my heirs or legal representatives may have against Ski Classics, the organisers of any Ski Classics competitions or activities, or any Ski Classics sponsor, or against any director, officer, employee, authorised agent or independent contractor of any of them for death or personal injury and/or any loss or damage that I incur during my participation in any Ski Classics competition or activity. I waive any claim for any costs or losses that I incur in relation to a Ski Classics competition or other activity that has to be cancelled for reasons of safety or force majeure (as determined by Ski Classics or competition organiser), including, but not limited to, travel and accommodation costs.

INSURANCE I understand and agree that I must possess both sufficient liability and accident insurance for myself covering accident, recovery, and transport costs, including for competition-related risks, to an adequate extent when participating in any Ski Classics competitions or activities.

ELIGIBILITY I understand that I will be eligible to compete in any Ski Classics competitions only once I have provided Ski Classics with properly completed and signed copy of this declaration.

RIGHTS I accept that Ski Classics has all rights to free of charge use videos and photos including me, alone or in group, for their own, their partners as well as all kinds of promotions usage, for all future.

GDPR I accept that Ski Classics may use my personal data.

DATE AND PLACE

SIGNATURE OF LEGAL GUARDIAN IN CASE OF MINORS

PRO TEAM ATHLETE SIGNATURE

PRO TEAM DIRECTOR SIGNATURE

APPENDIX 7 • BIB COLORS



CHAMPION BIB
Yellow PMS neon 803



SPRINT BIB
Green PMS neon 802



YOUTH BIB
Pink PMS neon 806



CLIMB BIB
Red PMS P 48-8 C
Black PMS Black C



SKI CLASSICS LOGO
Pantone Process Cyan C

BAD GASTEIN INDIVIDUAL PROLOGUE & CRITERIUM

Race administration

Ski Classics
racedirector@skiclassics.com

Waxing facilities

Silvo Gstrein
silvo.gstrein@gastein.com +43 664 3485920

Accommodation

Sandra Kohlfürst
sandra.kohlfuerst@gastein.com +43 643 23393533

DREI ZINNEN SKI MARATHON

Race administration

Ski Classics
racedirector@skiclassics.com

Waxing facilities

info@ski-marathon.com

Accommodation

info@ski-marathon.com

LA VENOSTA ITT

Race administration

Ski Classics
racedirector@skiclassics.com

Waxing facilities

Samira Fahrner
evelin@reschenpass.it +39 0473 634 603

Accommodation

Thomas Punter
info@reschenpass.it +39 0473 633 101

ENGADIN LA DIAGONELA

Race administration

Jan Bill
info@ladiagonela.ch +41 81 851 60 88

Waxing facilities

Mirjam Spierer
mirjam.spierer@pontresina.ch +41 81 838 83 13

Accommodation

Ruben Monteiro
ruben.monteiro@engadin.ch +41 81 830 08 49

MARCIALONGA

Race administration

Davide Stoffie
info@marcialonga.it +39 0462 501 110

Accommodation

Marta Vanzo +
marta@marcialonga.it +39 0462 501 110

JIZERSKA PADESATKA

Race administration

elite@jiz50.cz

Waxing facilities

elite@jiz50.cz

Accommodation

jitka.svobodova@raul.cz

GRÖNKLITT CRITERIUM 61 & ITT

Race administration

Martin Holmstrand and Tomas Bredberg
skiclassics@orsagronklitt.se

Waxing facilities

Sören Sisell
langdcentrum@orsagronklitt.se

Accommodation

Booking centre Orsa Grönklitt +46 250 462 00

VASALOPPET

Race administration

Cathrine Mörk
cathrine.mork@vasaloppet.se +46702546870

Waxing facilities

N/A

Accommodation

Cathrine Mörk
cathrine.mork@vasaloppet.se +46702546870

BIRKEBEINERRENNET

Race administration

Anne Lise Borgundvåg
anne.lise@birkeneiner.no +47 905 43 382

Waxing facilities

info@birkebeinerrennet.no +47 417 72 900

Accommodation

Berit Nordseth
berit@birkebeiner.no +47 954 68 709

MARCIALONGA BODØ

Race administration

Skjalg Dreyer
post@maras.no +47 951 00 585

Waxing facilities

Sport 1 Bodø – Sportshuset
jorgen.bodo@sport1.no +47 980 26 830

Accommodation

Jon Lauland Pettersen
jon.pettersen@maras.no +47 979 75 497

REISTADLØPET & SUMMIT 2 SENJA

Race administration

Leif-Ketil Gamst
ceo@reistadlopet.no +47 488 96 802

Waxing facilities

Leif-Ketil Gamst
ceo@reistadlopet.no +47 488 96 802

Accommodation

Leif-Ketil Gamst
ceo@reistadlopet.no +47 488 96 802

APPENDIX 9 • EVENT PRIZE MONEY

*Preliminary event prize money - invoice details to be found in [Appendix 10](#)

BAD GASTEIN ITT

Invoice to Bad Gastein

WOMEN / MEN

1. EUR 2.500
2. EUR 1.000
3. EUR 600
4. EUR 350
5. EUR 300
6. EUR 250

BAD GASTEIN CRITERIUM

Invoice to Bad Gastein

WOMEN / MEN

1. EUR 5.000
2. EUR 2.000
3. EUR 1.200
4. EUR 700
5. EUR 600
6. EUR 500

DREI ZINNEN SKI MARATHON

Invoice to Pustertal

WOMEN / MEN

1. EUR 5.000
2. EUR 2.000
3. EUR 1.200
4. EUR 700
5. EUR 600
6. EUR 500

LA VENOSTA ITT

Invoice to La Venosta

WOMEN / MEN

1. EUR 2.500
2. EUR 1.000
3. EUR 600
4. EUR 350
5. EUR 300
6. EUR 250

ENGADIN LA DIAGONELA

Invoice to La Diagonela

WOMEN / MEN

1. EUR 5.500
2. EUR 2.500
3. EUR 1.300
4. EUR 900
5. EUR 700
6. EUR 500

MARCIALONGA

Invoice to Marcialonga

WOMEN / MEN

1. EUR 5.300
2. EUR 2.200
3. EUR 1.200
4. EUR 700
5. EUR 600
6. EUR 500

JIZERSKÁ 50

Invoice to Jizerská 50

WOMEN / MEN

1. EUR 3.000
2. EUR 1.400
3. EUR 750
4. EUR 500
5. EUR 250
6. EUR 100

GRÖNKLITT CRITERIUM 61

Invoice to Orsa Grönklitt

WOMEN / MEN

1. EUR 5.000
2. EUR 2.000
3. EUR 1.200
4. EUR 700
5. EUR 600
6. EUR 500

GRÖNKLITT ITT

Invoice to Orsa Grönklitt

WOMEN / MEN

1. EUR 2.500
2. EUR 1.000
3. EUR 600
4. EUR 350
5. EUR 300
6. EUR 250

VASALOPPET

Invoice to Vasaloppet

WOMEN / MEN

1. SEK 101.000
2. SEK 50.000
3. SEK 30.000
4. SEK 20.000
5. SEK 15.000
6. SEK 10.000
7. SEK 9.000
8. SEK 8.000
9. SEK 7.000
10. SEK 6.000
11. SEK 5.000
12. SEK 4.000
13. SEK 3.000
14. SEK 2.000
15. SEK 1.000

BIRKEBEINERRENNET

Invoice to Birkebeinerrennet

WOMEN / MEN

1. NOK 70.000
2. NOK 40.000
3. NOK 20.000
4. NOK 10.000
5. NOK 6.000
6. NOK 4.000

MARCIALONGA BODØ

Invoice to Birkebeinerrennet

1. EUR 5.000
2. EUR 2.500
3. EUR 1.500
4. EUR 800
5. EUR 650
6. EUR 550

REISTADLØPET

Invoice to Reistadløpet

WOMEN / MEN

1. EUR 5.000
2. EUR 2.000
3. EUR 1.200
4. EUR 700
5. EUR 600
6. EUR 500

SUMMIT 2 SENJA

Invoice to Reistadløpet

WOMEN / MEN

1. EUR 5.000
2. EUR 2.000
3. EUR 1.200
4. EUR 700
5. EUR 600
6. EUR 500

SC LONG DISTANCE SKIING AB

INVOICE ADDRESS

SC Long Distance Skiing AB
Humlegatan 2B
263 38 Höganäs
Sweden
VAT: SE556901904401

Electronic PDF invoices shall be sent to:
invoicing@skiclassics.com

POST ADDRESS

SC Long Distance Skiing AB
Humlegatan 2B
263 38 Höganäs
Sweden

BAD GASTEIN ITT & CRITERIUM

Kur- und Tourismusverband Bad Gastein
Kaiser-Franz-Josef-Straße 27
5640 Bad Gastein
Austria
VAT: ATU37782100

Electronic PDF invoices shall be sent to:
roswitha.hauser@gastein.com

DREI ZINNEN SKI MARATHON

Pustetaler Ski Marathon
Via al Lago 16
39034 Dobbiaco
Italy
VAT: 01120210214

Electronic PDF invoices shall be sent to:
info@ski-marathon.com or office@worldcup-dobbiaco.it

LA VENOSTA ITT

Ferienregion Reschenpass
Hauptstrasse 22
39027 Reschen
IT 00746300219
VAT: IT00746300219

Electronic PDF invoices shall be sent to: info@lavenosta.com

ENGADIN LA DIAGONELA

Verein La Diagonela
Quadratscha 18
7503 Samedan
Switzerland
VAT: CHE498557848

Electronic PDF invoices shall be sent to:
info@ladiagonela.ch

MARCIALONGA

SCI CLUB MARCIALONGA
Località Stalimen, 4
38037 Predazzo TN
VAT 01605290228
Sara Deflorian
+39 0462 501 110

Electronic PDF invoices shall be sent to:
sara@marcialonga.it

JIZERSKA PADESATKA

Asociace Sportu Pro Radost, z.s
Privozni 1064/2A,
170 00 Praha 7 - Holesovice
Czech republic
ICO (ID number): 05580421

Electronic PDF invoices shall be sent to:
elite@jiz50.cz

GRÖNKLITT CRITERIUM 61 & ITT

Orsa Grönklitt Friluftsanläggning AB
Box 133
794 22 Orsa
Sweden
VAT: 556098-7462
Notice: Ski Classics

Mail for invoices: faktura@orsagronklitt.se

VASALOPPET

Vasaloppsföreningen Sälen-Mora
EANMOT: 7368844015882
Box 171
831 22 Östersund
Sweden
Mark the invoice " Cathrine Mörk"

Electronic PDF invoices shall be sent to:
vasaloppet@pdf.attest.nu

BIRKEBEINERRENNET

Birken AS
Fabrikkveien 2
2450 Rena
Norway
VAT: NO912889912

Electronic PDF invoices shall be sent to:
birken@faktura.poweroffice.net

MARCIALONGA BODØ

Marcialonga Arctic Race AS
VAT: 989 051 113 MVA
EHF

or
Electronic PDF invoices shall be sent to: 989051113@faktura.poweroffice.net

REISTADLØPET & SUMMIT 2 SENJA

Reistadløpet AS
Ole Reistads vei 116
9325 Bardufoss
Norway
VAT: NO917388555

Electronic PDF invoices shall be sent to:
reistadloepet.as@mg.regnskap.snn.no

QCI - QUOTA COUNTRY INDEX

QCI are calculated from following parameters:

- Pro Team nationalities
- Pro Athletes nationalities
- Ski Classics overall prize money
- Event prize money
- Top 50 places
- Podium places
- Total points in Champion, Sprint and Climb competitions

Countries with QCI less than 10% are considered emerging.
Countries with QCI higher than 10% are considered established.

QUOTA COUNTRY INDEX FOR SEASON XVI

NORWAY	52,00%
SWEDEN	22,06%
FINLAND	7,39%
FRANCE	3,73%
CZECH REPUBLIC	3,49%
GERMANY	3,02%
ITALY	2,96%
SWITZERLAND	1,50%
ESTONIA	1,05%
AUSTRIA	0,76%
DENMARK	0,76%
JAPAN	0,33%
AUSTRALIA	0,21%
SPAIN	0,20%
GREAT BRITAIN	0,19%
TAIWAN	0,09%
NETHERLANDS	0,06%
SLOVENIA	0,06%
USA	0,06%
ICELAND	0,05%
CHINA	0,04%
OTHER	0,00%