


**SKI CLASSICS XV**  
**RULES AND REGULATIONS**  
**ATHLETES & PRO TEAMS**  
**2023/2024**



**V 15.1**

# CONTENT

<b>SEASON XV TOUR MAP</b> .....	03
<b>COMPETITIONS</b> .....	04
<b>UPDATES IN ATHLETE AND PRO TEAM RULES</b> .....	05
<b>ATHLETES AND PRO TEAM RULES SEASON XV</b> .....	06
<b>APPENDIX 1</b> SEASON XV 2023/2024 CALENDAR.....	10
<b>APPENDIX 2</b> POINTS TABLE AND EVENT POINT CATEGORIES.....	11
<b>APPENDIX 3</b> PRIZE MONEY DISTRIBUTION .....	14
<b>APPENDIX 4</b> FLOWER/BIB CEREMONY RUNNING ORDER.....	15
<b>APPENDIX 5</b> PRO TEAM LICENSE APPLICATION .....	16
<b>APPENDIX 6</b> SKI CLASSICS ATHLETE DECLARATION .....	17
<b>APPENDIX 7</b> BIB COLORS .....	18
<b>APPENDIX 8</b> EVENT CONTACTS.....	19
<b>APPENDIX 9</b> EVENT PRIZE MONEY .....	20
<b>APPENDIX 10</b> FINANCIAL DETAILS.....	21
<b>APPENDIX 11</b> QCI.....	22

# SEASON XV TOUR MAP



# COMPETITIONS



## CHAMPION COMPETITION

The yellow Champion bib is worn by the male and female athlete with the most current Champion points before each event. The overall winner is the athlete with most Champion points after the season in each gender. Athletes single best result from a Ski Classics Challengers event is included.



## SPRINT COMPETITION

The green Sprint bib is worn by the male and female with the most current Sprint points before each event. There are 0-2 sprints in the events. The seven fastest men and seven fastest women split times at the sprints will get points. The overall winner is the athlete with most sprint points after the season in each gender.



## YOUTH COMPETITION

The pink Youth bib is given to the best male and female athlete of age 26 or below. The age of the athlete is determined by the year when the Ski Classics final of the season takes place. Points in the Champion competition are used. Athletes single best result from a Ski Classics Challengers event is included.



## CLIMB COMPETITION

The squared patterned "Lumberjack" Climb bib is worn by the male and female with the most current Climb points before each event. There are 0-2 Climb checkpoints in the events. The seven fastest men and seven fastest women split times at the climb checkpoint lines will get points. The overall winner is the athlete with most Climb points after the season in each gender.



## PRO TEAM COMPETITION

The Pro Team competition is determined by the total amount of Pro Team points and Pro Team Sprint points after the season. Pro Team points are distributed at each Pro Tour event based on the Pro Team's collected Champion points from the Pro Team's best two male athletes and best two female athletes, the total Sprint and Climb points collected by the team, 50% of the Youth points of the best female and male athlete in the team and 50% of the Champion points of the best athlete from an emerging country.



## VETERAN BIB

The veteran bib is worn by the oldest starting Pro Team registered Ski Classics legend, male and female, in each Pro Tour event.



## GRAND CLASSICS

The Grand Classics events are Marcialonga, Jizerska Padesátka, Vasaloppet and Birkebeinerrennet. The athlete that wins all four events in one season completes a Grand Slam.



## SKI CLASSICS RANKING

SC Ranking points are handed out in all Ski Classics events. Ranking points are based on the race time difference between a skier and the winner in their gender. The 12 best event ranking points during last 24 months are counted.



## PRO TEAM DIRECTOR OF THE SEASON

At the end of the season Ski Classics will present nominees for Pro Team Director of the season. The award will be handed out to the Pro Team Director who has contributed to the development of the sport and the interest for Ski Classics.



## EVENT OF THE SEASON

At the end of the season Pro Team athletes, staff and Ski Classics officials vote for the Event of the season. Awards will be handed out at the Ski Classics Final Gala.



## SKI CLASSICS LEGENDS

In order to become a Legend, a skier needs to win 5 individual Pro Tour events or more. Wins in events that have been part of Ski Classics before the tour was created count for athletes that have been taking part in Ski Classics.



## SKI CLASSICS HALL OF FAME

Ski Classics Hall of Fame consists of Ski Classics Legends, Pro Team Directors of the Season and other staff elected by Ski Classics.

# UPDATES IN ATHLETE AND PRO TEAM RULES

## UPDATES FROM SEASON XIV

### PRO TEAM COMPETITION

The Pro Team competition is determined by the total amount of Pro Team points and Pro Team Sprint points after the season. Pro Team points are distributed at each Pro Tour event based on the Pro Team's collected Champion points from the Pro Team's best two male athletes and best two female athletes, the total Sprint and Climb points collected by the team, 50% of the Youth points of the best female and male athlete in the team and 50 % of the Champion points of the best athlete from a emerging nation.

### VETERAN BIB

The veteran bib is worn by the oldest starting Pro Team registered Ski Classics legend, male and female, in each Pro Tour event.

### GENERAL

In case of a Force Majeure Incident Ski Classics has the sole right to; decide the outcome of the Ski Classics competitions, points and prize distribution; to rearrange result lists; to reestablish ongoing order of athletes during an event; pause and restart an event; or take other actions necessary.

### QCI

Countries with QCI less than 10% are considered emerging. Countries with QCI higher than 10% are considered established.

Established countries for Season XV are Norway and Sweden. See full table in [Appendix 11](#).

Maximum 9 athletes from established countries can be registered in each Pro Team.

50 % of the Champion points of the best registered athlete from a emerging nation will calculate in the Pro Team Competition.

### LICENSE AND REGISTRATION FEE

Event registrations fees - EUR 70  
Pro Team License fee - EUR 2500

### PRO TEAM LICENSE OWNER

When registering a Pro Team, the owner of the Pro Team license must be specified. The owner may be a juridical- or physical person. The nationality of the Pro Team owner determines the nationality of the Pro Team.

Registered Pro Teams receive a unique Pro Team License ID.

The owner of a Pro Team license ID may transfer the ownership of the license between May 1st and September 1st each season. The Pro Team must have finished within top 25 in the Pro Team Competition previous season to own the license. The new owner of the Pro Team license ID must be e-mailer to [racedirector@skiclassics.com](mailto:racedirector@skiclassics.com) and confirmed by Ski Classics for the transfer to be valid.

### ATHLETE AGREEMENTS

The athlete agreement must contain; Start and end date of the agreement, termination clause including what to do if an athlete or Pro Team wants to end the agreement before end date. Antidoping clause including what happens if the athlete gets convicted breaking the antidoping rules.

### POINTS

Pro Team athletes must compete in the official registered Pro Team race suit design in order to compete in Ski Classics competitions at events. Logos on race suits may differ between athletes. Design and logos on hats may differ between athletes within a Pro Team.

### STARTING POSITIONS

Athletes wearing Ski Classics color bibs must start in the front row of the start field. Events may let the last edition event winner start in the front row.

### PRO TEAM TEMPO

Athletes registered in Pro Teams that have less than two male and two female athletes on the start list may be decided to start separately from the Pro Team start procedure.

### SKI CLASSICS GRAND FINALE RULES

At the Ski Classics Grand Finale event of the season, Grand Finale points shall be used. Seeding according to the current SC ranking, Champion competition or Pro Team Competition.

### PRO TEAM SPRINT POINT

Pro Teams can collect Pro Team points to the overall Pro Team Competition. Points table to be found in [Appendix 2](#).

### SKI CLASSICS HALL OF FAME

Ski Classics Hall of Fame consists of Ski Classics Legends, Pro Team Directors of the Season and other staff elected by Ski Classics.

### SIDE EVENTS

If there is a Pro Team presentation before an event, the Pro Team Director and athletes must be present.

### ATHLETE DECLARATION

Updated with waivers, insurance, eligibility, rights and GDPR.

# ATHLETES AND PRO TEAM RULES SEASON XV

## GENERAL

- 1.** Ski Classics Pro Tour season XV is defined as May 1st 2023 until April 14th 2024. Ski Classics Challengers season XV is defined as March 31st 2023 until April 7th 2024.
- 2.** Ski Classics Rules and Regulations are valid on top of the FIS rules (ICR). Athletes must act in accordance to FIS (ICR) and Ski Classics rules and regulations.
  - a** Ski Classics is responsible for and has the right to amend the Ski Classics rules and regulations at any time.
  - b** Ski Classics has the right to act upon violations of the rules.
  - c** Ski Classics representative is part of the Competition Jury.
  - d** Ski Classics Pro Tour events are held in classic technique, all classic sub-techniques to be clear; double poling, double poling with kick, diagonal, herringbone and downhill position, are allowed at all parts of the event courses.
  - e** In case of a Force Majeure incident Ski Classics has the sole right to; decide the outcome of the Ski Classics competitions, points and prize distribution; to rearrange result lists; to reestablish ongoing order of athletes during an event; pause and restart an event; or take other actions necessary.

## PRO TEAM LICENSE

- 3.** Pro Teams must hold a Pro Team License to be part of Ski Classics. The Pro Team License gives the right to register a Pro Team.
  - a** To apply for a Pro Team License, a presentation of the Pro Team including the information specified in [Appendix 5](#) shall be sent to [racedirector@skiclassics.com](mailto:racedirector@skiclassics.com).
  - b** To be granted a Pro Team License, the Pro Team must consist of minimum 4 and maximum 10 athletes, including 2 athletes of both genders and maximum 9 athletes from established nations. See [Appendix 11](#). The Pro Team name must include the word "Team".
  - c** Ski Classics has the sole right at own decision to hand out Pro Team Licenses. No Pro Team License will be granted a Pro Team with outstanding invoices from Ski Classics.
  - d** Top 25 Pro Teams registered previous Ski Classics season are guaranteed a Pro Team License if registered before September 1st 2023.
  - e** When a Pro Team License has been granted, Pro Team shall be registered no later than September 15th 2023. By registering, the Pro Team accepts Ski Classics Rules and Regulations. Number of registered Ski Classics Pro Teams is limited to 35.
  - f** Late Pro Team registrations may be accepted by Ski Classics.
  - g** Participation in Pro Team Tempo and Prologue weekend is mandatory for Pro Teams.
  - h** Pro Teams must register two female athletes and two male athletes in minimum five events.
  - i** When registering a Pro Team, the owner of the Pro Team license must be specified. The owner may be a juridical- or physical person. The nationality of the Pro Team owner determines the nationality of the Pro Team.
  - j** Registered Pro Teams receive a unique Pro Team License ID.
  - k** The owner of a Pro Team license ID may transfer the ownership of the license between May 1st and September 1st each season. The Pro Team must have finished within top 25 in the Pro Team Competition previous season. The new owner of the Pro Team license ID must be e-mailed to [racedirector@skiclassics.com](mailto:racedirector@skiclassics.com) and confirmed by Ski Classics in order for the transfer to be valid.

- 4.** Athletes must be registered as a member of an official Ski Classics Pro Team latest 48 hours before an event and have a valid FIS-license in order to compete for Ski Classics points and Ski Classics prize money.
- 5.** Pro Teams are not allowed to unregister or change athletes during the season.
- 6.** Athletes are guaranteed start entries in each event if the following criteria are fulfilled:
  - a** The athlete is registered in a Pro Team.
  - b** The athlete has a active FIS license.
  - c** The athlete is registered to each event through Ski Classics latest September 15th 2023. Athletes registered after September 15th 2023 will not be guaranteed a start place.
  - d** An athlete will start in the elite group if the athlete has a Ski Classics ranking that ensure a spot in the elite group.
- 7.** When registered to events through Ski Classics, athletes accept each event's participation rules.
  - a** Registration of athletes to Ski Classics events are done when registering a Pro Team at [www.skiclassics.com](http://www.skiclassics.com), registration is open from August 15th until September 15th 2023.
  - b** 2023/2024 the registration fee is Euro 70 + VAT per athlete and event. Pro Team Tempo registration fee is EUR 150 + VAT per Pro Team.
  - c** Ski Classics will invoice the total registration fee of event registrations made through Ski Classics.
  - d** Event registrations made through Ski Classics can only be transferred to Pro Team athletes within the same Pro Team. If an event is cancelled, the event's cancellation policy applies to the registrations made through Ski Classics except if an replacement event is organized, then the Pro Team registrations are automatically transferred to the substituting event. Pro Team Tempo is a non refundable event.
  - e** Registrations after September 15th 2023 are made directly to each event according to each event's own rules, no start place is guaranteed and late registration fees may be different than in point b above.
  - f** Pro Teams are allowed to make name changes until 13:00 local time race day -1.

- 8.** Ski Classics will invoice the Pro Team License fee after the registration has been completed. The fee is EUR 2500 + VAT for registration made until September 1st and EUR 3000 + VAT until September 15th 2023. Ski Classics may approve late Pro Team registrations after September 15th 2023, late entry license fee of EUR 3500 + VAT will apply. Pro Team License fee is not refundable and must be paid before Pro Team may collect points in a Ski Classics event.

## ATHLETE DECLARATION & AGREEMENT

- 9.** Pro Team athletes must sign the Ski Classics Athlete Declaration in [Appendix 5](#)
  - a** The athlete declarations must be scanned and emailed to [racedirector@skiclassics.com](mailto:racedirector@skiclassics.com) to be registered in Ski Classics.
  - b** The Pro Teams must have a signed athlete agreement with their registered athletes including that they accept the rules of Ski Classics and the athlete declaration in [Appendix 5](#). The athlete agreement must contain; Start and end date of the agreement, termination clause including what to do if an athlete or Pro Team wants to end the agreement before end date. Antidoping clause including what happens if the athlete gets convicted breaking the antidoping rules.

# ATHLETES AND PRO TEAM RULES SEASON XV

## POINTS

**10.** Ski Classics points are awarded according to the points table in [Appendix 2](#).

**a** Ski Classics Pro Tour events may categorize as a 100p, 200p 300p event, where the number indicate the amount of Ski Classics points to winning athlete and which points table applicable at the event.

**b** All registered Pro Team athletes finishing an Pro Tour event receives minimum one point in the Champion competition.

**c** All Pro Team athletes starting and finishing within 20% of the winning time in both prologue weekend competitions will receive 50 individual bonus points in the Champion competition.

**11.** Ski Classics may retain collected Ski Classics individual and/or Pro Team points if an athlete is violating rules in an event. Protests and technical violation claims must be handed in to Ski Classics within 60 minutes after the winner finishes the event by handing over a written protest to the Jury, or emailing to [racedirector@skiclassics.com](mailto:racedirector@skiclassics.com). Protests are handled according to FIS ICR-rules. All results are final one hour after the event winner has finished and the Jury has checked protests. Exception will be made for doping violation cases.

**12.** An athlete must finish the race in order to receive points in the Champion, Sprint, Climb, Youth or Pro Team competition. Pro Team athletes must compete in the official registered Pro Team race suit design in order to compete in Ski Classics competitions at events. Logos on race suits may differ between athletes. Design and logos on hats may differ between athletes within a Pro Team.

**13.** In the event of a dead-heat between two athletes the points for the places will be added together and divided by two (e.g. in a dead-heat for 1st and 2nd places, both athletes will receive  $(300+255)/2 = 277.5$  points,  $(200+170)/2 = 185$  points or  $(100+90)/2 = 95$  points.)

**14.** If two or more athletes or Pro Teams score the same number of points after the last/final event in any competitions, the leader/winner is the athlete who has:

- a** The best results (i.e. most 1st, most 2nd and most 3rd places etc.) in the specific competition.
- b** If still equal in Climb or Sprint bib competitions, the final ranking in the Champion bib competition will be decisive.

If the athletes are still equal, two (or more) winners will be awarded. The prize money for the places will be added together and divided (e.g. in a dead-heat for 1st and 2nd places, both athletes will receive the prize money of the 1st and 2nd place divided in 2).

**15.** All Pro Team athletes may calculate the single best result from a Ski Classics Challengers event per season in the Champion and Youth bib competition. Challengers event points are handed out according to [Appendix 2](#).

## SIDE EVENTS

**16.** All Ski Classics athletes shall be available for the media. Points may be retained from the Pro Team if athletes are not available for:

- a** Short comments for media on event day, prior to start.
- b** Pro Team members and Pro Team Director must be present at press conference / pre-race interviews if they are invited.

**c** Available for questions from media immediately after finish and after the flower ceremony.

**d** Top 3 finishing men and women + bib holders must be present in Pro Team Area until flower ceremony is completed.

**e** If there is a Pro Team presentation before an event, the Pro Team Director and athletes must be present.

## RACE

**17.** Each Pro Team participating in a Ski Classics event shall have a representative present at the event's Team Captains Meeting (TCM) on the day prior to the race. The meeting is held at 16:30 local time unless otherwise stated from the race organizer.

**a.** Pro Teams must collect bibs 11.00-13.00 local time race day -1 in Ski Classics truck or other informed location.

**18.** For Ski Classics athletes it is mandatory to wear provided color bibs and GPS devices if selected. GPS devices must be handed back to organiser or Ski Classics trailer immediately after the race.

**19.** If a color bib leader doesn't start at a event or leads more than one bib, the highest ranked ( 1. Champ, 2. Sprint, 3. Climb, 4. Youth/Veteran) available athlete in each bib competition shall wear the bib. If an athlete is leading one bib competition he or she shall wear that bib regardless of the bib ranking.

**20.** Athletes wearing Ski Classics color bibs must start in the front row of the start field. Events may let the last edition event winner start in the front row.

**21.** Ski Classics has the right to hand out wild cards.

**22.** Only finishing athletes are allowed in the finish area.

## SERVICE ZONES

**23.** If service zones are assigned at an event, following rules apply:

- a** Athletes may only receive service of drinkbelts and/or feeding (drinks, gels, bars etc.) in assigned service zones. Athletes may throw drinkbelts to staff outside of service zones.
- b** Replacement service for broken ski equipment is allowed in and outside of service zones.
- c** Trash shall only be thrown within service zones and if dedicated waste zones.
- d** Pro Team staff may only stand on each side of the race track, not in between skiers in the tracks.
- e** Violation of these rules may lead to monetary fines and with drawn points.

## COLD WEATHER PRECAUTIONS

**24.** Passages from FIS ICR (2021):

*388.1.1 There are three main factors to be considered by the Jury regarding cold weather safety: the temperature; the duration of the exposure; and, the clothing and other protection against cold weather. These factors together with any other relevant information such as the "wind chill factor" must be taken into consideration when a decision is made regarding cold weather.*

*388.2.1 If the temperature level is forecast to be between minus 15 °C and minus 25 °C at any point on the course, recommendations regarding cold weather protection should be made available to the competitors. Under such conditions it is the responsibility of the competitors to seek the information and to follow*

# ATHLETES AND PRO TEAM RULES SEASON XV

the recommendations given by the organiser.

388.3.1 If the temperature in a major portion of the course is minus 25 °C or below, the competition shall be delayed or cancelled.

**25.** If an event is held under 388.2.1 conditions, the jury may decide on precautions such as allowing athletes to wear isolation clothing covering the race bib. Precautions shall if possible be communicated latest at TCM.

**a** Heating soles, socks, and gloves are allowed in all conditions.

## GAMBLING ON COMPETITIONS

**26.** Passages from the FIS ICR (2023):

205.8 *Gambling on Competitions*

*Competitors, trainers, team officials and technical officials are prohibited from betting on the outcome of competitions in which they are involved.*

## SKI CLASSICS CHALLENGERS

**27.** Ski Classics Challengers events are presented at [www.skiclassics.com](http://www.skiclassics.com). The list of Challengers events will be updated continuously through the season.

- a** Challengers events are held in cross country or roller skiing, in classic or free technique.
- b** Registrations to Challengers events are made directly to the event.
- c** Challengers event organization is responsible for distribution of prize money.
- d** Ski Classics Challengers points are distributed according to [Appendix 2](#).
- e** Ski Classics Pro Team athletes will count their single best Challengers result (points) in the Champion and Youth competitions.

## SKI CLASSICS RANKING

**28.** The SC Ranking is the international ranking system for long distance skiing including athletes of both genders and any level of performance.

- a** At each Pro Tour and Challengers event, SC Ranking points are distributed to all participants based on the percentual time a participant is behind the winning time in respective gender.
- b** The winner of each gender at Pro Tour event receives 2.000.000 points and at Challenger events 500.000 points.
- c** On top of point 26b, Pro Tour events the winner receives 200.000 bonus points, 2nd placed 100.000 bonus points and 3rd placed 40.000 bonus points.
- d** SC Ranking ranks athletes on their 12 best event points the latest 24 months. SC Ranking is updated every Monday.

## START PROCEDURES

### 29. Pro Team Tempo

- a** The Pro Team Tempo is organized as an interval start competition with block starts, one Pro Team starting at a time in reversed order according to the Pro Team ranking of previous season with the top 5 ranked teams spread out in the starting field. The gap between the blocks are 4 minutes. Male Pro Team athletes starts 30 seconds ahead of female Pro Team athletes.
- b** Male Pro Team athletes who are caught up by female Pro Team athletes must leave a gap to the females and stay minimum 20 meters behind.
- c** Pro Teams must ease for passing Pro Teams and not interfere with the passing Pro Teams chosen racing line.
- d** The finishing time of the 2nd ranked male and 2nd ranked female of the team will count for the classification. The total time decides the result of the Pro Team Tempo. The Pro Team Tempo points are

handed out according to points table, [Appendix 2](#). In the Pro Team Tempo, minimum 1 athlete per gender per team must start in order for the Pro Team to receive Pro Team points.

**e** Athletes registered in Pro Teams that have less than two male and two female athletes on the start list may be decided to start separately from the Pro Team start procedure.

### 30. Individual Time Trial

Separated Women and Men Individual with recommended 30-60 second interval start. Ski Classics and Race Director has the right to seed the elite field.

### 31. Masstart

Separated Women and Men Competition masstart with seeding according to the current SC ranking.

### 32. Kilometer Zero

Gliding start from fixed start positions. Athletes must remain their position in the start field until the leading skidoo gives the start signal.

## SKI CLASSICS - GRAND CLASSICS

**33.** Ski Classics Grand Classics events for Season XV are Marcialonga, Jizerská 50, Vasaloppet and Birkebeinerrennet.

### 34. Grand Slam

The Pro Team athlete who wins all four Grand Classics events in one season completes a Grand Slam. The Grand Slam net prize money fund specified in [Appendix 3](#), will be distributed according to following conditions:

- a** One male Pro Team athlete and/or one female Pro Team athlete wins all four Grand Classics events in one season.
- b** All wins have been achieved according to good sportsmanship. Ski Classics reserves the right to withhold the prize money fund in full or partly, if suspected or proven misconduct by the winning athlete, Pro Team other athletes or Pro Teams (e.g. co-athletes of same Pro Team intentionally lose an event).
- c** If two Pro Team athletes complete the Grand Slam in one season, the prize money fund will be divided equally between the two athletes.
- d** If one or more Grand Classics events are moved to other venues, replaced or in any way modified from the original race track it will not count as a Grand Classics event.
- e** All Grand Classics events needs to fulfill the demands of a Grand Classics event in order for the Grand Classics prize money fund to be distributed.

## SKI CLASSICS GRAND FINALE RULES

**35.** At the Ski Classics Grand Finale event of the season, Grand Finale points shall be used. Seeding according to the current SC ranking, Champion competition or Pro Team Competition.

## PRIZE MONEY

**36.** Ski Classics athletes must participate in the flower ceremony and prize giving ceremony of the event (if arranged) in order to receive event prize money. Ski Classics recommends the organizing committee a minimum prize money fund of EUR 10.000+VAT for a 100p categorized event, EUR, 20.000+VAT for a 200p categorized event and EUR 30.000+VAT for a 300p event. At double event week-ends, the recommended total prize money sum is minimum EUR 30 000+VAT.

**37.** Event prize money is distributed by each event and Pro Teams shall follow the instructions given by each event organization. Prize money amounts in [Appendix 9](#) and invoice information in [Appendix 10](#). Invoices shall be sent latest May 31st, 2023.

**38.** Ski Classics Pro Teams and athletes must participate in the prize ceremony at the Ski Classics Final in order to receive overall season prize money. If an athlete cannot participate in the Ski Classics Final due to illness and/or reasons beyond the athlete's control, the athlete must submit documentation stating clearly the reasons for not attending. The document must be certified by a medical doctor and submitted to Ski Classics in order for the athlete's points to be valid for the overall results. Overall prize money is distributed according to [Appendix 3](#).

**39.** Overall season prize money must be invoiced Ski Classics latest May 31st, 2023.

- a** Invoices shall be sent by a registered company, owned either by Pro Team or individual Pro Team athlete. The company must be registered in the home country of the Pro Team or Pro Team athlete and shall apply and follow the rules and regulations regarding tax and VAT of this country.
- b** Prize money shall be invoiced in EUR without VAT applied.
- c** Invoices shall include the following information:
  - Company name
  - Invoice date
  - Invoice number
  - Due date with payment terms of 30 days
  - Amount of prize money (EUR)
  - IBAN number of the bank account
  - BIC number of the bank account
  - Registration/VAT number of the company

### AND

- If the company is registered in an EU country the following text must be written on the invoice "Reverse charge on VAT".

### OR

- If the company is registered in a non-EU country the following text must be written on the invoice "Article 44 VAT directive".

**40.** Ski Classics official Pro Teams shall have the Ski Classics Pro Team logo on their homepage, hyperlinked to [www.skiclassics.com](http://www.skiclassics.com).

**40.** Ski Classics and the Events part of Ski Classics, may use photos and videos of registered Pro Teams and athletes in order to market Ski Classics without prior permission or remuneration.

**41.** Pro Teams are encouraged to share Ski Classics content in social media and other channels, and to share their on content and news with Ski Classics by email to: [press@skiclassics.com](mailto:press@skiclassics.com).

**42.** Pro Teams are allowed to use up to 30 seconds from the event highlight created by Ski Classics, for their own social media usage.

**43.** Ski Classics Pro Teams are allowed to use Ski Classics Official Pro Team logo for their own marketing purposes.

\*Preliminary start times

## Ski Classics Prologue Weekend

### Event 1 – Bad Gastein Pro Team Tempo

Bad Gastein, Austria  
Saturday December 9th 2023  
15 km  
Start times:  
Women: 09:30 CET  
Men: 09:30 CET

## Ski Classics Prologue Weekend

### Event 2 - Bad Gastein Criterium

Bad Gastein, Austria  
Sunday December 10th 2023  
35 km  
Start times:  
Women: 09:15 CET  
Men: 11:15 CET

### Event 3 – La Venosta Criterium

Val Venosta, Italy  
Saturday December 16th 2023  
35 km  
Start times:  
Women: 08:15 CET  
Men: 10:30 CET

### Event 4 – La Venosta ITT

Val Venosta, Italy  
Saturday December 17th 2023  
10 km  
Start times:  
Women: 08:00 CET  
Men: 09:30 CET

### Event 5 – Pustertaler Ski Marathon

Sexten - Villabassa, Italy  
Sunday January 13th 2024  
62 km  
Start times:  
Women: 09:05 CET  
Men: 09:00 CET

### Event 6 – Engadin La Diagonela

Pontresina - Zuoz, Switzerland  
Saturday January 20th 2024  
55 km  
Start times:  
Women: 09:00 CET  
Men: 08:55 CET

## Grand Classics

### Event 7 – Marcialonga

Moena-Cavalese, Italy  
Sunday January 28th 2024  
70 km  
Start times:  
Women: 08:05 CET  
Men: 08:00 CET

## Grand Classics

### Event 8 – Jizerská Padesátka

Bedřichov, Czech Republic  
Sunday February 11th 2024  
50km  
Start times:  
Women: 08:25 CET  
Men: 08:20 CET

### Event 9 – Grönklitt Classic

Orsa Grönklitt, Sweden  
Saturday February 17th 2024  
50km  
Start times:  
Women: 08:00 CET  
Men: 10:30 CET

### Event 10 – Grönklitt ITT

Orsa Grönklitt, Sweden  
Sunday February 18th 2024  
12 km  
Start times:  
Women: 08:00 CET  
Men: 09:30 CET

## Grand Classics

### Event 11 – Vasaloppet

Sälen - Mora, Sweden  
Sunday March 3rd 2024  
90 km  
Start times:  
Women: 08:00 CET  
Men: 08:00 CET

## Grand Classics

### Event 12 – Birkebeinerrennet

Rena - Lillehammer, Norway  
Saturday March 16th 2024  
54 km  
Start times:  
Women: 08:00 CET  
Men: 07:a45 CET

### Event 13 – Reistadløpet

Setermoen - Bardufoss, Norway  
Saturday April 6th 2024  
40 km  
Start times:  
Women: 10:00 CET  
Men: 10:30 CET

### Event 14 – Summit 2 Senja

Bardufoss - Finnsnes, Norway  
Saturday April 7th 2024  
60 km  
Start times:  
Women: 09:05 CET  
Men: 09:00 CET

## Ski Classics Grand Finale

### Event 15 - Janteloppet

Hafjell, Norway  
Saturday April 13th 2024  
100 km  
Start times:  
Women 08:00 CET  
Men: 08:45 CET

# APPENDIX 2A • POINTS TABLE 1/2

PRO TEAM COMPETITION	
POSITION	POINTS
1	200 p
2	180 p
3	160 p
4	140 p
5	120 p
6	100 p
7	90 p
8	85 p
9	80 p
10	75 p
11	70 p
12	65 p
13	60 p
14	55 p
15	50 p
16	45 p
17	40 p
18	35 p
19	32 p
20	30 p
21	28 p
22	26 p
23	24 p
24	22 p
25	20 p
26	18 p
27	16 p
28	14 p
29	12 p
30	10 p
31	9 p
32	8 p
33	7 p
34	6 p
35	5 p

PRO TEAM SPRINT POINTS	
POSITION	POINTS
<b>MEN</b>	
1	30 p
2	23 p
3	16 p
4	12 p
5	9 p
6	6 p
7	4 p
<b>WOMEN</b>	
1	30 p
2	23 p
3	16 p
4	12 p
5	9 p
6	6 p
7	4 p

PRO TOUR EVENT 300	
CHAMPION	
POSITION	POINTS
1	300 p
2	255 p
3	225 p
4	195 p
5	180 p
6	158 p
7	150 p
8	143 p
9	135 p
10	128 p
11	120 p
12	114 p
13	108 p
14	102 p
15	96 p
16	90 p
17	86 p
18	81 p
19	77 p
20	72 p
21	68 p
22	65 p
23	62 p
24	59 p
25	57 p
26	55 p
27	54 p
28	53 p
29	52 p
30	51 p
31	50 p
32	49 p
33	48 p
34	47 p
35	46 p
36	45 p
37	44 p
38	43 p
39	42 p
40	41 p
41	40 p
42	39 p
43	38 p
44	37 p
45	36 p
46	35 p
47	34 p
48	33 p
49	32 p
50	31 p
51	30 p
52	29 p
53	28 p
54	27 p
55	26 p
56	25 p
57	24 p
58	23 p
59	22 p
60	21 p
61	20 p
62	19 p
63	18 p
64	17 p
65	16 p
66	15 p
67	14 p
68	13 p
69	12 p
70	11 p
71	10 p
72	9 p
73	8 p
74	7 p
75	6 p
76	5 p
77	4 p
78	3 p
79	2 p
≥ 80	1 p

PRO TOUR EVENT 200	
CHAMPION	
POSITION	POINTS
1	200 p
2	170 p
3	150 p
4	130 p
5	120 p
6	105 p
7	100 p
8	95 p
9	90 p
10	85 p
11	80 p
12	76 p
13	72 p
14	68 p
15	64 p
16	60 p
17	57 p
18	54 p
19	51 p
20	48 p
21	45 p
22	43 p
23	41 p
24	39 p
25	37 p
26	35 p
27	34 p
28	33 p
29	32 p
30	31 p
31	30 p
32	29 p
33	28 p
34	27 p
35	26 p
36	25 p
37	24 p
38	23 p
39	22 p
40	21 p
41	20 p
42	19 p
43	18 p
44	17 p
45	16 p
46	15 p
47	14 p
48	13 p
49	12 p
50	11 p
51	10 p
52	9 p
53	8 p
54	7 p
55	6 p
56	5 p
57	4 p
58	3 p
59	2 p
≥ 60	1 p

PRO TOUR EVENT 100	
CHAMPION	
POSITION	POINTS
1	100 p
2	90 p
3	80 p
4	75 p
5	70 p
6	65 p
7	60 p
8	56 p
9	52 p
10	48 p
11	44 p
12	40 p
13	38 p
14	36 p
15	34 p
16	32 p
17	30 p
18	28 p
19	26 p
20	24 p
21	22 p
22	20 p
23	18 p
24	17 p
25	16 p
26	15 p
27	14 p
28	13 p
29	12 p
30	11 p
31	10 p
32	9 p
33	8 p
34	7 p
35	6 p
36	5 p
37	4 p
38	3 p
39	2 p
≥ 40	1 p

## APPENDIX 2A • POINTS TABLE 2/2

### SKI CLASSICS GRAND FINALE

#### CHAMPION

POSITION	POINTS
1	200 p
2	199 p
3	198 p
4	197 p
5	196 p
6	195 p
7	194 p
8	193 p
9	192 p
10	191 p
11	190 p
12	189 p
13	188 p
14	187 p
15	186 p
16	185 p
17	184 p
18	183 p
19	182 p
20	181 p
21	180 p
22	179 p
23	178 p
24	177 p
25	176 p
26	175 p
27	174 p
28	173 p
29	172 p
30	171 p
31	170 p
32	169 p
33	168 p
34	167 p
35	166 p
36	165 p
37	164 p
38	163 p
39	162 p
40	161 p
41	160 p
42	159 p
43	158 p
44	157 p
45	156 p
46	155 p
47	154 p
48	153 p
49	152 p
50	151 p
51	150 p
52	149 p
53	148 p
54	147 p
55	146 p
56	145 p
57	144 p
58	143 p
59	142 p
60	141 p
61	140 p
62	139 p
63	138 p
64	137 p
65	136 p
66	135 p
67	134 p
68	133 p
69	132 p
70	131 p
71	130 p
72	129 p
73	128 p
74	127 p
75	126 p
76	125 p
77	124 p
78	123 p
79	122 p
80	121 p
81	120 p
82	119 p
83	118 p
84	117 p
85	116 p
86	115 p

87	114 p
88	113 p
89	112 p
90	111 p
91	110 p
92	109 p
93	108 p
94	107 p
95	106 p
96	105 p
97	104 p
98	103 p
99	102 p
100	101 p
≥ 101	100 p

### SPRINT

POSITION	POINTS	
	100%	50%
1	30 p	15 p
2	23 p	12 p
3	16 p	8 p
4	12 p	6 p
5	9 p	4 p
6	6 p	3 p
7	4 p	2 p

WOMEN		
1	30 p	15 p
2	23 p	12 p
3	16 p	8 p
4	12 p	6 p
5	9 p	4 p
6	6 p	3 p
7	4 p	2 p

### CLIMB

POSITION	POINTS		
	ICONIC	100%	50%
1	45 p	30 p	15 p
2	35 p	23 p	12 p
3	24 p	16 p	8 p
4	18 p	12 p	6 p
5	13 p	9 p	4 p
6	9 p	6 p	3 p
7	6 p	4 p	2 p

WOMEN			
1	45 p	30 p	15 p
2	35 p	23 p	12 p
3	24 p	16 p	8 p
4	18 p	12 p	6 p
5	13 p	9 p	4 p
6	9 p	6 p	3 p
7	6 p	4 p	2 p

### CHALLENGERS

POSITION	POINTS
1	50 p
2	49 p
3	48 p
4	47 p
5	46 p
6	45 p
7	44 p
8	43 p
9	42 p
10	41 p
11	40 p
12	39 p
13	38 p
14	37 p
15	36 p
16	35 p
17	34 p
18	33 p
19	32 p
20	31 p
21	30 p
22	29 p
23	28 p
24	27 p
25	26 p
26	25 p
27	24 p
28	23 p
29	22 p
30	21 p
31	20 p
32	19 p
33	18 p
34	17 p
35	16 p
36	15 p
37	14 p
38	13 p
39	12 p
40	11 p
41	10 p
42	9 p
43	8 p
44	7 p
45	6 p
46	5 p
47	4 p
48	3 p
49	2 p
50	1 p

\*Preliminary schedule

### Event 1 – Bad Gastein Pro Team Tempo

Bad Gastein, Austria  
Pro Team Competition

### Event 2 – Bad Gastein Criterium

Bad Gastein, Austria  
200p  
100% Sprint x 2  
50% Climb x 2

### Event 3 – La Venosta Criterium

Val Venosta, Italy  
200p  
50% Sprint  
100% Climb x 2

### Event 4 – La Venosta ITT

Val Venosta, Italy  
100p  
100% Climb

### Event 5 – Pustertaler Ski Marathon

Sexten - Villabassa, Italy  
200p  
100% Sprint Nordic Arena  
100% Climb Cimabanche

### Event 6 – Engadin La Diagonela

St Moritz, Switzerland  
200p  
100% Sprint Samedan  
100% Sprint St Moritz

### Event 7 – Marcialonga

Trentino, Italy  
GRAND CLASSICS  
300p  
100% Sprint Canazei  
100% Sprint Predazzo  
Iconic Climb Cascata

### Event 8 – Jizerská Padesátka

Bedrichov, Czech Republic  
GRAND CLASSICS  
300p  
100% Sprint Jizerka  
100% Climb Na Kneipe  
100% Climb Smutna Luoka

### Event 9 – Grönklitt Classic

Orsa Grönklitt, Sweden  
200p  
100% Climb  
100% Sprint

### Event 10 – Grönklitt ITT

Orsa Grönklitt, Sweden  
100p  
50% Sprint  
50% Climb

### Event 11 – Vasaloppet

Sälen - Mora, Sweden  
GRAND CLASSICS  
300p  
100% Climb First Hill  
100% Sprint Smågan  
100% Sprint Evertsberg

### Event 12 – Birkebeinerrennet

Rena - Lillehammer, Norway  
GRAND CLASSICS  
300p  
Iconic Climb Raudfjellet  
100% Climb Midtfjellet

### Event 13 – Reistadløpet

Setermoen - Bardufoss, Norway  
200p  
100% Sprint Storlømyra  
Iconic Climb Orta

### Event 14 – Summit 2 Senja

Bardufoss - Finnsnes, Norway  
200p  
100% Sprint Lombnesmyra  
Iconic Climb Magdaskaret

### Event 15 - Janteloppet

Bardufoss - Finnsnes, Norway  
GRAND FINALE  
200p  
100% Sprint x 2  
Pro Team Sprint x 2  
Grand Finale Points table

# APPENDIX 3 • PRIZE MONEY DISTRIBUTION

**TOTAL PRIZE SUM: TBC**



CHAMPION COMPETITION WOMEN	
POSITION	PERCENTAGE
1	13.3%
2	6.3%
3	3.7%
4	2.5%
5	1.3%



CHAMPION COMPETITION MEN	
POSITION	PERCENTAGE
1	13.3%
2	6.3%
3	3.7%
4	2.5%
5	1.3%



PRO TEAM COMPETITION	
POSITION	PERCENTAGE
1	7.5%
2	4.2%
3	3.2%
4	2.5%
5	2.0%
6	1.6%
7	1.4%



SPRINT COMPETITION WOMEN	
POSITION	PERCENTAGE
1	3.3%
2	1.1%
3	0.7%



SPRINT COMPETITION MEN	
POSITION	PERCENTAGE
1	3.3%
2	1.1%
3	0.7%



GRAND SLAM	EUR 100 000
JACKPOT CONTRIBUTION	1.0%



CLIMB COMPETITION WOMEN	
POSITION	PERCENTAGE
1	3.3%
2	1.1 %
3	0.7%



CLIMB COMPETITION MEN	
POSITION	PERCENTAGE
1	3.3%
2	1.1 %
3	0.7%



YOUTH COMPETITION WOMEN	
POSITION	PERCENTAGE
1	1.0%



YOUTH COMPETITION MEN	
POSITION	PERCENTAGE
1	1.0%

### FLOWER/BIB CEREMONY STAGE

If possible, the stage for the flower ceremony should be located in front of both spectators and photographers and next to the Mixed Zone - close to the TV interview positions. The exact location is to be coordinated with TV Director.

### FLOWER/BIB CEREMONY RUNNING ORDER

The Flower Ceremony will be executed immediately after each race finish. It will follow a standardized ritual by 1-2 designees of the OC and a host as below, Ski Classics Race Director will give the speaker official results and holders of color bibs before ceremony. Men and women flower ceremonies may be combined.

- Introduction with the Ski Classics anthem
- Skier of the day + *Photo session*
- Pro Team Director of the Pro Team collecting most Pro Team points at the event + *Photo session*

### COLOR BIBS

Bibs are put on and bib holders stay on the side of the podium.

- Pink Youth color bib woman/man + *Photo session*
- Green Sprint color bib woman/man + *Photo session*
- Lumberjack Climb color bib woman/man + *Photo session*
- Yellow Champion color bib woman/man + *Photo session*
- Photo session all bib holders together  
(*then, all bib holders leave the stage*)

### MEN

- Ranking of the day 1-3. Speaker announcing top 3 athletes in order 3rd-2nd-1st,
- Flower ceremony 3rd-2nd-1st
- Sparkeling drink pop-out
- National anthem of winner
- Photo session top 3 (during photo session with background music)
- Top 3 leaving stage.

### WOMEN

- Ranking of the day 1-3. Speaker announcing top 3 athletes in order 3rd-2nd-1st,
- Flower ceremony 3rd-2nd-1st
- National anthem of winner
- Sparkeling drink pop-out
- Photo session top 3 (during photo session with background music)
- Top 3 leaving stage
- Photo session winner Women and winner Men combined
- End vignette Ski Classics anthem

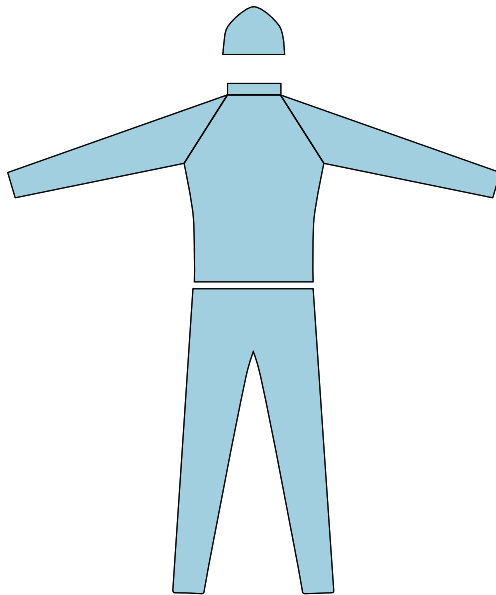
**PRO TEAM LICENSE** application shall include a PowerPoint presentation describing:

- Background
- Sponsors
- Athletes
- Pro Team Director
- Purpose and goals of the team
- Nationality of Team and Athletes
- Number of events the Team plans to participate in

### Team logo template

**Pro Team Logo Template**  
**Proportion: 5x2**  
**in .eps format**  
**(fill this box)**

### Race suit template



Digital files will be sent upon confirmed Pro Team Application

### Professional athlete photos





**PRO TEAM**

**PRO TEAM ATHLETE**

**PRO TEAM DIRECTOR**

**AS A PART OF A SKI CLASSICS** long distance Pro Team, the Athlete (Pro Team and Athlete above below) acknowledges and recognizes the importance and necessity of a clean and fair sport, including respect for the prohibition against doping and SKI CLASSICS requirement that all Pro Team members including the Athlete are clean, free from drugs and refrain from doping. The Athlete hereby truthfully declares and certifies the following to the Pro Team:

- The Athlete will not, while the Athlete is a member of the Pro Team nor has for 24 months prior, use/used any forms of illegal or prohibited substances, preparations or drugs (including any prohibited substances as defined under the relevant anti-doping rules and regulations); and comply with all applicable anti-doping rules, regulations, policies and legislation such as e.g. FIS and WADA Anti-Doping Rules.
- The Athlete acknowledges and accepts furthermore that the Athlete is liable for payment of a penalty amounting up to EURO 100,000 (the "Penalty") in case the Athlete has breached the Athlete Declaration, as compensation for all/part of the costs/losses that the Ski Classics or/and the Pro Team will or may incur due to the violation of the Athlete Declaration. The Penalty will be with 30 days due, to be paid by the Athlete.

**WAIVERS** I understand that there are inherent risks involved in my participation in Ski Classics competitions, including, but not limited to, those associated with weather or competition conditions, equipment, other participants, and spectators. I fully assume the risks associated with my participation in Ski Classics competitions or activities. To the fullest extent permitted by law, I waive any and all claims that I, my heirs or legal representatives may have against Ski Classics, the organisers of any Ski Classics competitions or activities, or any Ski Classics sponsor, or against any director, officer, employee, authorised agent or independent contractor of any of them for death or personal injury and/or any loss or damage that I incur during my participation in any Ski Classics competition or activity. I waive any claim for any costs or losses that I incur in relation to a Ski Classics competition or other activity that has to be cancelled for reasons of safety or force majeure (as determined by Ski Classics or competition organiser), including, but not limited to, travel and accommodation costs.

**INSURANCE** I understand and agree that I must possess both sufficient liability and accident insurance for myself covering accident, recovery, and transport costs, including for competition-related risks, to an adequate extent when participating in any Ski Classics competitions or activities.

**ELIGIBILITY** I understand that I will be eligible to compete in any Ski Classics competitions only once I have provided Ski Classics with properly completed and signed copy of this declaration.

**RIGHTS** I accept that Ski Classics has all rights to free of charge use videos and photos including me, alone or in group, for their own, their partners as well as all kinds of promotions usage, for all future.

**GDPR** I accept that Ski Classics may use my personal data.

**DATE AND PLACE**

**SIGNATURE OF LEGAL GUARDIAN IN CASE OF MINORS**

**PRO TEAM ATHLETE SIGNATURE**

**PRO TEAM DIRECTOR SIGNATURE**



**CHAMPION BIB**  
Yellow PMS neon 803



**SPRINT BIB**  
Green PMS neon 802



**YOUTH BIB**  
Pink PMS neon 806



**CLIMB BIB**  
Red PMS P 48-8 C  
Black PMS Black C



**VETERAN BIB**  
Pattern range from 10% to 100% black

## BAD GASTEIN PRO TEAM TEMPO & CRITERIUM

### Race administration

Ski Classics  
racedirector@skiclassics.com

### Waxing facilities

**Silvo Gstrein**  
silvo.gstrein@gastein.com +43 664 3485920

### Accommodation

**Silvo Gstrein**  
silvo.gstrein@gastein.com +43 664 3485920

## LA VENOSTA CRITERIUM & ITT

### Race administration

Evelin Thöni +39 0473 634 603  
evelin@reschenpass.it

### Accommodation

Evelin Thöni +39 0473 634 603  
evelin@reschenpass.it

## PUSTERTALER SKI MARATHON

### Race administration

Ski Classics  
racedirector@skiclassics.com

### Waxing facilities

info@ski-marathon.com

### Accommodation

info@ski-marathon.com

## ENGADIN LA DIAGONELA

### Race administration

Jan Bill +41 81 851 60 88  
info@ladiagonela.ch

### Waxing facilities

Mirjam Spierer +41 81 838 83 13  
mirjam.spierer@pontresina.ch

### Accommodation

Ruben Monteiro +41 81 830 08 49  
ruben.monteiro@engadin.ch

## MARCIALONGA

### Race administration

Francesca Volpati +39 0462 501 110  
info@marcialonga.it

### Accommodation

Booking Centre APT Val di Fiemme +39 0462 341 419  
booking@visitfiemme.it

## JIZERSKA

### Race administration

Michaela Visingerova  
info@jiz50.com

### Waxing facilities

info@jiz50.com

### Accommodation

info@jiz50.com

## GRÖNKLITT CLASSIC & ITT

### Race administration

Ski Classics  
racedirector@skiclassics.com

### Waxing facilities

Sören Sisell  
langdcentrum@orsagronklitt.se

### Accommodation

Booking centre Orsa Grönklitt +46 250 462 00

## VASALOPPET

### Race administration

Cathrine Mörk +46702546870  
cathrine.mork@vasaloppet.se

### Waxing facilities

N/A

### Accommodation

Cathrine Mörk +46702546870  
cathrine.mork@vasaloppet.se

## BIRKEBEINERRENNET

### Race administration

Anne Lise Borgundvåg +47 905 43 382  
anne.lise@birkeneiner.no

### Waxing facilities

info@birkebeinerrennet.no +47 417 72 900

### Accommodation

Berit Nordseth +47 954 68 709  
berit@birkebeiner.no

## REISTADLØPET & SUMMIT 2 SENJA

### Race administration

Leif-Ketil Gamst +47 488 96 802  
ceo@reistadlopet.no

### Waxing facilities

Leif-Ketil Gamst +47 488 96 802  
ceo@reistadlopet.no

### Accommodation

Leif-Ketil Gamst +47 488 96 802  
ceo@reistadlopet.no

## JANTELOPPET

### Race administration

Jevgenia Kirillova +47 403 04 001  
j.kirillova@thesiliconvalley.no

### Waxing facilities

Jevgenia Kirillova +47 403 04 001  
j.kirillova@thesiliconvalley.no

### Accommodation

Jevgenia Kirillova +47 403 04 001  
j.kirillova@thesiliconvalley.no

## APPENDIX 9 • PRIZE MONEY DISTRIBUTION

\*Preliminary event prize money - invoice details  
to be found in [Appendix 10](#)

### **BAD GASTEIN PRO TEAM TEMPO**

Invoice to Bad Gastein

#### **PRO TEAM**

1. EUR 5.000
2. EUR 3.000
3. EUR 2.000

### **BAD GASTEIN CRITERIUM**

Invoice to Bad Gastein

#### **WOMEN / MEN**

1. EUR 5.000
2. EUR 2.000
3. EUR 1.200
4. EUR 700
5. EUR 600
6. EUR 500

### **LA VENOSTA CRITERIUM**

Invoice to La Venosta

#### **WOMEN / MEN**

1. EUR 5.000
2. EUR 2.000
3. EUR 1.200
4. EUR 700
5. EUR 600
6. EUR 500

### **LA VENOSTA ITT**

Invoice to La Venosta

#### **WOMEN / MEN**

1. EUR 2.500
2. EUR 1.000
3. EUR 600
4. EUR 350
5. EUR 300
6. EUR 250

### **PUSTERTALER SKI MARATHON**

Invoice to Pustertal

#### **WOMEN / MEN**

1. EUR 5.000
2. EUR 2.000
3. EUR 1.200
4. EUR 700
5. EUR 600
6. EUR 500

### **ENGADIN LA DIAGONELA**

Invoice to La Diagonela

#### **WOMEN / MEN**

1. EUR 5.300
2. EUR 2.200
3. EUR 1.200
4. EUR 700
5. EUR 600
6. EUR 500

### **MARCIALONGA**

Invoice to Marcialonga

#### **WOMEN / MEN**

1. EUR 5.300
2. EUR 2.200
3. EUR 1.200
4. EUR 700
5. EUR 600
6. EUR 500

### **JIZERSKÁ 50**

Invoice to Jizerská 50

#### **WOMEN / MEN**

1. EUR 4.500
2. EUR 2.000
3. EUR 1.000
4. EUR 800
5. EUR 500
6. EUR 200

### **GRÖNKLITT CRITERIUM**

Invoice to Orsa Grönklitt

#### **WOMEN / MEN**

1. EUR 5.000
2. EUR 2.000
3. EUR 1.200
4. EUR 700
5. EUR 600
6. EUR 500

### **GRÖNKLITT ITT**

Invoice to Orsa Grönklitt

#### **WOMEN / MEN**

1. EUR 2.500
2. EUR 1.000
3. EUR 600
4. EUR 350
5. EUR 300
6. EUR 250

### **VASALOPPET**

Invoice to Vasaloppet

#### **WOMEN / MEN**

1. SEK 100.000
2. SEK 50.000
3. SEK 30.000
4. SEK 20.000
5. SEK 15.000
6. SEK 10.000
7. SEK 9.000
8. SEK 8.000
9. SEK 7.000
10. SEK 6.000
11. SEK 5.000
12. SEK 4.000
13. SEK 3.000
14. SEK 2.000
15. SEK 1.000

### **BIRKEBEINERRENNET**

Invoice to Birkebeinerrennet

#### **WOMEN / MEN**

1. NOK 70.000
2. NOK 40.000
3. NOK 20.000
4. NOK 10.000
5. NOK 6.000
6. NOK 4.000

### **REISTADLØPET**

Invoice to Reistadløpet

#### **WOMEN / MEN**

1. EUR 5.000
2. EUR 2.000
3. EUR 1.200
4. EUR 700
5. EUR 600
6. EUR 500

### **SUMMIT 2 SENJA**

Invoice to Reistadløpet

#### **WOMEN / MEN**

1. EUR 5.000
2. EUR 2.000
3. EUR 1.200
4. EUR 700
5. EUR 600
6. EUR 500

### **JANTELOPPET**

Invoice to Janteloppet

#### **WOMEN / MEN**

1. EUR 5.000
2. EUR 2.000
3. EUR 1.200
4. EUR 700
5. EUR 600
6. EUR 500

## SC LONG DISTANCE SKIING AB

### INVOICE ADDRESS

SC Long Distance Skiing AB  
Bruksgatan 36Z  
263 39 Höganäs  
Sweden  
VAT: SE556901904401

Electronic PDF invoices shall be sent to:  
invoices@skiclassics.com

### POST ADDRESS

SC Long Distance Skiing AB  
Bruksgatan 36Z  
263 39 Höganäs  
Sweden

### BAD GASTEIN PRO TEAM TEMPO & CRITERIUM

Kur- und Tourismusverband Bad Gastein  
Kaiser-Franz-Josef-Strasse 27  
5640 Bad Gastein  
Austria  
VAT: ATU37782100

### PUSTERTALER SKI MARATHON

OK Pustertaler Ski Marathon  
Via al Lago 16  
39034 Dobbiaco  
Italy

### LA VENOSTA CRITERIUM & ITT

Ferienregion Reschenpass  
Hauptstrasse 22  
39027 Reschen  
IT 00746300219  
VAT: IT00746300219

Invoice can be emailed to info@lavenosta.com

### ENGADIN LA DIAGONELA

Verein La Diagonela  
Quadratscha 18  
7503 Samedan  
Switzerland  
VAT: CHE498557848

Invoice can be emailed to: info@ladiagonela.ch

### MARCIALONGA

SCI CLUB MARCIALONGA  
Località Stalimen, 4  
38037 Predazzo TN  
VAT 01605290228

Invoice can be emailed to: sara@marcialonga.it

### JIZERSKA PADESATKA

Ski Klub Jizerska Padesatka z.s.  
Jablonecka 562/21  
Liberec I-Stare Mesto  
460 01 Liberec  
Czech Republic  
Company ID must be stated on the invoice "Company ID: 41324471"

### GRÖNKLITT CRITERIUM & ITT

Grönklittsgruppen AB  
Box 133  
794 22 Orsa  
Sweden

### VASALOPPET

Vasaloppsföreningen Sälen-Mora  
EANMOT: 7368844015882  
Box 171  
831 22 Östersund  
Sweden  
Mark the invoice "Tommy Höglund"

### BIRKEBEINERRENNET

Birken AS  
Fabrikkveien 2  
2450 Rena  
Norway  
VAT: NO912889912

### REISTADLØPET & SUMMIT 2 SENJA

Invoices shall be sent in PDF to:  
reistadloepet.as@mg.regnskap.snn.no

Reistadløpet AS  
Ole Reistads vei 116  
9325 Bardufoss  
Norway  
VAT: NO917388555

### JANTELOPPET

Janteløppet AS  
Kongleveien 40  
0860 OSLO  
VAT: NO930338613

Invoice can be mailed to: TBC

## QCI - QUOTA COUNTRY INDEX

QCI are calculated from following parameters:

- Pro Team nationalities
- Pro Athletes nationalities
- Ski Classics overall prize money
- Event prize money
- Top 50 places
- Podium places
- Total points in Champion, Sprint and Climb competitions

Countries with QCI less than 10% are considered emerging.  
 Countries with QCI higher than 10% are considered established.

### QUOTA COUNTRY INDEX FOR SEASON XV

NORWAY	46,74%
SWEDEN	31,59%
FINLAND	5,44%
CZECH REPUBLIC	3,85%
ITALY	2,99%
GERMANY	2,23%
FRANCE	1,62%
SWITZERLAND	1,31%
ESTONIA	0,96%
USA	0,75%
AUSTRIA	0,69%
DENMARK	0,64%
GREAT BRITAIN	0,43%
AUSTRALIA	0,32%
TAIWAN	0,13%
IRELAND	0,11%
SPAIN	0,09%
SLOVENIA	0,05%
CHINA	0,04%
ICELAND	0,02%
NETHERLANDS	0,01%
OTHER	0,00%